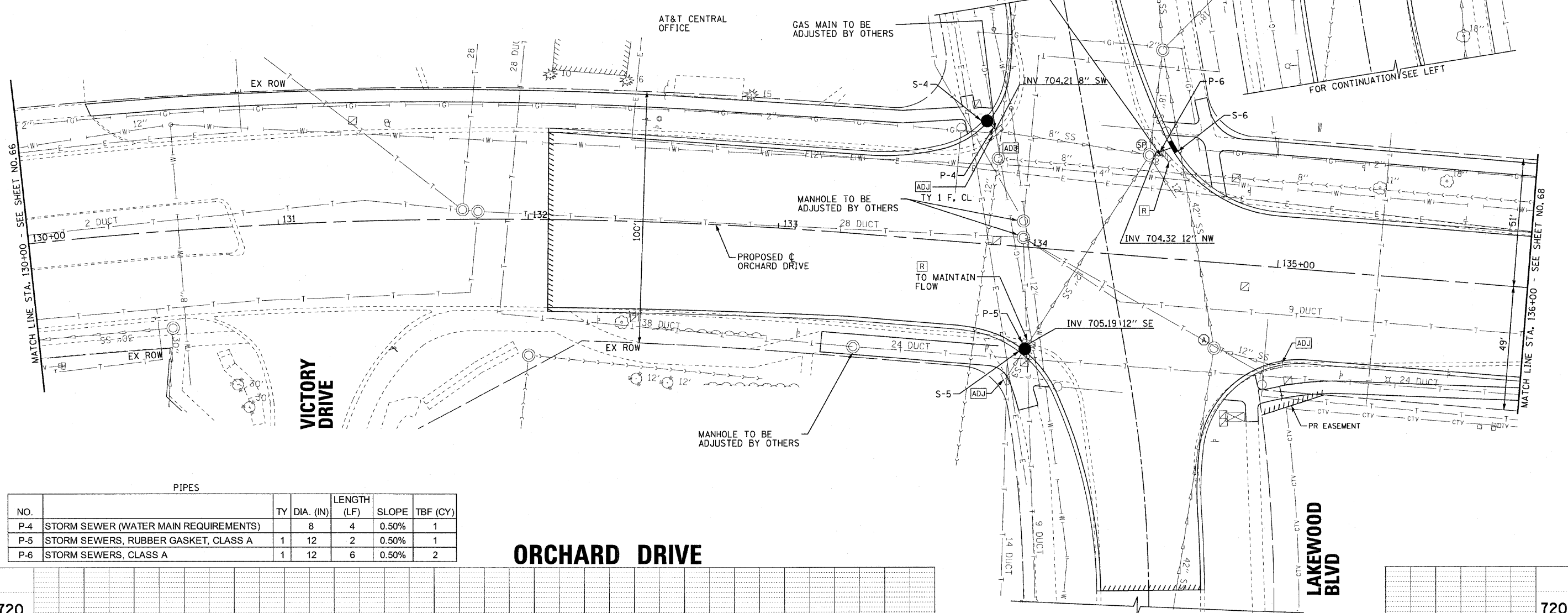
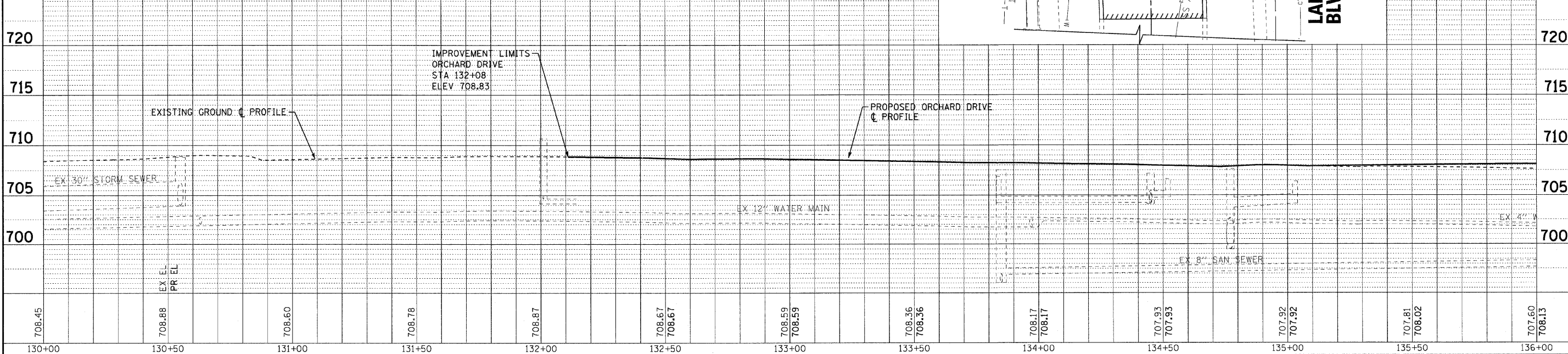


STORM STRUCTURES							
LABEL	STATION	OFFSET (FT)	TYPE	FRAME	ELEVATION	RIM/EP	INVERT
S-4	133+80	49.0	LT CATCH BASIN, TYPE C	T-1 F O.L.	706.78	EP	704.23 8"NE
S-5	134+02	40.0	RT CATCH BASIN, TYPE C	T-1 F O.L.	707.35	EP	705.20 12"W; 705.54 12"SE(ex)
S-6	134+54	44.0	LT INLET, TYPE A	T-11V F&G	707.05	EP	704.35 12"SE



PIPES						
NO.	TY	DIA. (IN)	LENGTH (LF)	SLOPE	TBF (CY)	
P-4	STORM SEWER (WATER MAIN REQUIREMENTS)	8	4	0.50%	1	
P-5	STORM SEWERS, RUBBER GASKET, CLASS A	12	2	0.50%	1	
P-6	STORM SEWERS, CLASS A	12	6	0.50%	2	

ORCHARD DRIVE



COPYRIGHT © 2011 BY BAXTER & WOODMAN, INC.
 STATE OF ILLINOIS - PROFESSIONAL DESIGN FIRM
 LICENSE NO. - 86-007208
 PROJECT NO. - 06-0090-00-FP
 DATE - 10/24/11
 FILE - 060670-PH2-DU7.shp

	DESIGNED - AMM	REVISED -	STATE OF ILLINOIS ORCHARD DRIVE IMPROVEMENTS	DRAINAGE AND UTILITY ORCHARD DRIVE	F.A.U. RTE. 2836	SECTION 06-0090-00-FP	COUNTY COOK	TOTAL SHEETS 200	SHEET NO. 67
	DRAWN - MAC	REVISED -			FED. ROAD DIST. NO. 1	ILLINOIS FED. AID PROJECT	M-8003(66d)		
CHECKED - TAO	REVISED -	DATE - 10/24/11	FILE - 060670-PH2-DU7.shp	SCALE: HORIZ. 1"=20' / VERT. 1"=5'	STA. 130+00 TO STA. 136+00	CONTRACT NO. 63635			