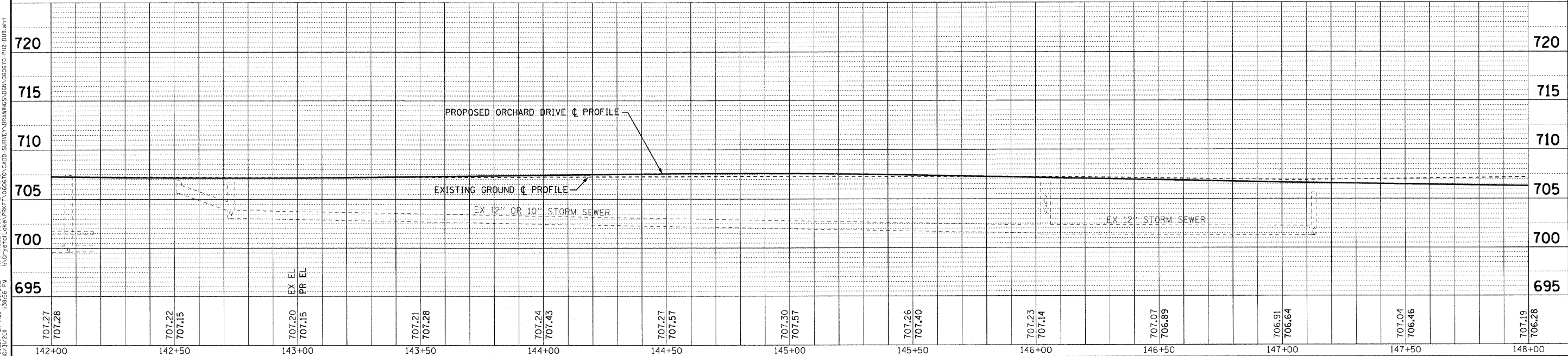


PIPES						
NO.	TY	DIA. (IN)	LENGTH (LF)	SLOPE	TBF (CY)	
P-9	STORM SEWERS, CLASS A	10	6	0.50%	2	

STORM STRUCTURES							
LABEL	STATION	OFFSET (FT)	TYPE	FRAME	ELEVATION	RIM/EP	INVERT
S-10A	143+30	20.5	LT INLET, TYPE A	T-11V F&G	706.42	EP	704.07 12"W
S-11	146+00	20.5	LT CATCH BASIN, TYPE C	T-11V F&G	708.74	EP	704.50 10"NW

ORCHARD DRIVE



DESIGNED - AMM	REVISED -
DRAWN - UKB	REVISED -
CHECKED - TAG	REVISED -
DATE - 10/24/11	FILE - 060670-PH2-DU9.sh+

STATE OF ILLINOIS ORCHARD DRIVE IMPROVEMENTS

DRAINAGE AND UTILITY ORCHARD DRIVE

SCALE: HORIZ. 1"=20' / VERT. 1"=5'	STA. 142+00 TO STA. 148+00	F.A.U. RTE. 2836	SECTION 06-00090-00-FP	COUNTY COOK	TOTAL SHEETS 200	SHEET NO. 69	CONTRACT NO. 63635
------------------------------------	----------------------------	------------------	------------------------	-------------	------------------	--------------	--------------------

COPYRIGHT © 2011 BY BAXTER & WOODMAN, INC.
 STATE OF ILLINOIS - PROFESSIONAL DESIGN FIRM
 LICENSE NO. - BR/0074381
 PROJECT NO. - 060670-PH2-DU9.sh+