

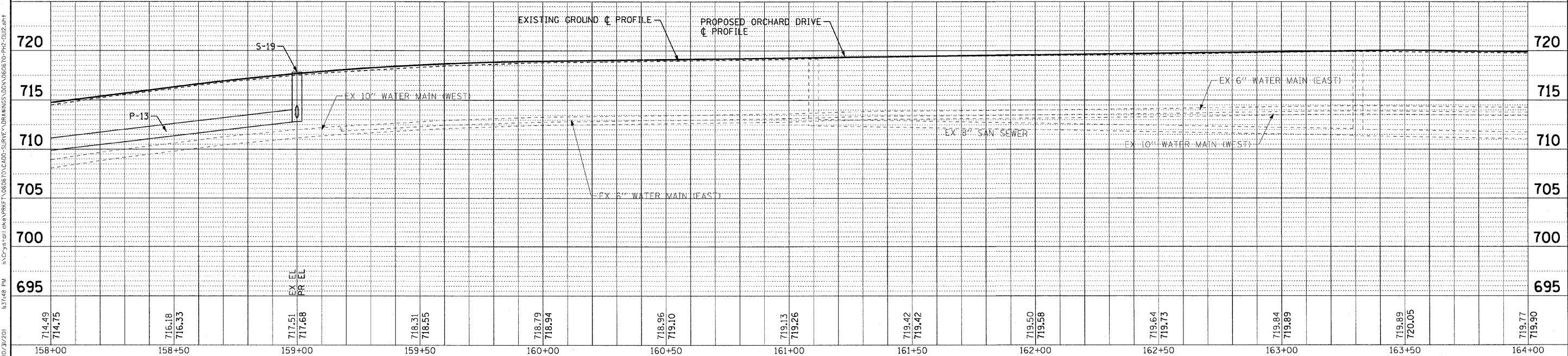
STORM STRUCTURES

LABEL	STATION	OFFSET (FT)	TYPE	FRAME	ELEVATION	RIM/EP	INVERT
S-19	159+00	28.0	RT	MANHOLE, TYPE A, 4' DIA.	T-1 F. C.L.	718.00	RIM 713.00 15'SW; 713.35 15'W
S-20	159+00	18.0	RT	CATCH BASIN, TYPE A, 4' DIA.	T-11V F&G	717.32	EP 713.99 12'W; 713.50 15'E
S-21	159+00	18.0	LT	INLET, TYPE A	T-11V F&G	717.32	EP 714.15 12'E

PIPES

NO.	TY	DIA. (IN)	LENGTH (LF)	SLOPE	TBF (CY)
P-13	STORM SEWERS, CLASS A	2	15	155	2.71% 0
P-14	STORM SEWERS, CLASS A	1	15	8	1.87% 2
P-15	STORM SEWERS, CLASS A	1	12	36	0.44% 10

### ORCHARD DRIVE



DESIGNED - AMM	REVISED -
DRAWN - UKB	REVISED -
CHECKED - TAO	REVISED -
DATE - 10/24/11	FILE - 060670-PH2-DU12.sht

STATE OF ILLINOIS  
ORCHARD DRIVE IMPROVEMENTS

DRAINAGE AND UTILITY  
ORCHARD DRIVE

F.A.U. RTE. 2836	SECTION 06-00090-00-FP	COUNTY COOK	TOTAL SHEETS 200	SHEET NO. 72
SCALE: HORIZ. 1"=20' / VERT. 1"=5'		STA. 158+00 TO STA. 164+00		CONTRACT NO. 63635
FED. ROAD DIST. NO. 1 ILLINOIS FED. AID PROJECT M-8003661				

COPYRIGHT © 2011 BY BAXTER & WOODMAN, INC.  
 STATE OF ILLINOIS - PROFESSIONAL DESIGN FIRM  
 265 S. WASHINGTON ST., CHICAGO, IL 60601  
 312.467.1000  
 10/27/2011 11:07:51 AM  
 \\baxter\server\pdr22834\pdr\060670\CADD\SURVEY\DRAWINGS\060670-060670-PH2-DU12.dwg