

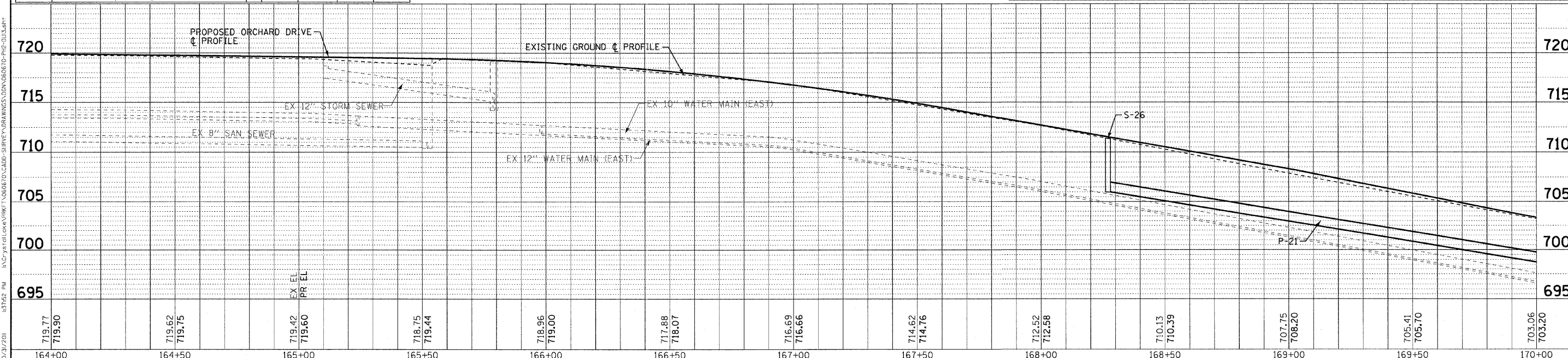
PIPES

NO.	TYPE	DIA. (IN)	LENGTH (LF)	SLOPE	TBF (CY)
P-16	STORM SEWER (WATER MAIN REQUIREMENTS)	12	66	1.02%	20
P-17	STORM SEWER (WATER MAIN REQUIREMENTS)	10	55	0.49%	10
P-18	STORM SEWER (WATER MAIN REQUIREMENTS)	10	19	0.53%	4
P-18A	STORM SEWER (WATER MAIN REQUIREMENTS)	12	22	2.18%	7
P-19	STORM SEWERS, CLASS A, TYPE	1	12	20	1.50%
P-20	STORM SEWERS, CLASS A, TYPE	1	12	20	1.50%
P-21	STORM SEWERS, CLASS A, TYPE	1	12	250	5.00%

STORM STRUCTURES

LABEL	STATION	OFFSET (FT)	TYPE	FRAME	ELEVATION	RIM/EP	INVERT
S-22	165+14	33.7	RT INLET, TYPE A	T-1 F, O.L.	718.88	EP	715.70 12"N
S-23	165+16	36.5	LT INLET, TYPE A	T-1 F, O.L.	718.82	EP	716.60 10"N
S-23A	165+71	38.3	LT MANHOLE, TYPE A, 4' DIA.	T-1 F, C.L.	719.03	RIM	716.33 10"N.S; 716.33 10"E(ex)
S-24	165+90	37.5	LT INLET, TYPE A	T-1 F, O.L.	718.90	EP	716.43 10"S
S-24A	166+00	32.5	RT INLET, TYPE A	T-1 F, O.L.	718.68	EP	715.51 12"S
S-25	168+27	20.5	RT CATCH BASIN, TYPE A, 4' DIA.	T-11V F&G	711.00	EP	708.50 12"W
S-26	168+27	0.5	RT MANHOLE, TYPE A, 4' DIA.	T-1 F, C.L.	711.40	RIM	708.00 12"
S-27	168+27	20.5	LT CATCH BASIN, TYPE A, 4' DIA.	T-11V F&G	711.00	EP	708.50 12"E

### ORCHARD DRIVE



	DESIGNED - AMM DRAWN - UKB CHECKED - TAO DATE - 10/24/11	REVISED - REVISED - REVISED - FILE - 060670-PH2-DUI3.sht	<b>STATE OF ILLINOIS</b> <b>ORCHARD DRIVE IMPROVEMENTS</b>	<b>DRAINAGE AND UTILITY</b> <b>ORCHARD DRIVE</b>	F.A.U. RTE. 2836 SECTION 06-00090-00-FP COUNTY COOK TOTAL SHEETS 200 SHEET NO. 73 CONTRACT NO. 63635 M-80036611
--	---	---	---	---	---

SCALE: HORIZ. 1"=20' HORIZ. / 1"=5' VERT. STA. 164+00 TO STA. 170+00

COPYRIGHT © 2011 BY BAXTER & WOODMAN, INC.  
 STATE OF ILLINOIS - PROFESSIONAL DESIGN FIRM  
 2630 S. WOODSTOCK AVE., SUITE 100, CHICAGO, IL 60608  
 TEL: (773) 233-1200 FAX: (773) 233-1201  
 PROJECT: 060670-PH2-DUI3.sht