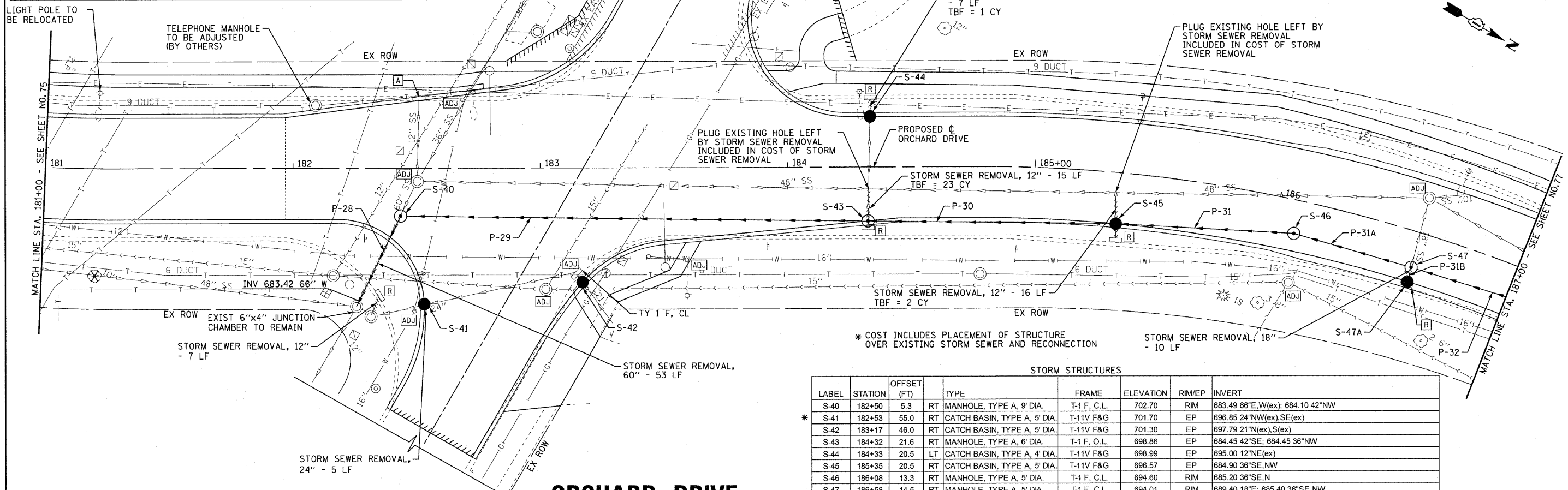
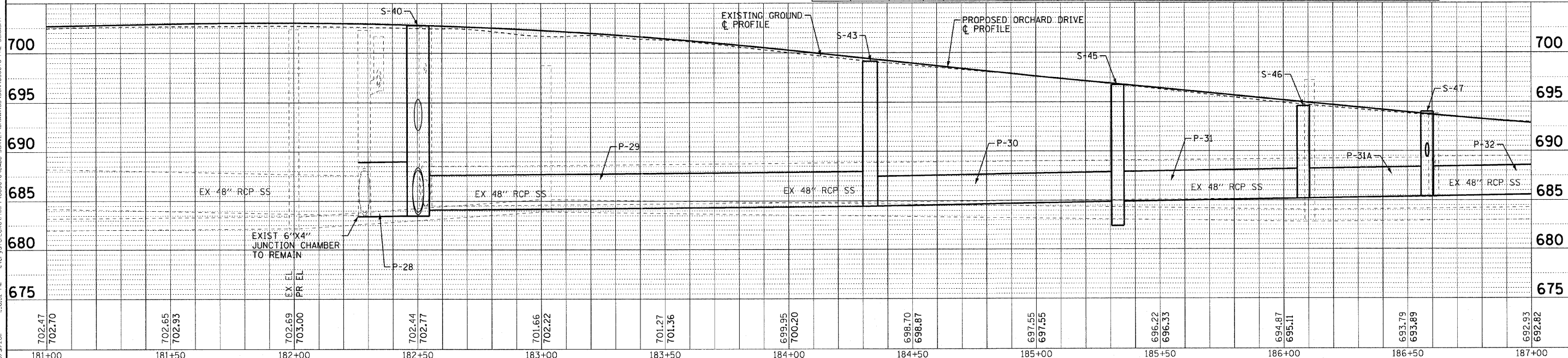


PIPES						
NO.		TY	DIA. (IN)	LENGTH (LF)	SLOPE	TBF (CY)
P-28	STORM SEWERS, CLASS A	3	66	39	0.18%	155
P-29	STORM SEWERS, CLASS A	3	42	189	0.19%	704
P-30	STORM SEWERS, CLASS A	2	36	100	0.45%	265
P-31	STORM SEWERS, CLASS A	2	36	72	0.42%	148
P-31A	STORM SEWERS, CLASS A	2	36	48	0.42%	80
P-31B	STORM SEWERS, RUBBER GASKET, CLASS A	1	18	6	1.67%	3
P-32	STORM SEWERS, CLASS A	2	36	50	0.40%	71



STORM STRUCTURES							
LABEL	STATION	OFFSET (FT)	TYPE	FRAME	ELEVATION	RIM/EP	INVERT
S-40	182+50	5.3	RT	MANHOLE, TYPE A, 9' DIA.	T-1 F, C.L.	702.70	RIM 683.49 66°E, W(ex); 684.10 42°NW
S-41	182+53	55.0	RT	CATCH BASIN, TYPE A, 5' DIA.	T-11V F&G	701.70	EP 696.85 24°NW(ex), SE(ex)
S-42	183+17	46.0	RT	CATCH BASIN, TYPE A, 5' DIA.	T-11V F&G	701.30	EP 697.79 21°N(ex), S(ex)
S-43	184+32	21.6	RT	MANHOLE, TYPE A, 6' DIA.	T-1 F, O.L.	698.86	EP 684.45 42°SE; 684.45 38°NW
S-44	184+33	20.5	LT	CATCH BASIN, TYPE A, 4' DIA.	T-11V F&G	698.99	EP 695.00 12°NE(ex)
S-45	185+35	20.5	RT	CATCH BASIN, TYPE A, 5' DIA.	T-11V F&G	696.57	EP 684.90 36°SE, NW
S-46	186+08	13.3	RT	MANHOLE, TYPE A, 5' DIA.	T-1 F, C.L.	694.60	RIM 685.20 36°SE, N
S-47	186+58	14.5	RT	MANHOLE, TYPE A, 5' DIA.	T-1 F, C.L.	694.01	RIM 689.40 18°E; 685.40 36°SE, NW
S-47A	186+58	20.5	RT	CATCH BASIN, TYPE A, 4' DIA.	T-24 F&G	693.30	EP 689.50 18° W



Copyright © 2011 by BAXTER & WOODMAN INC.
STATE OF ILLINOIS - PROFESSIONAL DESIGN FIRM
WOODMAN ENGINEERS
CONTRACT NO. 2836
DATE: 10/24/11



DESIGNED -	AMM	REVISED -	
DRAWN -	UKB	REVISED -	
CHECKED -	TAO	REVISED -	
DATE -	10/24/11	FILE -	060670-PH2-DU16.sht

STATE OF ILLINOIS
ORCHARD DRIVE IMPROVEMENTS

DRAINAGE AND UTILITY
ORCHARD DRIVE

SCALE: HORIZ. 1"=20' / VERT. 1"=5'

STA. 181+00 TO STA. 187+00

F.A.U. RTE.	SECTION	COUNTY	TOTAL SHEETS	SHEET NO.
2836	06-00090-00-FP	COOK	200	76
CONTRACT NO. 63635				
FED. ROAD DIST. NO. 1 ILLINOIS FED. AID PROJECT M-80031661				