

PIPES

NO.	TY	DIA. (IN)	LENGTH (LF)	SLOPE	TBF (CY)
P-60	STORM SEWERS, RUBBER GASKET, CLASS A	12	41	0.49%	13
P-61	STORM SEWERS, CLASS A	12	10	2.00%	2
P-62	STORM SEWERS, CLASS A	42	84	0.64%	49
P-63	STORM SEWERS, RUBBER GASKET, CLASS A	12	41	0.49%	12
P-64	STORM SEWERS, CLASS A	12	12	1.67%	3
P-65	STORM SEWERS, CLASS A	38x60	120	0.22%	52
P-66	STORM SEWERS, RUBBER GASKET, CLASS A	12	41	0.49%	12
P-67	STORM SEWERS, CLASS A	12	13	1.54%	2
P-68	STORM SEWERS, CLASS A	38x60	123	1.16%	34

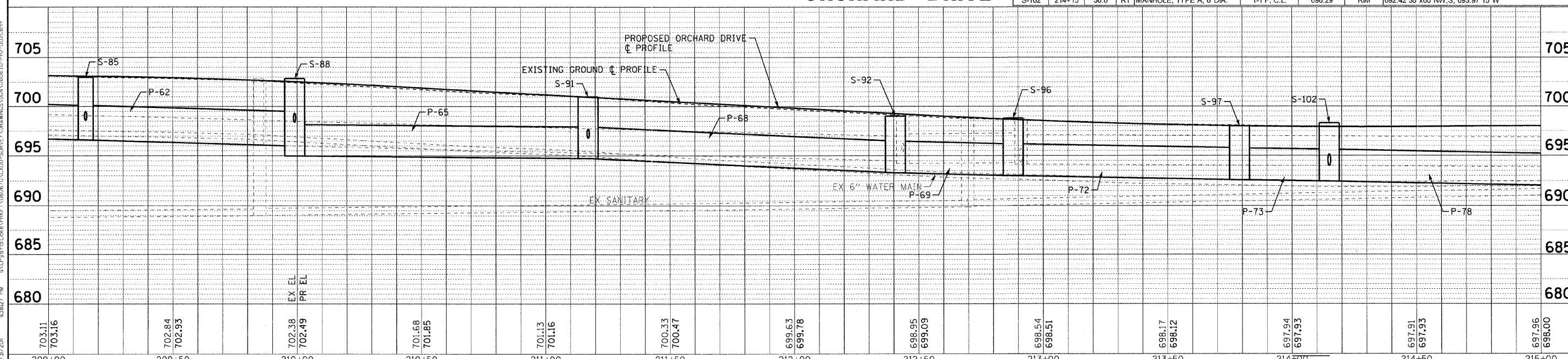
PIPES (CONT)

NO.	TY	DIA. (IN)	LENGTH (LF)	SLOPE	TBF (CY)
P-69	STORM SEWERS, CLASS A	38x60	48	0.62%	44
P-70	STORM SEWERS, CLASS A	12	24	0.83%	7
P-71	STORM SEWERS, CLASS A	12	12	0.42%	4
P-72	STORM SEWERS, CLASS A	38x60	90	0.46%	0
P-73	STORM SEWERS, CLASS A	38x60	35	0.49%	35
P-74	STORM SEWER (WATER MAIN REQUIREMENTS)	12	9	0.44%	3
P-75	STORM SEWERS, RUBBER GASKET, CLASS A	15	48	0.35%	15
P-76	STORM SEWERS, CLASS A	12	9	0.87%	3
P-77	STORM SEWERS, CLASS A	15	13	0.54%	3
P-78	STORM SEWERS, CLASS A	38x60	90	0.47%	100

\* COST INCLUDES PLACEMENT OF STRUCTURE OVER EXISTING STORM SEWER AND RECONNECTION

STORM STRUCTURES									
LABEL	STATION	OFFSET (FT)	TYPE	FRAME	ELEVATION	RIM/EP	INVERT		
S-83	209+15	20.5	LT INLET, TYPE A	T-11V F&G	702.59	EP	699.00 12"E		
S-84	209+15	20.5	RT CATCH BASIN, TYPE A, 4' DIA.	T-11V F&G	702.59	EP	698.80 12"E,W		
S-85	209+15	29.7	RT MANHOLE, TYPE A, 6' DIA.	T-1 F, C.L.	703.00	RIM	696.66 42"N,S; 698.60 12"W		
S-86	209+90	20.5	LT INLET, TYPE A	T-11V F&G	702.09	EP	698.80 12"E		
S-87	210+00	20.5	RT CATCH BASIN, TYPE A, 4' DIA.	T-11V F&G	702.09	EP	698.60 12"E,W		
S-88	210+00	34.0	RT MANHOLE, TYPE A, 8' DIA.	T-1 F, C.L.	702.87	RIM	696.12 42"S; 695.00 38"x60"N; 698.40 12"W		
S-89	211+17	20.5	LT INLET, TYPE A	T-11V F&G	700.49	EP	697.20 12"E		
S-90	211+17	20.5	RT CATCH BASIN, TYPE A, 4' DIA.	T-11V F&G	700.49	EP	697.00 12"E,W		
S-91	211+17	34.0	RT MANHOLE, TYPE A, 8' DIA.	T-1 F, C.L.	701.00	RIM	694.73 38"x60"N,S; 696.80 12"W		
S-92	212+40	33.9	RT MANHOLE, TYPE A, 8' DIA.	T-1 F, C.L.	699.01	RIM	693.30 38"x60"N,S; 695.36 21"E(ex)		
S-93	212+67	38.0	LT INLET, TYPE A	T-11V F&G	698.20	EP	695.10 12"NW		
S-94	212+90	40.0	LT MANHOLE, TYPE A, 4' DIA.	T-1 F, C.L.	698.00	RIM	694.00 18"E(ex),W(ex); 694.90 12"SE; 694.60 12"NE		
S-95	213+07	34.5	LT INLET, TYPE A	T-11V F&G	697.83	EP	694.65 12"SW		
S-95A	212+88	20.5	RT CATCH BASIN, TYPE A, 4' DIA.	T-11V F&G	698.29	EP	694.45 18"E(ex),W(ex)		
S-96	212+88	36.0	RT MANHOLE, TYPE A, 8' DIA.	T-1 F, C.L.	698.79	RIM	693.00 38"x60"NW,SE; 694.34 18"SW(ex)		
S-97	213+79	38.3	RT MANHOLE, TYPE A, 8' DIA.	T-1 F, C.L.	698.00	RIM	692.59 38"x60"NE		
S-98	214+15	24.0	LT CATCH BASIN, TYPE A, 4' DIA.	T-24 F&G	697.62	EP	694.46 12"NW; 694.21 15"NE		
S-99	214+25	24.0	LT INLET, TYPE A	T-24 F&G	697.62	EP	694.50 12"SE		
S-100	214+15	23.0	RT CATCH BASIN, TYPE A, 4' DIA.	T-24 F&G	697.64	EP	694.29 12"NW; 694.04 15"SW,NE		
S-101	214+25	23.0	RT INLET, TYPE A	T-24 F&G	697.64	EP	694.35 12"SE		
S-102	214+15	36.0	RT MANHOLE, TYPE A, 8' DIA.	T-1 F, C.L.	698.29	RIM	692.42 38"x60"NW,S; 693.97 15"W		

ORCHARD DRIVE



COPYRIGHT © 2011 BY BAXTER L. WOODMAN, INC. PROJECT NO. 060670-PH2-DU21-11  
 LICENSE NO. 06-00021-EXPIRES 4/30/2013  
 10/21/2011 13:22:27 PM

	DESIGNED - AMM	REVISED -	<b>STATE OF ILLINOIS</b> <b>ORCHARD DRIVE IMPROVEMENTS</b>	<b>DRAINAGE AND UTILITY</b> <b>ORCHARD DRIVE</b>		F.A.U. RTE. 2836	SECTION 06-00090-00-FP	COUNTY COOK	TOTAL SHEETS 200	SHEET NO. 81
	DRAWN - UKB	REVISED -		SCALE: HORIZ. 1"=20' / VERT. 1"=5'	STA. 209+00 TO STA. 215+00	FED. ROAD DIST. NO. 1 ILLINOIS	FED. AID PROJECT	CONTRACT NO. 63635	W-80031661	
	CHECKED - TAO	REVISED -	FILE - 060670-PH2-DU21.sht							
	DATE - 10/24/11									