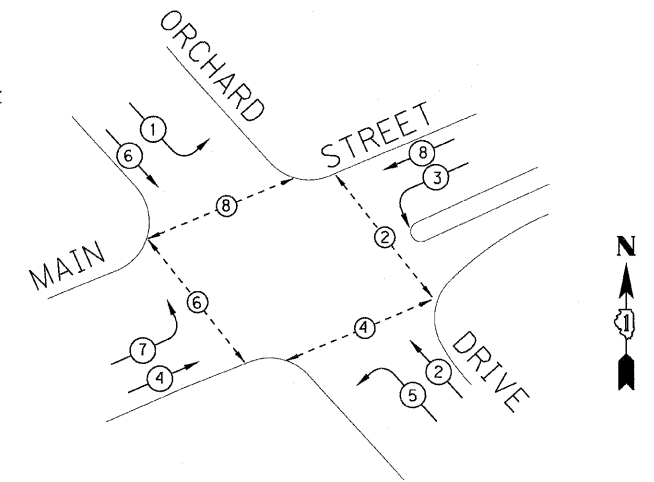
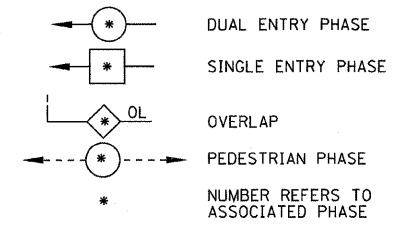
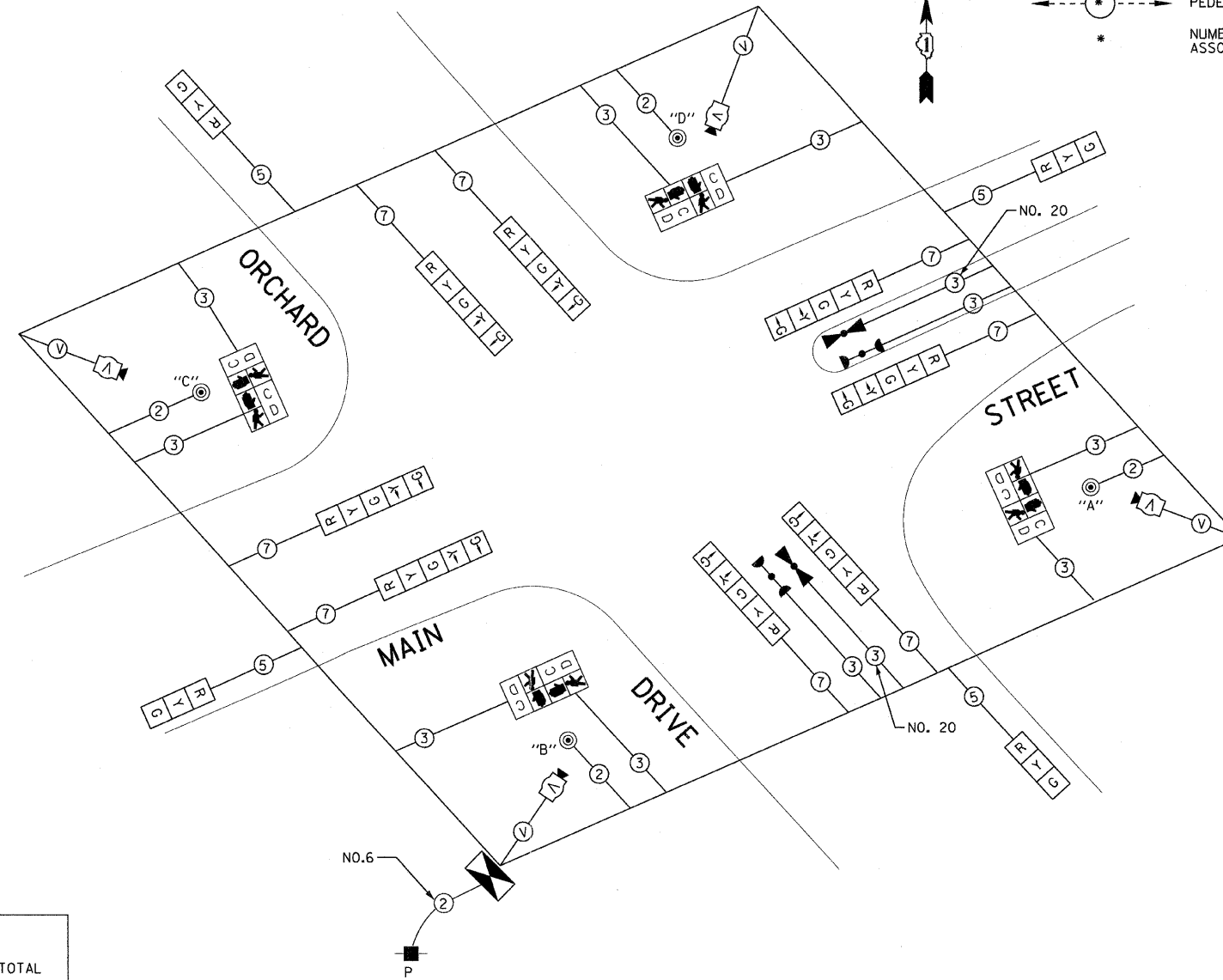


TEMPORARY CONTROLLER SEQUENCE

LEGEND



TEMPORARY PHASE DESIGNATION DIAGRAM



TEMPORARY CABLE PLAN

(NOT TO SCALE)

NOTE:
 PUSH BUTTON "A" SHALL PLACE A CALL IN PHASES 2 AND 4
 PUSH BUTTON "B" SHALL PLACE A CALL IN PHASES 4 AND 6
 PUSH BUTTON "C" SHALL PLACE A CALL IN PHASES 6 AND 8
 PUSH BUTTON "D" SHALL PLACE A CALL IN PHASES 2 AND 8

TEMPORARY EMERGENCY VEHICLE PREEMPTORS	
EMERGENCY VEHICLE PREEMPTOR	3 4
MOVEMENT	

TEMPORARY EMERGENCY VEHICLE PREEMPTION SEQUENCE

I.D.O.T TRAFFIC SIGNAL INSTALLATION ELECTRICAL SERVICE REQUIREMENTS					TOTAL WATTAGE
TYPE	NO. LAMPS	WATTAGE		%OPERATION	
		INCAND.	LED		
SIGNAL (RED)	12		17	0.50	102.00
(YELLOW)	12		25	0.25	75.00
(GREEN)	12		15	0.25	45.00
ARROW	16		12	0.10	19.2
PED. SIGNAL	8		25	1.00	200
CONTROLLER	1	100		1.00	100.00
ILLUM. SIGN	0		90	0.50	0
VIDEO DET.	1		150	1.00	150.00
LUMINAIRE	0		250	0.50	0
FLASHER				0.50	-
TOTAL =					691.20

ENERGY COSTS TO:
 VILLAGE OF PARK FOREST
 350 VICTORY DRIVE
 PARK FOREST, IL 60466
 ENERGY SUPPLY CONTACT: VALERIE MURPHY
 PHONE: (708)235-2346
 COMPANY: COM ED



DESIGNED - JJF	REVISED -
DRAWN - MAC	REVISED -
CHECKED - TAO	REVISED -
DATE - 8-29-11	FILE - 060670-PH2-TS-TEMP-CABLE

STATE OF ILLINOIS
 ORCHARD DRIVE IMPROVEMENTS

TEMPORARY TRAFFIC SIGNAL CABLE PLAN
 AND PHASE DESIGNATION DIAGRAM
 ORCHARD DR AND MAIN STREET

F.A.U. RTE.	SECTION	COUNTY	TOTAL SHEETS	SHEET NO.
2836	06-00090-00-FP	COOK	200	114
FED. ROAD DIST. NO. 1 ILLINOIS FED. AID PROJECT			CONTRACT NO. 63635	
			M-80031661	

SCALE: NONE

STA. TO STA.

DESIGNED BY: BAXTER WOODMAN, INC.
 DRAWN BY: JEFFREY J. FURBER
 CHECKED BY: TERRY A. O'NEILL
 DATE: 8/29/11
 PROJECT: PHASE 2 IMPROVEMENTS TO PH2-REV 4/11
 DRAWING: 060670-PH2-TS-TEMP-CABLE-114444
 SCALE: AS SHOWN
 SHEET: 114 OF 200