

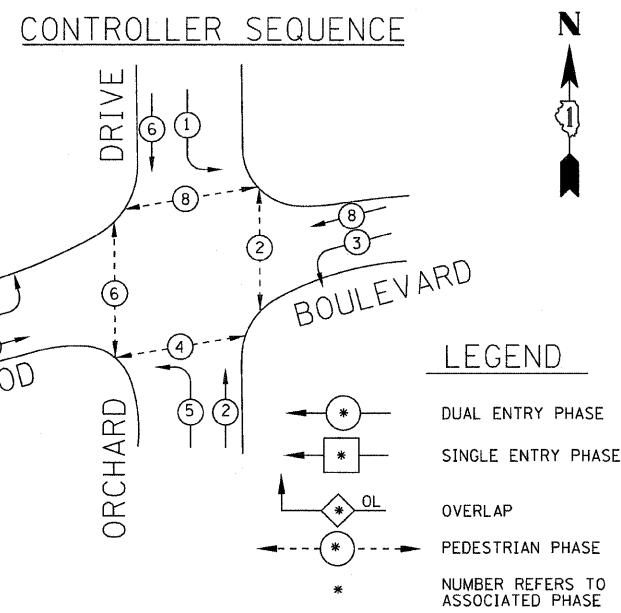
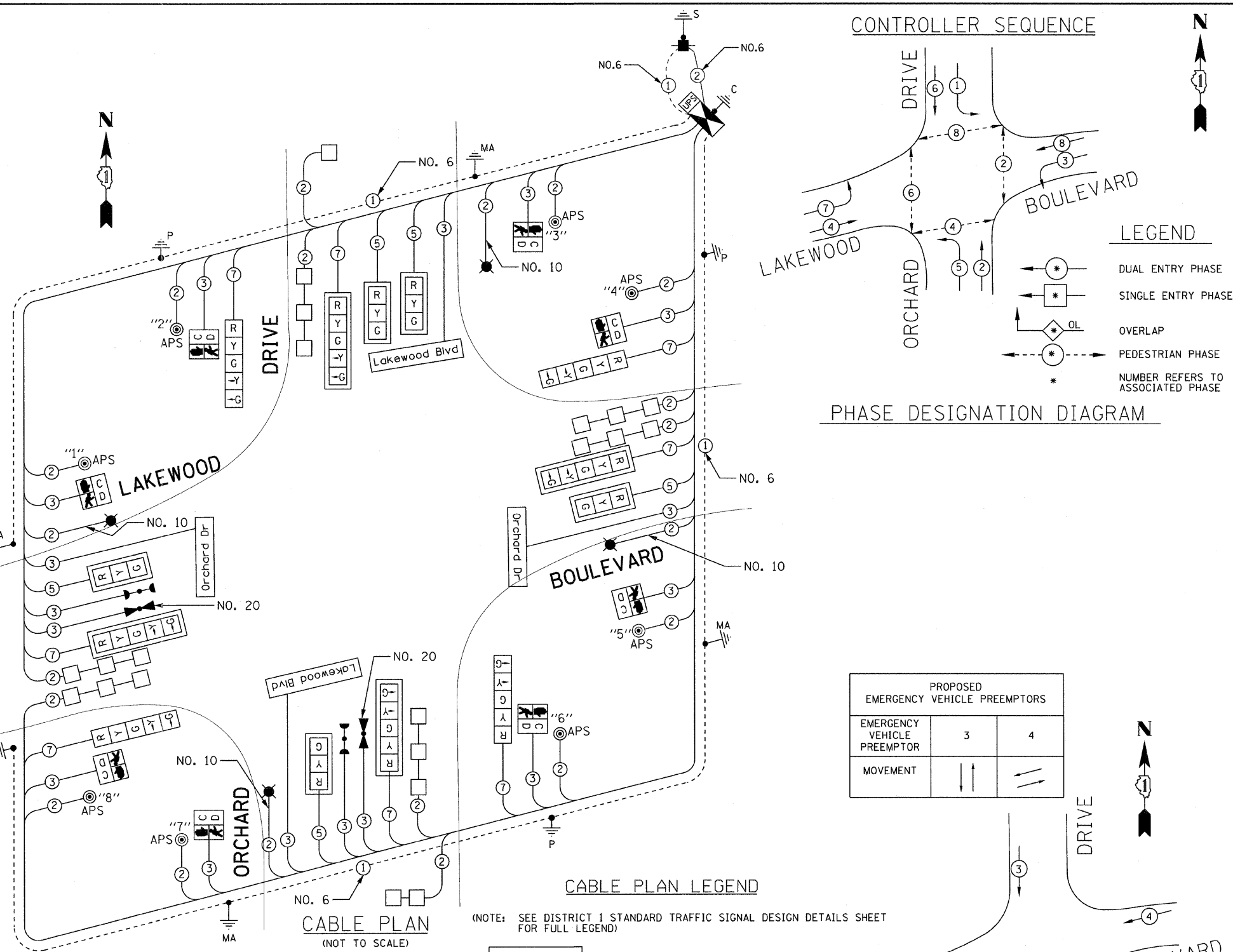
SCHEDULE OF QUANTITIES

80500020 SERVICE INSTALLATION - POLE MOUNTED	EACH	1
81028200 UNDERGROUND CONDUIT, GALVANIZED STEEL, 2" DIA.	FOOT	793
81028210 UNDERGROUND CONDUIT, GALVANIZED STEEL, 2 1/2" DIA.	FOOT	63
81028220 UNDERGROUND CONDUIT, GALVANIZED STEEL, 3" DIA.	FOOT	72
81028240 UNDERGROUND CONDUIT, GALVANIZED STEEL, 4" DIA.	FOOT	320
81400100 HANDHOLE	EACH	4
81400200 HEAVY-DUTY HANDHOLE	EACH	4
81400300 DOUBLE HANDHOLE	EACH	2
81700215 ELECTRIC CABLE IN CONDUIT, 600V (EPR-TYPE RHW) 2-1/C NO. 10	FOOT	730
82102250 LUMINAIRE, SODIUM VAPOR, HORIZONTAL MOUNT, 250 WATT	EACH	4
85700200 FULL-ACTUATED CONTROLLER AND TYPE IV CABINET	EACH	1
86200300 UNINTERRUPTIBLE POWER SUPPLY, EXTENDED	EACH	1
87301215 ELECTRIC CABLE IN CONDUIT, SIGNAL, NO. 14 2C	FOOT	2347
87301225 ELECTRIC CABLE IN CONDUIT, SIGNAL, NO. 14 3C	FOOT	1873
87301245 ELECTRIC CABLE IN CONDUIT, SIGNAL, NO. 14 5C	FOOT	783
87301255 ELECTRIC CABLE IN CONDUIT, SIGNAL, NO. 14 7C	FOOT	1075
87301305 ELECTRIC CABLE IN CONDUIT, LEAD-IN, NO. 14 1 PAIR	FOOT	1434
87301805 ELECTRIC CABLE IN CONDUIT, SERVICE, NO. 6 2 C	FOOT	125
87301900 ELECTRIC CABLE IN CONDUIT, EQUIPMENT GROUNDING CONDUCTOR, NO. 6 1C	FOOT	483
87502500 TRAFFIC SIGNAL POST, GALVANIZED STEEL 16 FT.	EACH	4
87702890 STEEL COMBINATION MAST ARM ASSEMBLY AND POLE 32 FT.	EACH	1
87702900 STEEL COMBINATION MAST ARM ASSEMBLY AND POLE 34 FT.	EACH	1
87702930 STEEL COMBINATION MAST ARM ASSEMBLY AND POLE 40 FT.	EACH	1
87702950 STEEL COMBINATION MAST ARM ASSEMBLY AND POLE 44 FT.	EACH	1
87800100 CONCRETE FOUNDATION, TYPE A	FOOT	16
87800150 CONCRETE FOUNDATION, TYPE C	FOOT	4
87800400 CONCRETE FOUNDATION, TYPE E 30-INCH DIAMETER	FOOT	27
87800415 CONCRETE FOUNDATION, TYPE E 36-INCH DIAMETER	FOOT	26
88030020 SIGNAL HEAD, LED, 1-FACE, 3-SECTION, MAST-ARM MOUNTED	EACH	5
88030100 SIGNAL HEAD, LED, 1-FACE, 5-SECTION, BRACKET MOUNTED	EACH	4
88030110 SIGNAL HEAD, LED, 1-FACE, 5-SECTION, MAST-ARM MOUNTED	EACH	4
88102717 PEDESTRIAN SIGNAL HEAD, LED, 1-FACE, BRACKET MOUNTED WITH COUNTDOWN TIMER	EACH	8
88200210 TRAFFIC SIGNAL BACKPLATE, LOUVERED, ALUMINUM	EACH	9
88500100 INDUCTIVE LOOP DETECTOR	EACH	9
88600100 DETECTOR LOOP, TYPE I	FOOT	907
88700200 LIGHT DETECTOR	EACH	2
88700300 LIGHT DETECTOR AMPLIFIER	EACH	1
89000100 TEMPORARY TRAFFIC SIGNAL INSTALLATION	EACH	1
89100400 ILLUMINATED SIGN, LED	EACH	4
89502300 REMOVE ELECTRIC CABLE FROM CONDUIT	FOOT	5774
89502375 REMOVE EXISTING TRAFFIC SIGNAL EQUIPMENT	EACH	1
89502385 REMOVE EXISTING CONCRETE FOUNDATION	EACH	4
89502380 REMOVE EXISTING HANDHOLE	EACH	8
89502382 REMOVE EXISTING DOUBLE HANDHOLE	EACH	1
Z0073510 TEMPORARY TRAFFIC SIGNAL TIMING	EACH	1
X8730250 ELECTRIC CABLE IN CONDUIT, NO. 20 3/C, TWISTED, SHIELDED	FOOT	511
X8760200 ACCESSIBLE PEDESTRIAN SIGNALS	EACH	8
X8760250 VIBROTACTILE FEATURE	EACH	8

I.D.O.T					
TRAFFIC SIGNAL INSTALLATION					
ELECTRICAL SERVICE REQUIREMENTS					TOTAL WATTAGE
TYPE	NO. LAMPS	WATTAGE		%OPERATION	
		INCAND.	LED		
SIGNAL (RED)	13		17	0.50	110.5
(YELLOW)	13		25	0.25	81.25
(GREEN)	13		15	0.25	48.75
ARROW	16		12	0.10	19.2
PED. SIGNAL	8		25	1.00	200
CONTROLLER	1	100		1.00	100.00
ILLUM. SIGN	4		90	0.50	180.00
VIDEO DET.	0		150	1.00	0
LUMINAIRE	4	400		0.50	800
FLASHER				0.50	-
TOTAL =					1539.7

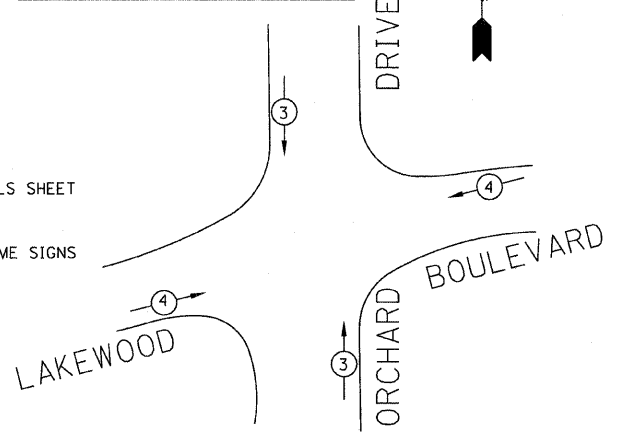
ENERGY COSTS TO:
VILLAGE OF PARK FOREST
350 VICTORY DRIVE
PARK FOREST, ILLINOIS 60466
ENERGY SUPPLY CONTACT: VALERIE MURPHY
PHONE: (708)235-2346
COMPANY: COM ED

PUSHBUTTON NUMBER	DIRECTION OF TRAVEL	PHASE	CROSSING	WALK INTERVAL MESSAGE	EXTENDED 3-SECONDS DEPRESSED TIME MESSAGE
1	SOUTH	6	LAKWOOD BLVD	"WALK SIGN, LAKWOOD BLVD"	"WAIT TO CROSS LAKWOOD BLVD, TRAVELING SOUTH"
2	EAST	8	ORCHARD DRIVE	"WALK SIGN, ORCHARD DRIVE"	"WAIT TO CROSS ORCHARD DRIVE, TRAVELING EAST"
3	WEST	8	ORCHARD DRIVE	"WALK SIGN, ORCHARD DRIVE"	"WAIT TO CROSS ORCHARD DRIVE, TRAVELING WEST"
4	SOUTH	2	LAKWOOD BLVD	"WALK SIGN, LAKWOOD BLVD"	"WAIT TO CROSS LAKWOOD BLVD, TRAVELING SOUTH"
5	NORTH	2	LAKWOOD BLVD	"WALK SIGN, LAKWOOD BLVD"	"WAIT TO CROSS LAKWOOD BLVD, TRAVELING NORTH"
6	WEST	4	ORCHARD DRIVE	"WALK SIGN, ORCHARD DRIVE"	"WAIT TO CROSS ORCHARD DRIVE, TRAVELING WEST"
7	EAST	4	ORCHARD DRIVE	"WALK SIGN, ORCHARD DRIVE"	"WAIT TO CROSS ORCHARD DRIVE, TRAVELING EAST"
8	NORTH	6	LAKWOOD BLVD	"WALK SIGN, LAKWOOD BLVD"	"WAIT TO CROSS LAKWOOD BLVD, TRAVELING NORTH"



PHASE DESIGNATION DIAGRAM

PROPOSED EMERGENCY VEHICLE PREEMPTORS		
EMERGENCY VEHICLE PREEMPTOR	3	4
MOVEMENT	↑↑	→→



EMERGENCY VEHICLE PREEMPTION SEQUENCE

CABLE PLAN LEGEND

(NOTE: SEE DISTRICT 1 STANDARD TRAFFIC SIGNAL DESIGN DETAILS SHEET FOR FULL LEGEND)

ACCESSIBLE PEDESTRIAN SIGNALS

STATE OF ILLINOIS
ORCHARD DRIVE IMPROVEMENTS

TRAFFIC SIGNAL CABLE PLAN,
PHASE DESIGNATION DIAGRAM AND SCHEDULE OF QUANTITIES
ORCHARD DRIVE AND LAKWOOD BOULEVARD



DESIGNED - JUF	REVISED -
DRAWN - MAC	REVISED -
CHECKED - TAO	REVISED -
DATE - 10/31/11	FILE - 060670-PH2+ts-cable-2-LKEWD.sht

F.A.U. RTE.	SECTION	COUNTY	TOTAL SHEETS	SHEET NO.
2836	06-00090-00-FP	COOK	200	120
FED. ROAD DIST. NO. 1 ILLINOIS FED. AID PROJECT			CONTRACT NO. 63635	
			M-603366U	

COPYRIGHT © 2011 BY BAXTER WOODMAN, INC.
 ALL RIGHTS RESERVED.
 LICENSE NO. 06-00090-00-FP-120
 EXPIRES 4/30/2013
 ID: 31/2011 14668 PM 263mcc