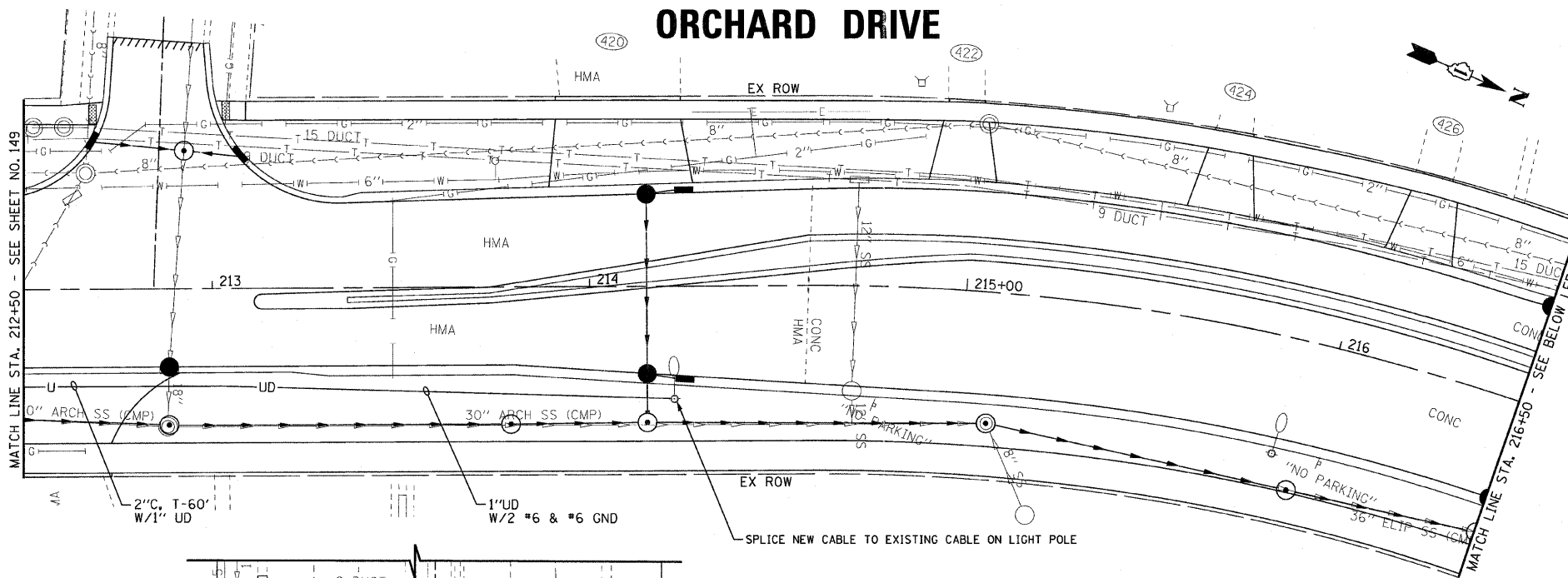
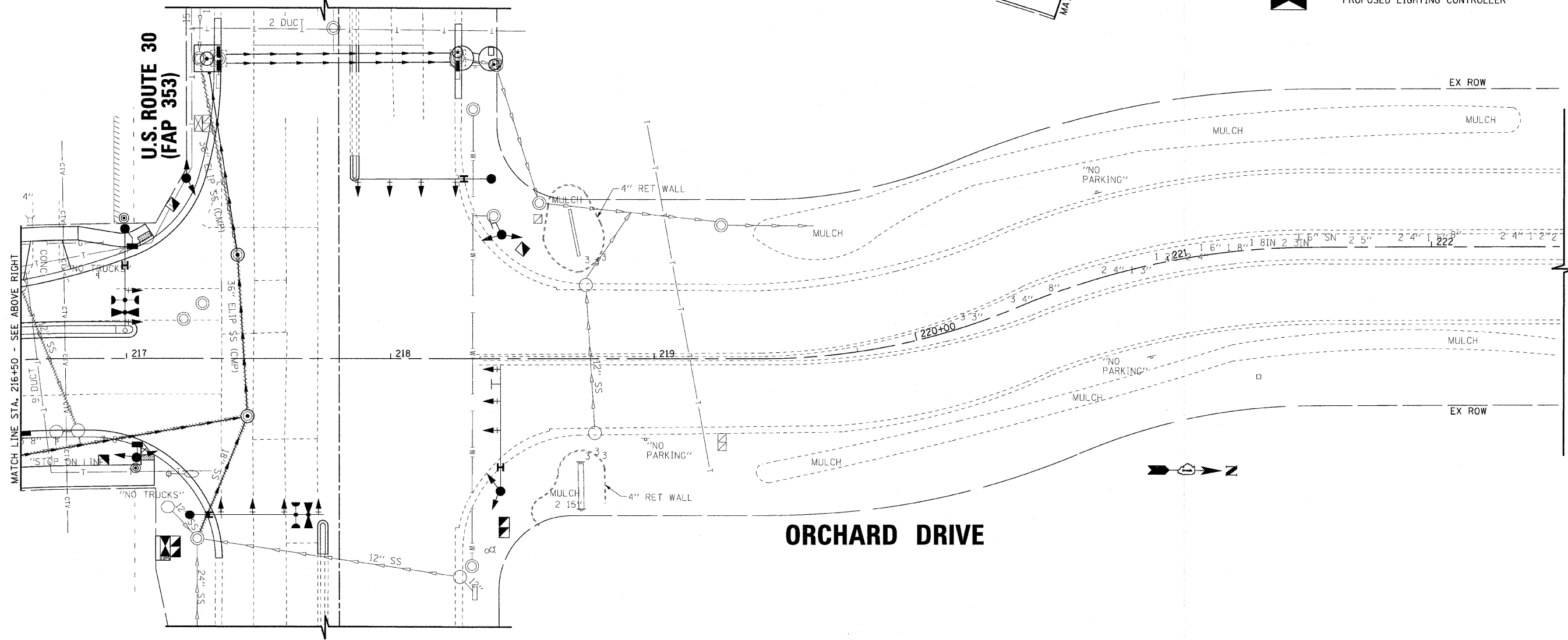


# ORCHARD DRIVE



- LEGEND**
- EXISTING COM-ED SERVICE POLE
  - EXISTING ELECTRICAL CABLES
  - EXISTING TELEPHONE CABLES
  - EXISTING WATER LINES
  - EXISTING UNDERPASS LIGHTING UNIT
  - EXISTING LIGHTING UNIT TO REMAIN
  - EXISTING LIGHTING UNIT REMOVE AND SALVAGE
  - PROPOSED STREET LIGHT, 35' MOUNTING HEIGHT, 250 WATT, PSMH, 240 VOLTS, W/12' ARM
  - 3" CONDUIT, PUSHED 40' LONG WITH 1" UNIT DUCT, OR AS INDICATED
  - UNIT DUCT WITH CABLES AS INDICATED
  - 2" CONDUIT, TRENCHED 25' LONG WITH 1" UNIT DUCT, OR AS INDICATED
  - PROPOSED ELECTRICAL HANDHOLE
  - EXISTING LIGHTING CONTROLLER
  - PROPOSED LIGHTING CONTROLLER



COPYRIGHT © 2011 BY BAXTER & WOODMAN, INC.  
 ALL RIGHTS RESERVED. THIS DRAWING IS THE PROPERTY OF BAXTER & WOODMAN, INC. AND IS NOT TO BE REPRODUCED OR TRANSMITTED IN ANY FORM OR BY ANY MEANS, ELECTRONIC OR MECHANICAL, INCLUDING PHOTOCOPYING, RECORDING, OR BY ANY INFORMATION STORAGE AND RETRIEVAL SYSTEM, WITHOUT THE WRITTEN PERMISSION OF BAXTER & WOODMAN, INC.  
 LICENSE NO. 84-00227, EXPIRES 4/30/2013  
 10/31/2011 10:54:47 PM



DESIGNED - MWH	REVISED -
DRAWN -	REVISED -
CHECKED -	REVISED -
DATE - 10/24/11	FILE - 060670-PH2-SL5.sht

## STATE OF ILLINOIS ORCHARD DRIVE IMPROVEMENTS

### STREET LIGHTING ORCHARD DRIVE

SCALE: 1"=20'      STA. 212+50 TO STA. 222+48

F.A.U. RTE.	SECTION	COUNTY	TOTAL SHEETS	SHEET NO.
2836	06-00090-00-FP	COOK	200	150
FED. ROAD DIST. NO. 1 ILLINOIS FED. AID PROJECT			CONTRACT NO. 63635	
			W-80031661	