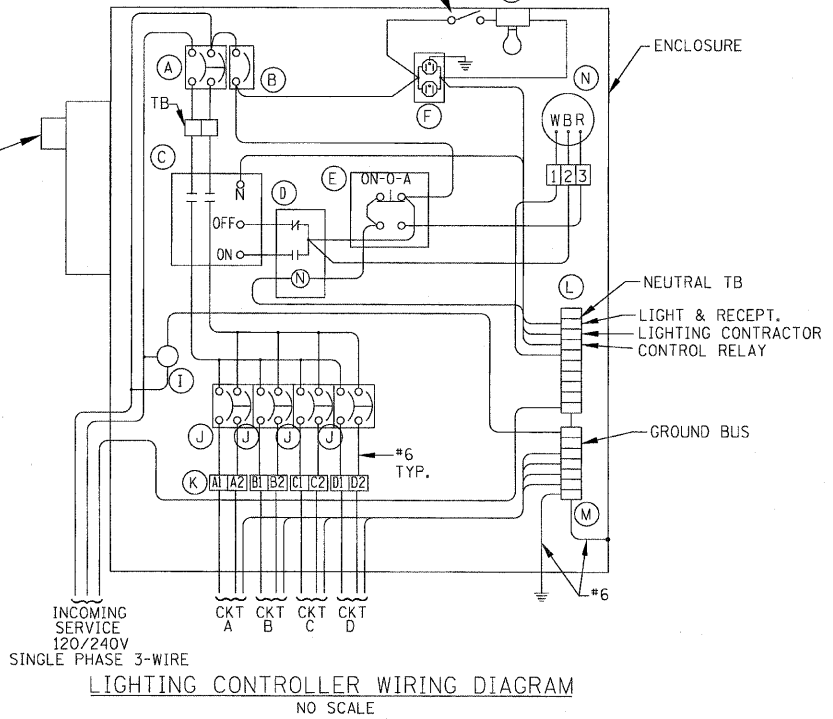
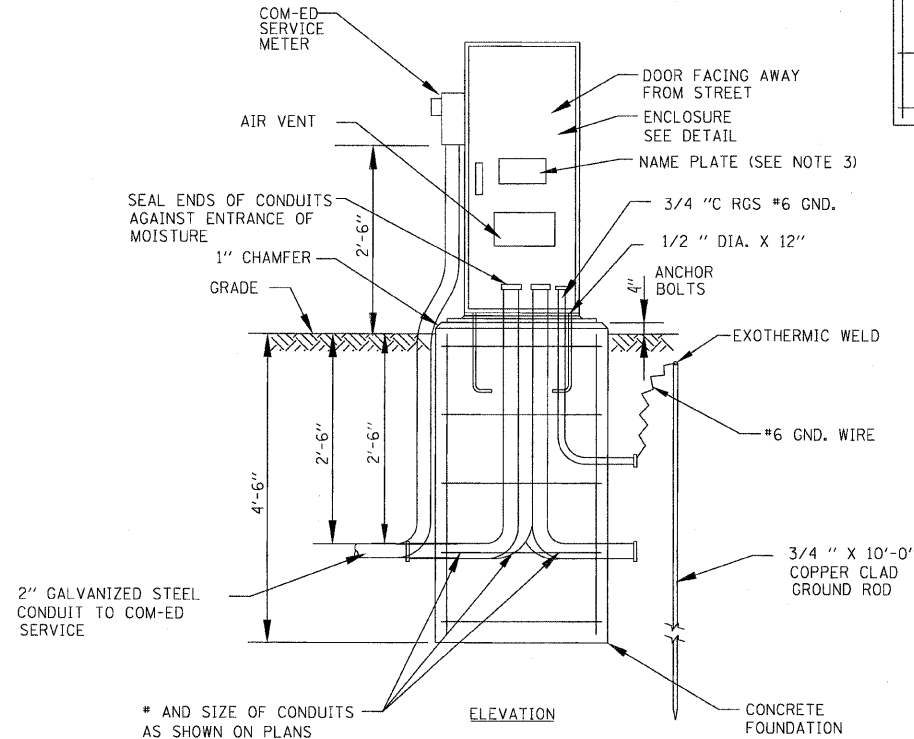
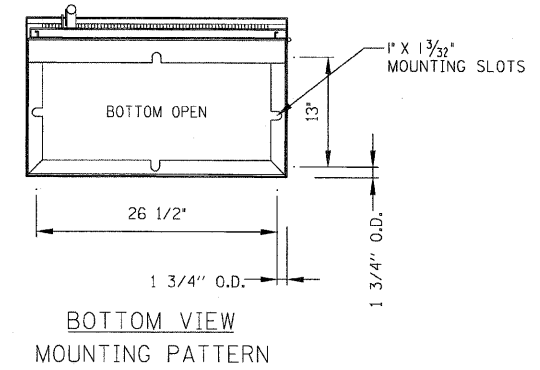
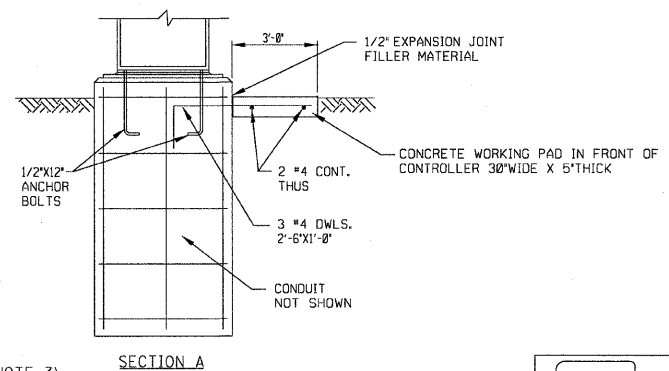
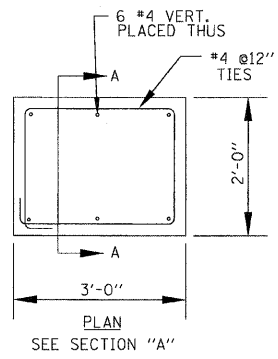
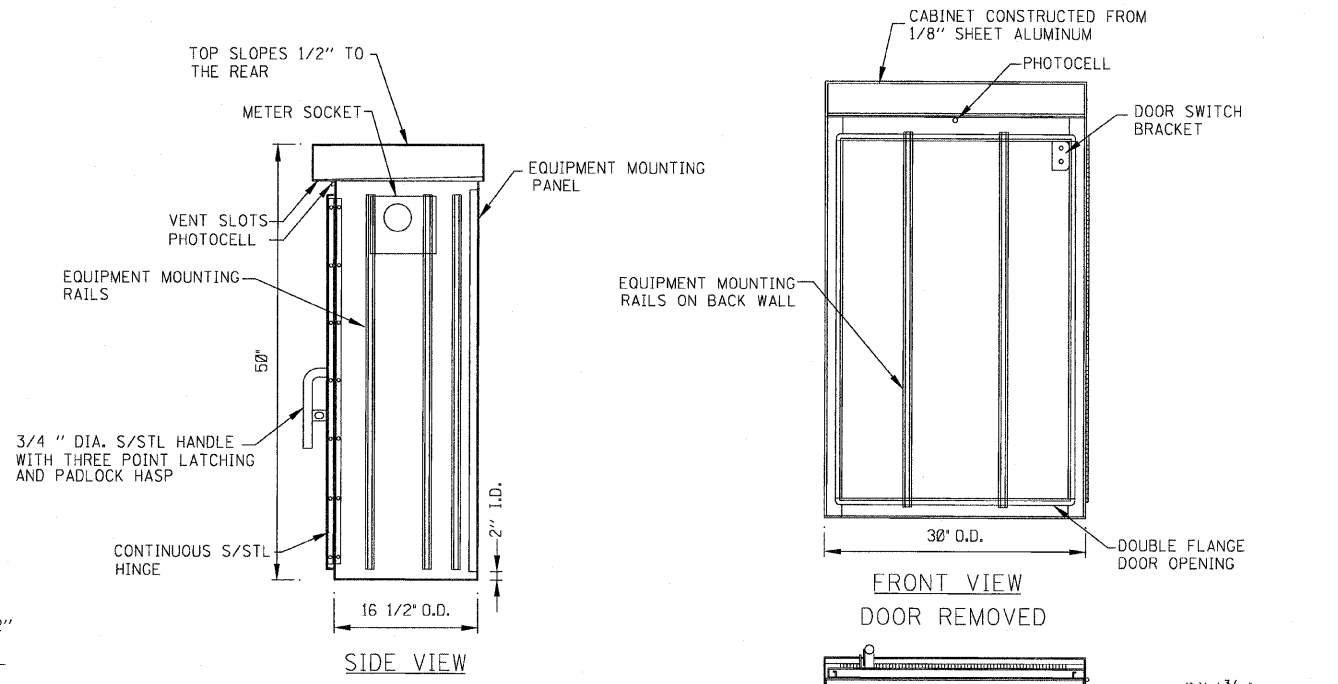


NOTES

- CABINET SHALL BE FABRICATED FROM 0.125-INCH SHEET ALUMINUM #3003H14, FORMED AND ARC WELDED ASSEMBLY WITH NEMA 3R RATING.
- ALL SCREWS AND HARDWARE SHALL BE PLATED, GALVANIZED, OR MADE OF BRASS, ALUMINUM OR STAINLESS STEEL.
- NAME PLATE SHALL HAVE ENGRAVED 0.75-INCH HIGH LETTERS FILLED IN BLACK: "STREET LIGHTING".
- CONNECTION OF SURGE ARRESTOR TO LINE SIDE OF MAIN CIRCUIT BREAKER SHALL NOT BE "DOUBLE LUGGED".
- ELECTRIC UTILITY METER BOX SHALL BE MOUNTED ON THE SIDE OF CONTROL CABINET AS SHOWN ON THE PANEL LAYOUT DIAGRAM.
- THE COMPLETED CONTROLLER SHALL BE U.L. LISTED AS AN INDUSTRIAL CONTROL PANEL UNDER UL508, AND SHOULD BE SERVICE ENTRANCE RATED.
- METAL MOUNTING PANEL SHALL BE #10 GAUGE GALVANIZED SHEET STEEL FLANGED BACK 0.75-INCHES I.D. ON 4 SIDES.
- CIRCUIT BREAKERS AND CONTACTORS AND OTHER COMPONENTS SHALL BE MOUNTED ON 0.125-INCH THICK GLASTIC INSULATION BACK PANEL.
- ALL DEVICES SHALL BE FRONT REMOVABLE.
- BUS BAR SHALL HAVE 22 LUG TERMINALS SIZED TO ACCOMMODATE REQUIRED WIRE SIZES. NEUTRAL BUS SHALL BE PAINTED WHITE. GROUND BUS SHALL BE PAINTED GREEN.
- ALL LUGS SHALL BE COPPER SCREWS AND CONNECTORS, SPRING HELD.
- ALL WIRING TERMINATIONS SHALL BE RATED NOT LESS THAN 75 DEGREE CENTIGRADE.
- ALL CONTROL WIRING SHALL BE 600V MACHINE TOOL WIRE TYPE MTW.
- ALL POWER WIRING SHALL BE 600V TYPE RHH-/RHW.
- A LAMINATED COPY OF THE CIRCUIT SCHEMATIC DIAGRAM SHALL BE ATTACHED TO THE INSIDE OF THE CONTROLLER.
- ALL 120 VOLT SYSTEM AND ALL CONTROL WIRING SHALL BE #12 AWG STRANDED UNLESS OTHERWISE INDICATED.
- ALL WIRING SHALL BE NEATLY DRESSED AND SUPPORTED.

ITEM	QTY.	DESCRIPTION
A	1	MAIN CIRCUIT BREAKER, MOLDED CASE, THERMAL MAGNETIC, 2-POLE, 240 V. SINGLE-PHASE, 100A., BOLT-ON TYPE, TRIP INTERRUPTING RATING OF 22,000 RMS SYMMETRICAL AMPERES AT 240 V.
B	1	BRANCH CIRCUIT BREAKER, MOLDED CASE, THERMAL MAGNETIC 1-POLE, 120 V., 20A, BOLT-ON TYPE, TRIP INTERRUPTING RATING OF 10,000 RMS SYMMETRICAL AMPERES AT 120 V.
C	1	LIGHTING CONTRACTOR MECHANICALLY HELD, CUTLER HAMMER A202K3B-M 100A. 2-POLE, 600 V. WITH 120V COIL.
D	1	CONTROL RELAY CUTLER HAMMER D3PR2 RATED 12 A. AT 120 VAC
E	1	ON-OFF-AUTO 3-POSITION SELECTOR SWITCH GE CR104P HEAVY DUTY SWITCH, RATED FOR 10 A. AT 600 VAC.
F	1	GFCI RECEPTACLE, 120 V., 20 A. SPEC. GRADE, NEMA CONFIG. 5-20R.
G	1	SPDT MOMENTARY NORMALLY OPEN, NORMALLY CLOSED PUSH BUTTON SWITCH CUTLER HAMMER B4F1063 RATED 15 A. AT 120 V.
H	1	60 WATT LIGHT FIXTURE, VAPOR TIGHT, WITH GLOBE, GUARD AND MOUNTING BOX.
I	1	SECONDARY SURGE ARRESTOR SQUARE D SDSA1175, 175 VAC PHASE-TO-GROUND MAXIMUM.
J	1	BRANCH CIRCUIT BREAKER, MOLDED CASE, THERMAL MAGNETIC, 2-POLE, 240 V. SINGLE-PHASE, 30A. TRIP INTERRUPTING RATING 10,000 RMS SYMMETRICAL AMPERES AT 240 V.
K	1	TERMINAL BLOCK RATED 600 V., 85 A.
L	1	COPPER NEUTRAL BUS.
M	1	COPPER GROUND BUS.
N	1	PHOTOCELL-120V, BUTTON STYLE, DELAY TYPE, SPST



COPYRIGHT © 2011 BY BAXTER & WOODMAN, INC.
 ALL RIGHTS RESERVED. THIS DOCUMENT IS THE PROPERTY OF BAXTER & WOODMAN, INC. AND IS NOT TO BE REPRODUCED OR TRANSMITTED IN ANY FORM OR BY ANY MEANS, ELECTRONIC OR MECHANICAL, WITHOUT THE WRITTEN PERMISSION OF BAXTER & WOODMAN, INC.
 LICENSE NO. 06-00211 - EXPIRES 4/30/2013
 10/21/2011 10:57 AM



DESIGNED - MWH	REVISED -
DRAWN - CJC	REVISED -
CHECKED -	REVISED -
DATE - 10/24/11	FILE - 060670-PH2-SL-DETAILS.shp

**STATE OF ILLINOIS
ORCHARD DRIVE IMPROVEMENTS**

**STREET LIGHTING DETAILS
LIGHTING CONTROLLER**

SCALE: NONE STA. TO STA.

F.A.U. RTE.	SECTION	COUNTY	TOTAL SHEETS	SHEET NO.
2836	06-00090-00-FP	COOK	200	151
CONTRACT NO. 63635			FED. ROAD DIST. NO. 1 ILLINOIS FED. AID PROJECT N-8003166U	