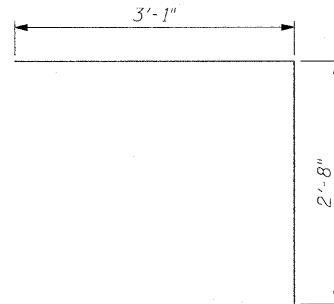


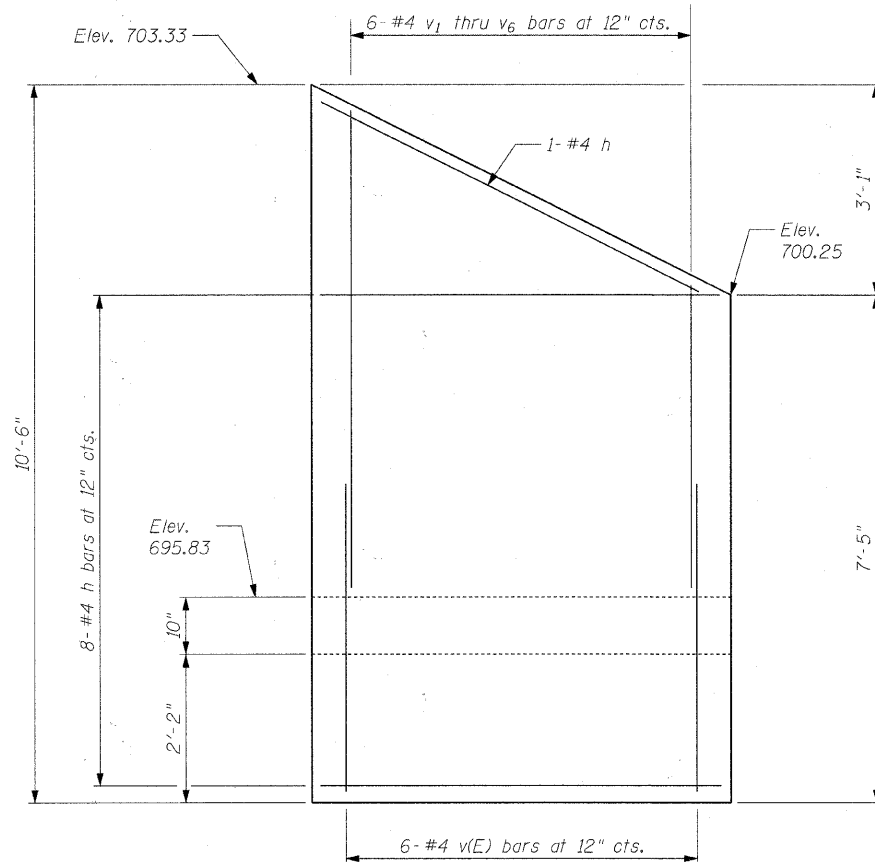
PLAN
SCALE: 3/4" = 1'-0"



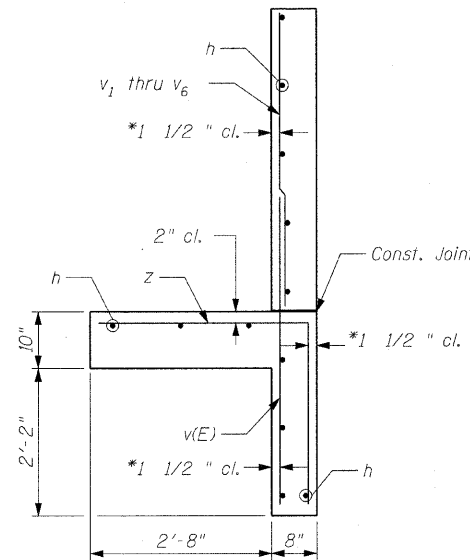
BAR Z

DESIGN STRESSES

$f_y = 60,000 \text{ psi}$
 $f'_c = 3,500 \text{ psi}$
 Max. soil pressure under footing = 2,850 psi

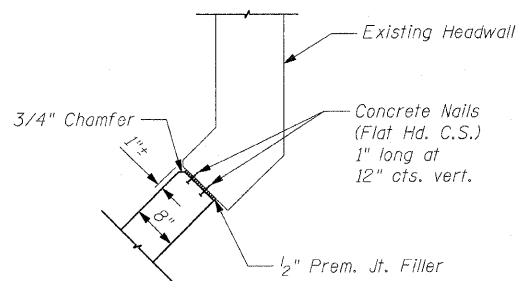


ELEVATION
SCALE: 3/4" = 1'-0"



SECTION A-A
SCALE: 3/4" = 1'-0"

* v bars shall not be placed more than 1 1/2" cl. from back face of wingwall.

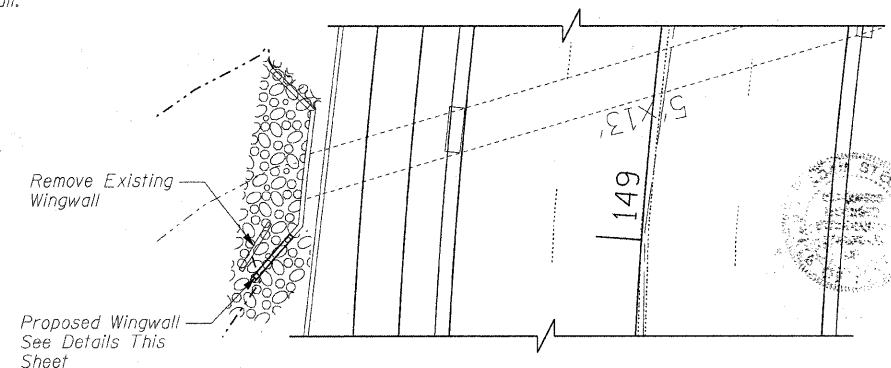


CORNER DETAIL
SCALE: 3/4" = 1'-0"

BILL OF MATERIAL

Bar	No.	Size	Length	Shape		
h	13	#4	5'-11"	—		
v(E)	6	#4	4'-6"	—		
v1	1	#4	4'-6"	—		
v2	1	#4	5'-0"	—		
v3	1	#4	5'-6"	—		
v4	1	#4	6'-0"	—		
v5	1	#4	6'-6"	—		
v6	1	#4	7'-0"	—		
z	6	#4	5'-9"	L		
Concrete Removal *					Cu. Yd.	2
Structure Excavation					Cu. Yd.	11
Concrete Structures					Cu. Yd.	2
Reinforcement Bars					Pound	75
Reinforcement Bars, Epoxy Coated					Pound	20

* Subject to construction variation



SITE PLAN
SCALE: 1" = 10'-0"

COPYRIGHT © 2011 BY BAXTER & WOODMAN, INC.
 ALL RIGHTS RESERVED. THIS DRAWING IS THE PROPERTY OF BAXTER & WOODMAN, INC. AND IS NOT TO BE REPRODUCED OR TRANSMITTED IN ANY FORM OR BY ANY MEANS, ELECTRONIC OR MECHANICAL, INCLUDING PHOTOCOPYING, RECORDING, OR BY ANY INFORMATION STORAGE AND RETRIEVAL SYSTEM, WITHOUT THE WRITTEN PERMISSION OF BAXTER & WOODMAN, INC.
 BAXTER & WOODMAN, INC.
 5227 KIM
 0/17/2011 9:27:59 AM
 I:\XG-ygsta Lake Park\PROJECT\060670-CADD-SURVEY\DRAWINGS\DRN\060670-PH2-ST2.sht



DESIGNED - AS	REVISED -
DRAWN - CJC	REVISED -
CHECKED - CAB	REVISED -
DATE - 10/24/11	FILE - 060670-PH2-ST2.sht

STATE OF ILLINOIS
ORCHARD DRIVE IMPROVEMENTS

WINGWALL REPLACEMENT

SCALE: NONE STA. TO STA.

F.A.U. RTE.	SECTION	COUNTY	TOTAL SHEETS	SHEET NO.
2836	06-00090-00-FP	COOK	200	153
CONTRACT NO. 63635			FED. ROAD DIST. NO. 1 ILLINOIS FED. AID PROJECT M-8003661	

