

NOTES

GENERAL NOTES

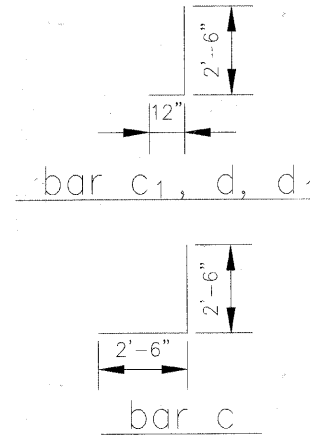
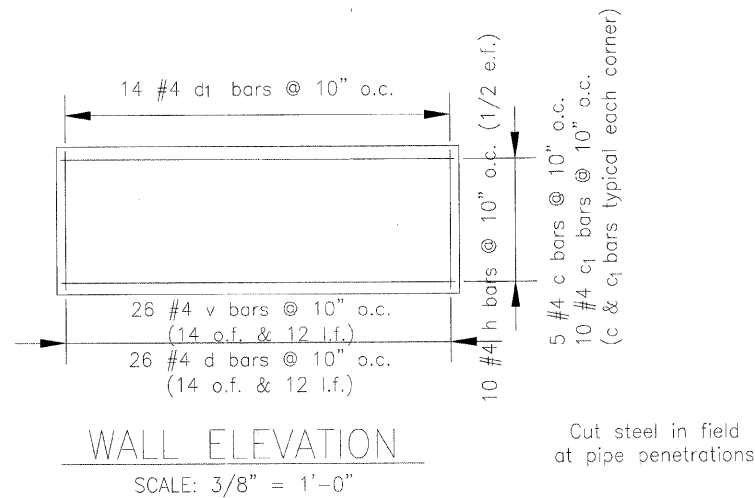
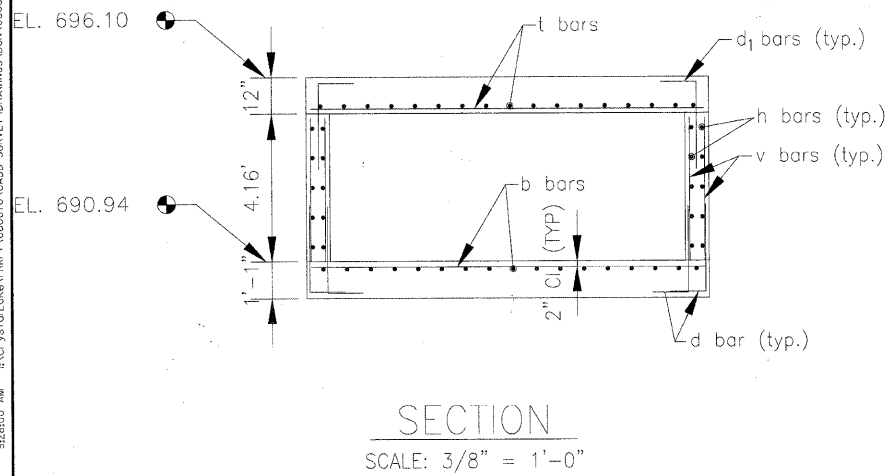
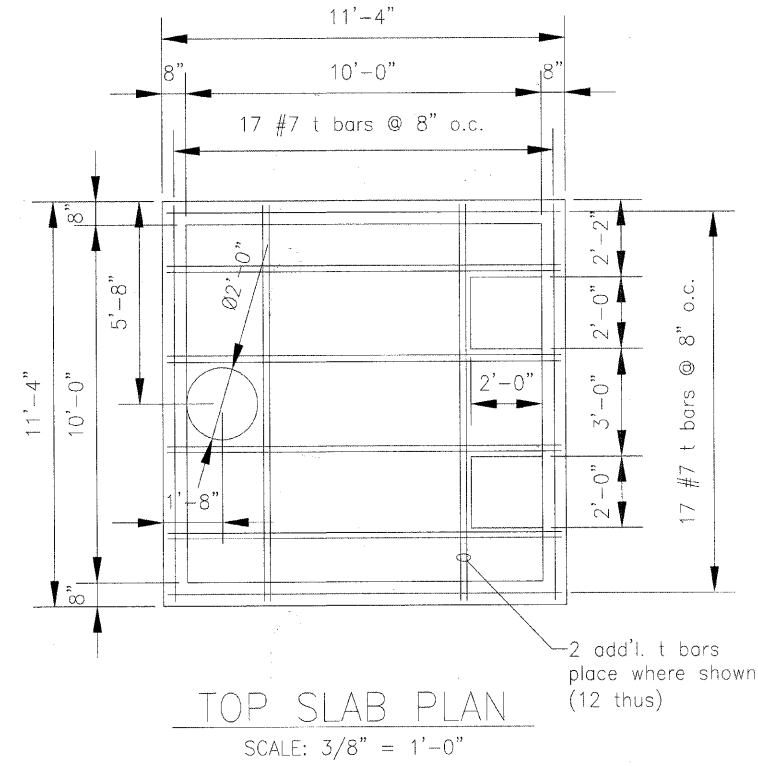
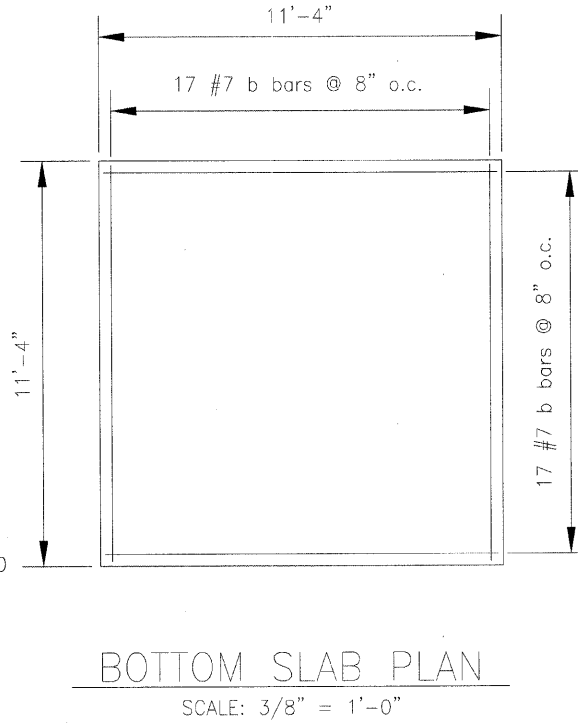
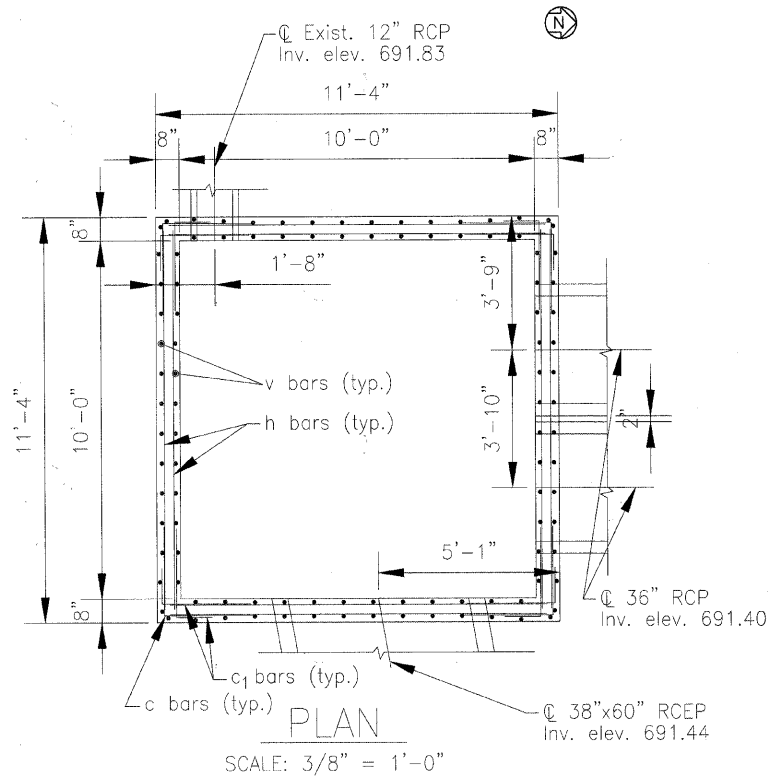
- DESIGNED IN ACCORDANCE WITH THE AASHTO STANDARD SPECIFICATIONS FOR HIGHWAY BRIDGES, DATED 2002. ALL MATERIALS AND WORKMANSHIP SHALL BE IN ACCORDANCE WITH THE ILLINOIS DEPARTMENT OF TRANSPORTATION STANDARD SPECIFICATION FOR ROAD AND BRIDGE CONSTRUCTION ADOPTED JANUARY 1, 2007 AND SUPPLEMENTAL SPECIFICATIONS AND RECURRING SPECIAL PROVISIONS ADOPTED JANUARY 1, 2011.
- CONCRETE CLASS SI ($f'_c = 3,500$ PSI MINIMUM) EXCEPT WHERE SHOWN ON THE DRAWINGS.
- REINFORCEMENT BARS SHALL CONFORM TO THE REQUIREMENTS OF ASTM A706, GR. 60.
- REINFORCEMENT BENDING DETAILS SHALL BE IN ACCORDANCE WITH THE DETAILS AND DETAILING OF CONCRETE REINFORCEMENT, ACT 315 LATEST EDITION.

- NO CONSTRUCTION JOINTS EXCEPT THOSE SHOWN ON THE PLANS WILL BE ALLOWED WITHOUT APPROVAL OF ENGINEER.

CONSTRUCTION SPECIFICATIONS

IDOT: "STANDARD SPECIFICATIONS FOR ROAD AND BRIDGE CONSTRUCTION", ADOPTED JANUARY 1, 2007 AND "SUPPLEMENTAL SPECIFICATIONS AND RECURRING SPECIAL PROVISIONS", ADOPTED JANUARY 1, 2011 BY THE ILLINOIS DEPARTMENT OF TRANSPORTATION.

BILL OF MATERIAL					
Bar	No.	Size	Length	Shape	
b	34	#7	11'-1"	---	
c	20	#4	5'-0"	L	
c1	40	#4	3'-6"	L	
d	104	#4	3'-6"	L	
d1	56	#4	3'-6"	L	
h	40	#4	11'-1"	---	
v	104	#4	3'-10"	---	
t	46	#7	11'-1"	---	
Reinforcement Bars				Pound	2930
Concrete Structures				Cu. Yd.	14



COPYRIGHT © 2011 BY BAXTER & WOODMAN, INC.
 STATE OF ILLINOIS - PROFESSIONAL DESIGN FIRM
 522 N. W. 10th St., Suite 100, Chicago, IL 60607
 DATE: 10/17/2011



DESIGNED - AS	REVISED -
DRAWN - UKB	REVISED -
CHECKED - CAB	REVISED -
DATE - 10/24/11	FILE - 060670-PH2-ST1.sht

**STATE OF ILLINOIS
ORCHARD DRIVE IMPROVEMENTS**

SCALE: AS NOTED

STA. TO STA.

JUNCTION CHAMBER

SECTION	COUNTY	TOTAL SHEET NO.
2830	COOK	200 154
CONTRACT NO. 63635		

