

Deck Drains:
8" Half Circle 12 Ga. corr. std.
culvert pipe - perforated
and bituminous coated.
Pan - 12 Ga. Sheet metal.

Rail and tie plate ----- 7 1/2"
Track tie ----- 7"
Ballast ----- 8"
Waterproofing, base and protection and drainage ----- 6"
Floor plate (Riveted to Beams) ----- 3"
Beam and deflection ----- 18"
Top of Rail to Under Clearance Line = 5'-6 1/2"

TOTAL ESTIMATED QUANTITIES

BID ITEMS	UNIT	SUB-STRUCTURE	SUPER-STRUCTURE	TOTAL
By Bridge Contractor				
Structural excavation - Class A	C.Y.	1,075		1,075
Concrete - Class "X"	C.Y.	825		825
Reinforcement Bars	Lb.	35,460		35,460
Structural carbon steel & Steel castings	Lb.		233,500	233,500
Deck waterproofing and protection	S.F.		1,950	1,950
Metal deck drains	L.F.		126	126
Wrought iron pipe handrail	L.F.		131	131
Bituminous coated corr. metal pipe	L.F.		134	134
Perforated corrugated metal pipe	L.F.		175	175
Porous granular embankment	C.Y.		1,400	1,400
Electric Lighting System Complete	EACH			1
Name Plates	EACH			2

GENERAL NOTES

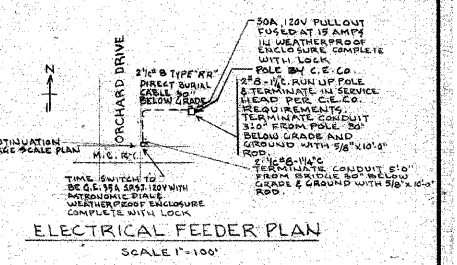
Specifications:
Structural steel design - A.R.E.A. 1958.
Reinforced concrete design - A.R.E.A. 1958, $f_c = 3000$.
Live Load design - Cooper Class E72 with steam locomotive impact.
Material and Workmanship - Standard Specifications for Road and Bridge Construction, State of Illinois, Department of Public Works and Buildings, Division of Highways, adopted Jan. 2, 1958. Special Provisions.

Foundation:
Soil. Maximum load without longitudinal and lateral forces 1.75 tons per sq. ft.
Maximum load with longitudinal and lateral forces 2.2 tons per sq. ft.

Bench Mark: J.A. & Assoc. U.S.G.S. Datum Elev. 700.57.
B.M. # 26 Top 6" Square Cornerstone N & Corner Section 25-35-13 at M.C.R.W.

Track Alignment: Tangent.
Proposed Track Grade: 0.075% descending West.
Bridge Level: Top of Mastic Protection to slope 1/8" per ft. from $\frac{1}{2}$ of span toward the Abutments.

WIRING NOTES:
ELECTRICAL CONTRACTOR SHALL FURNISH ALL LABOR AND MATERIAL NECESSARY FOR THE COMPLETE LIGHTING INSTALLATION. SHALL INCLUDE ALL TRENCHING & BACKFILL AND ANY OTHER ITEMS THAT MAY BE NECESSARY FOR THE COMPLETION OF THE JOB. ALL CONDUIT TO BE HEAVY WALL GALVANIZED.



Correct: _____
Approved: _____

released for const.	no.	date	description	by

GENERAL PLAN		10-C.S.-B
ORCHARD DRIVE UNDERPASS		project engineer:
MICHIGAN CENTRAL R.R.		S.E.P.
PARK FOREST INDUSTRIAL PARK		architect: M.M.V.
PARK FOREST ILLINOIS		engineer:
A. EPSTEIN AND SONS, INC.		drawn by: M.M.V.
ENGINEERS		job no:
2011 WEST PERSHING ROAD		57-1629
CHICAGO, ILLINOIS		date: MAY 15, 1959
		E-4



DESIGNED -	MAC	REVISED -	
DRAWN -	MAC	REVISED -	
CHECKED -		REVISED -	
DATE -	7/1/11	FILE -	060670-PH2-ST4.sht

VILLAGE OF PARK FOREST, ILLINOIS
ORCHARD DRIVE IMPROVEMENTS

EXISTING STRUCTURAL PLANS
FOR INFORMATION ONLY

SCALE: NONE STA. TO STA.

F.A.U. RTE.	SECTION	COUNTY	TOTAL SHEETS	SHEET NO.
2836	06-00090-00-FP	COOK	200	157
FED. ROAD DIST. NO. 1 ILLINOIS			CONTRACT NO. 63635	
FED. AID PROJECT			M-80031661	

COPYRIGHT © 2011 BY BAXTER & WOODMAN, INC.
 STATE OF ILLINOIS - PROFESSIONAL DESIGN FIRM
 LICENSE NO. - BF-001201 - EXPIRES 4/30/2013
 8/26/2011 4:40:10 PM
 \\baxter\server\2011\2234\4011 - PHASE 2\060670-PH2-ST4.sht
 I:\cyril\11\11\060670\code\sur\vey\dr\chinas\cgm\060670-PH2-ST4.sht