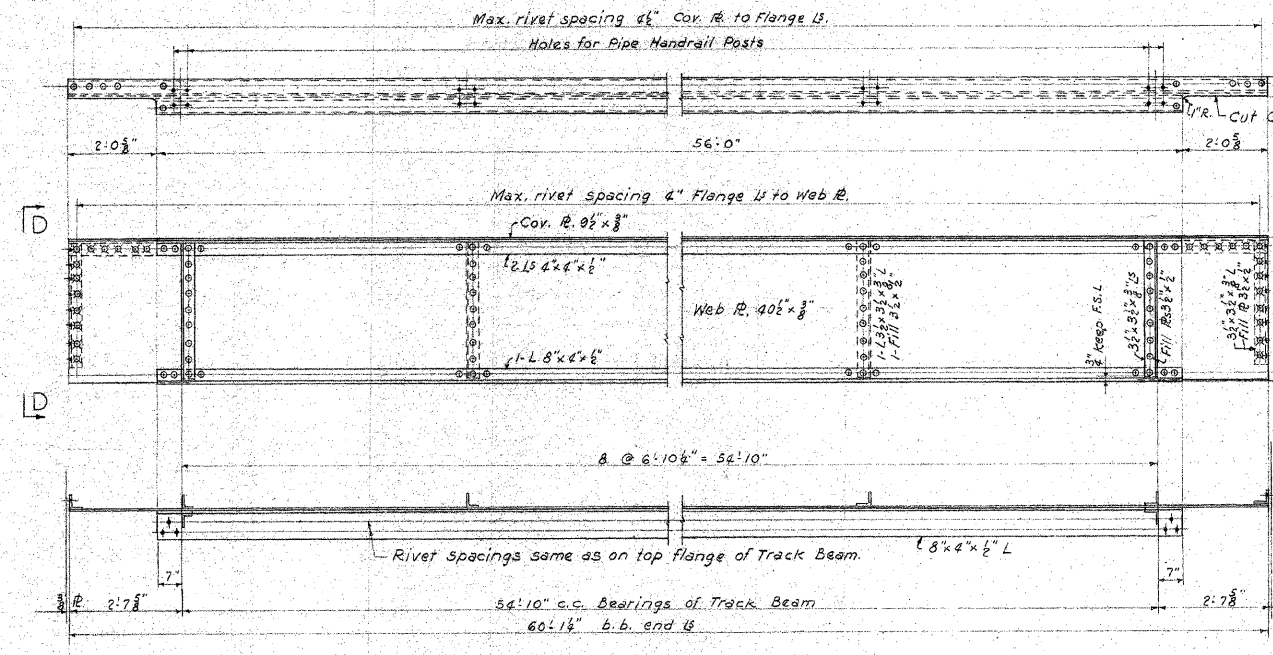
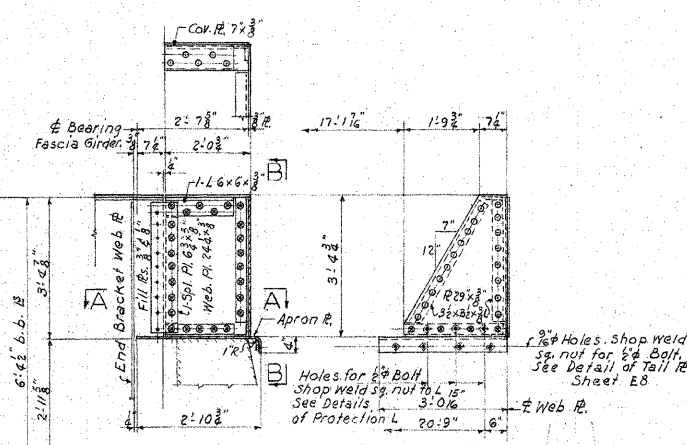


FASCIA GIRDER

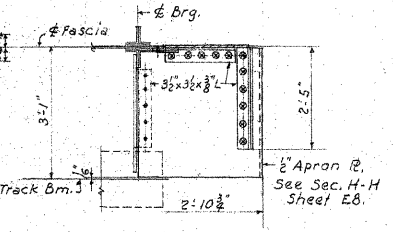


TEMPORARY FASCIA AND BALLAST STOP
Scale: 1/2" = 1'-0"



FASCIA GIRDER EXTENSION
Scale: 1/2" = 1'-0"

VIEW B-B
Scale: 1/2" = 1'-0"

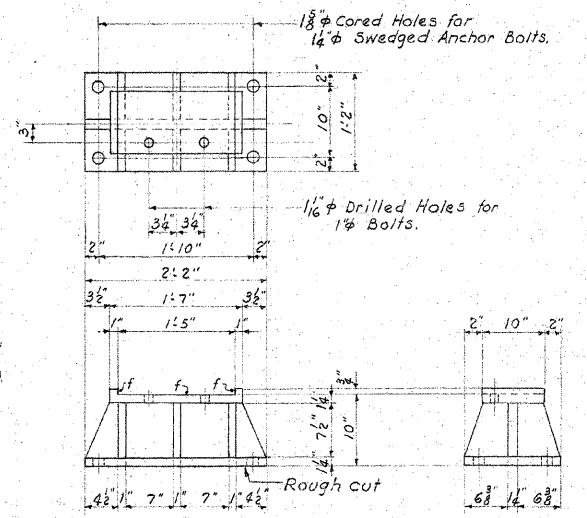


SECTION A-A
Scale: 1/2" = 1'-0"

VIEW C-C
Scale: 1/2" = 1'-0"

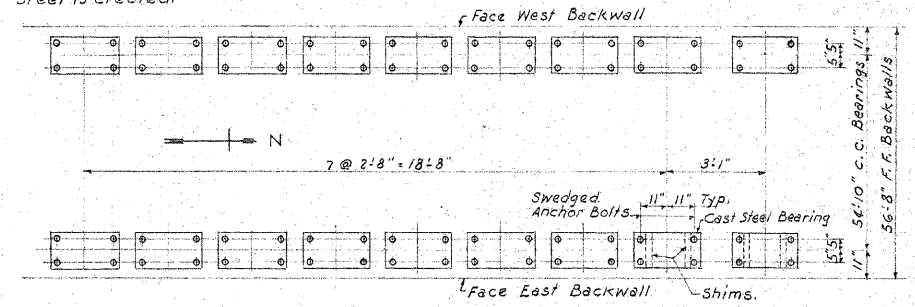
DETAIL "F"
Scale: 1/8" = 1'-0"

ANCHOR BOLT
Scale: 1 1/2" = 1'-0"



CAST STEEL BEARING
Scale: 1" = 1'-0"

ERECTOR NOTE (Fabricator to show this note on shop plan)
Normal shim thickness is 3/8" under cast steel bearings. The bearings shall be set level on normal shims and blocked accurately in position. After the steel has been erected the shims shall be adjusted if necessary, and the bearings shall be fixed in position by properly ramming in rust joint iron grout. Slope the outside surface 45° and after thorough oxidation paint the surface with an asphalt paint.



BEARING AND ANCHOR BOLT LOCATION PLAN

Provide one set of the following shims for each bearing.
 1 - R. 2 1/2" x 1/2" x 1'-2"
 1 - R. 2 1/2" x 3/8" x 1'-2"
 3 - R. 2 1/2" x 1/2" x 1'-2"
 2 - R. 2 1/2" x 1/4" x 1'-2"

See Sheet E7 for Notes for Steel Superstructure and Estimated Quantities.

FASCIA GIRDER AND BEARING DETAILS				10-C.S.-B
ORCHARD DRIVE UNDERPASS MICHIGAN CENTRAL R.R.				project engineer: S.E.P.
PARK FOREST INDUSTRY PARK PARK FOREST ILLINOIS				architect: M.M.V. engineer: drawn by: M.M.V.
A. EPSTEIN AND SONS, INC. ENGINEERS 2011 WEST PERSHING ROAD CHICAGO 9 ILLINOIS				job no: 57-1629 date: MAY 15, 1959
REVISIONS				E-9



DESIGNED -	MAC	REVISED -	
CHECKED -	MAC	REVISED -	
DATE -	7/1/11	FILE -	060670-PH2-ST4.sht

VILLAGE OF PARK FOREST, ILLINOIS
ORCHARD DRIVE IMPROVEMENTS

EXISTING STRUCTURAL PLANS
FOR INFORMATION ONLY

SCALE: NONE STA. TO STA.

F.A.U. RTE.	SECTION	COUNTY	TOTAL SHEETS NO.
2836	06-00090-00-FP	COOK	200
FED. ROAD DIST. NO. 1 ILLINOIS			CONTRACT NO. 63635
FED. AID PROJECT			M-8003166D

COPYRIGHT © 2011 BY BAXTER & WOODMAN, INC.
 STATE OF ILLINOIS PROFESSIONAL DESIGN FIRM
 LICENSE NO. 184-00021 - EXPIRES 4/30/2013
 6/28/2011 10:54:47 PM