

ROUTE MARKERS

FOR U.S. ROUTES
MI-40-2424

FOR ILLINOIS ROUTES
MI-50-2424

R.R. UNMARKED ROUTES
SPECIAL 24" x 18" VARIABLE
4" BLACK LETTERS ON WHITE
REFLECTIVE BACKGROUND

ARROWS SIGNS

M5-1L-2115

M5-1R-2115

M6-1-2115

M6-1-2115

M6-3-2115

CARDINAL DIRECTION & DETOUR SIGNS

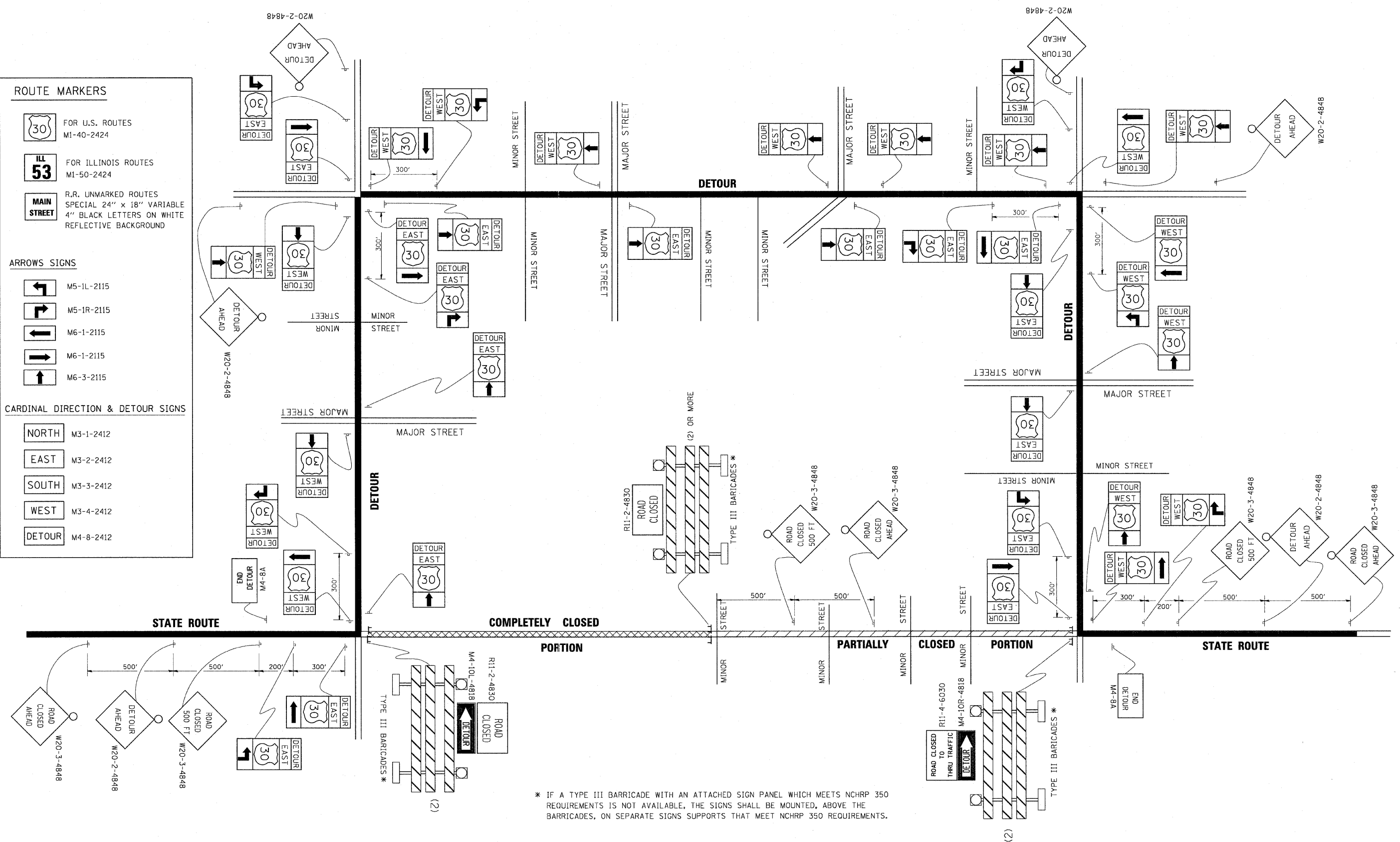
NORTH M3-1-2412

EAST M3-2-2412

SOUTH M3-3-2412

WEST M3-4-2412

DETOUR M4-8-2412



* IF A TYPE III BARRICADE WITH AN ATTACHED SIGN PANEL WHICH MEETS NCHRP 350 REQUIREMENTS IS NOT AVAILABLE, THE SIGNS SHALL BE MOUNTED, ABOVE THE BARRICADES, ON SEPARATE SIGNS SUPPORTS THAT MEET NCHRP 350 REQUIREMENTS.

FILE NAME =	USER NAME = drivakosgn	DESIGNED -	REVISED - 10-18-02	STATE OF ILLINOIS DEPARTMENT OF TRANSPORTATION	DETOUR SIGNING FOR CLOSING STATE HIGHWAYS			F.A.U. RTE.	SECTION	COUNTY	TOTAL SHEETS	SHEET NO.			
os\pw_work\PW\DOT\DRIVAKOSGN\0108315\21.dgn		DRAWN -	REVISED - R. BORO 09-14-09		SCALE: NONE	SHEET NO. 1	OF 1	SHEETS	STA.	TO STA.	2836	06-000090-00-EP	COOK	200	173
		CHECKED -	REVISED -									TC-21		CONTRACT NO. 63635	
		DATE -	REVISED -									FED. ROAD DIST. NO. 1		ILLINOIS FED. AID PROJECT	M-8003(661)