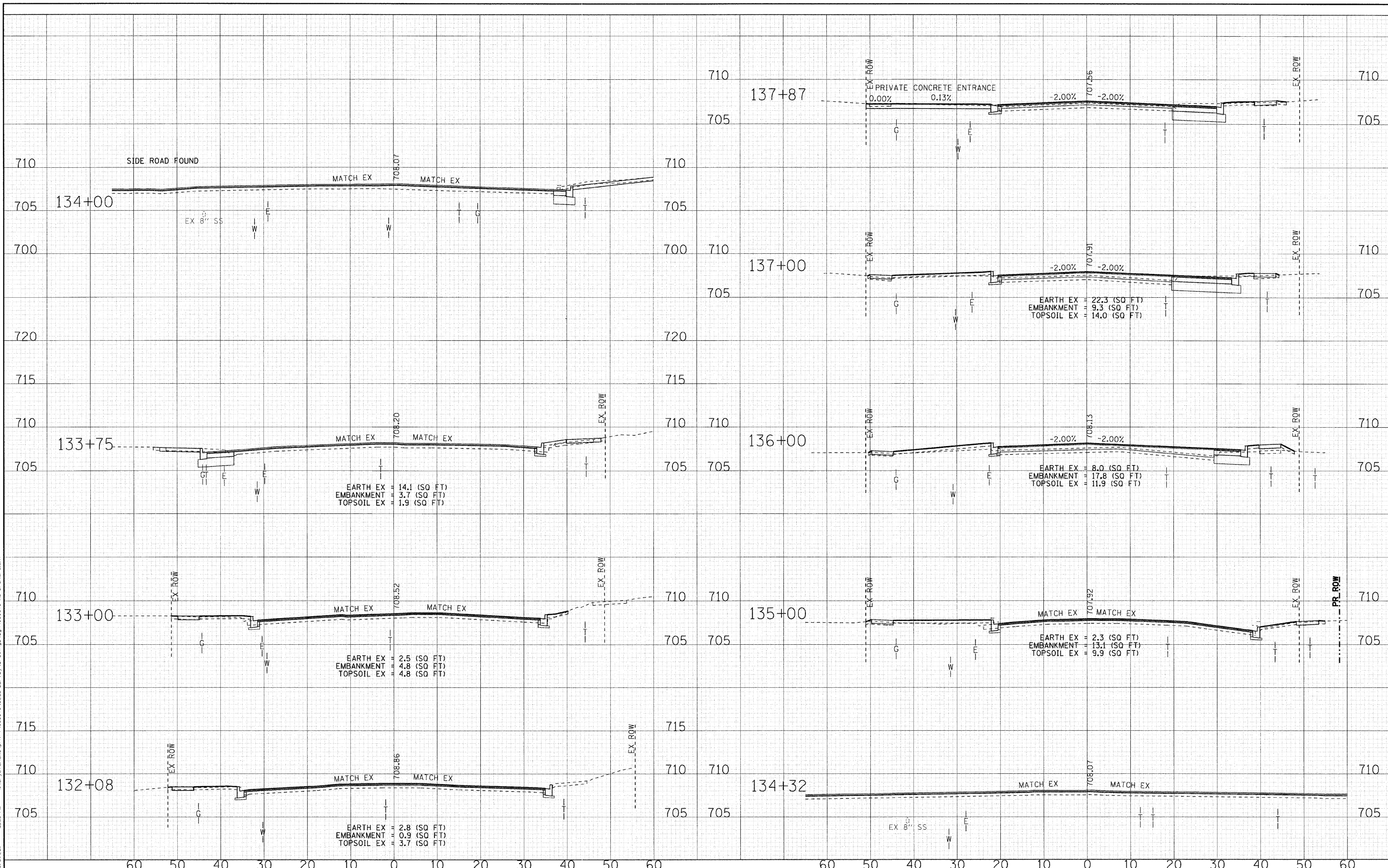


DESIGNED BY: BAYNE & WARDMAN, INC.
 STATE OF ILLINOIS
 LICENSE NO.: 06-00090-00-PP
 DATE: 10/24/11



DESIGNED - REW	REVISED -
DRAWN - MAC	REVISED -
CHECKED - TAO	REVISED -
DATE - 10/24/11	REVISED -

**STATE OF ILLINOIS
ORCHARD DRIVE IMPROVEMENTS**

CROSS SECTIONS ORCHARD DRIVE	
SCALE: H: 1"=10' V: 1"=5'	STA. 132+08 TO STA. 137+87

F.A.I. RTE.	SECTION	COUNTY	TOTAL SHEETS	SHEET NO.
2836	06-00090-00-PP	COOK	200	182
CONTRACT NO. 63635			FED. ROAD DIST. NO. 1 (ILLINOIS) FED. AID PROJECT M-60031661	