

F.A.U. RTE.	SECTION	COUNTY	TOTAL SHEETS	SHEET NO.
2556	08-00094-01-BR	COOK	30	1
FED. ROAD DIST NO. 1	ILLINOIS	CONTRACT NO. 63636		

STATE OF ILLINOIS  
DEPARTMENT OF TRANSPORTATION  
DIVISION OF HIGHWAYS

# PLANS FOR PROPOSED FEDERAL AID HIGHWAY

FAU 2556 WALNUT LANE  
OVER POPLAR CREEK  
CULVERT REPLACEMENT  
SECTION 08-00094-01-BR  
PROJECT NO. BRM-9003(820)  
COOK COUNTY  
VILLAGE OF SCHAUMBURG  
JOB #: C-91-556-11

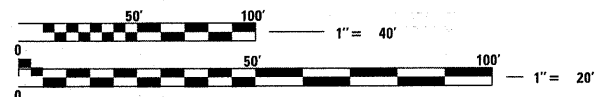


**INDEX TO SHEETS**

SHEET NO.	DESCRIPTION
1	COVER SHEET
2	GENERAL NOTES AND TIES
3	SUMMARY OF QUANTITIES
4-5	SCHEDULE OF QUANTITIES
6	TYPICAL SECTIONS
7	PLAN AND PROFILE
8	REMOVAL SHEET
9-11	EROSION CONTROL PLANS
12-14	MISCELLANEOUS DETAILS
15	TC-13 TYPICAL PAVEMENT MARKINGS
16-17	DETOUR PLAN
18-25	STRUCTURE PLANS
26	SOIL BORINGS
27-30	CROSS SECTIONS

**HIGHWAY STANDARDS**

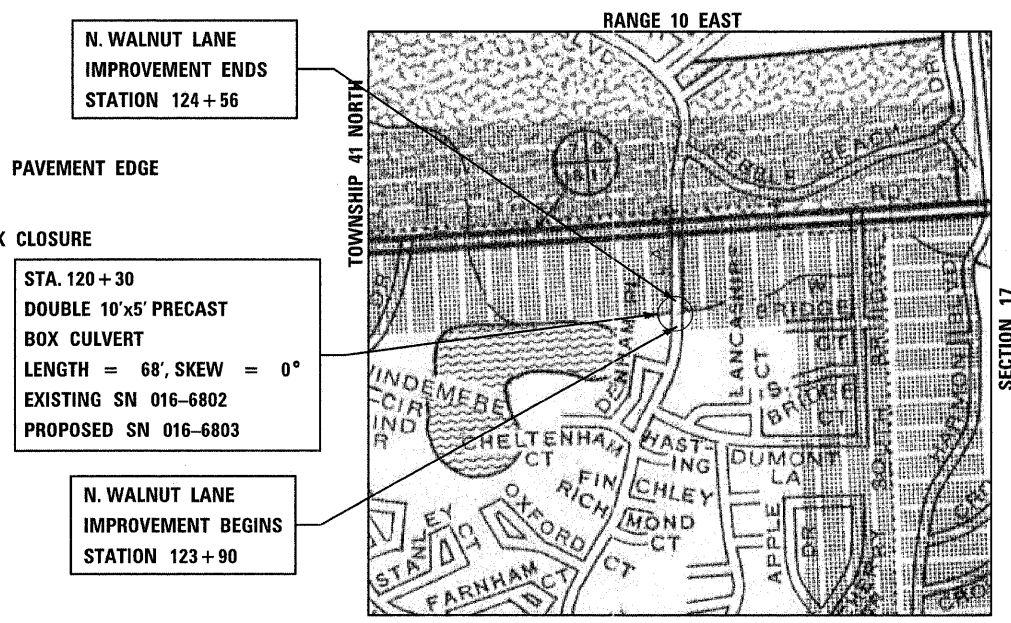
000001-06	STANDARD SYMBOLS, ABBREVIATIONS, AND PATTERNS
280001-06	TEMPORARY EROSION CONTROL SYSTEMS
424001-06	PERPENDICULAR CURB RAMPS FOR SIDEWALKS
442201-03	CLASS C AND D PATCHES
515001-03	NAME PLATE FOR BRIDGES
542401-01	METAL END SECTION FOR PIPE CULVERTS
602401-03	MANHOLE, TYPE A
602406-05	MANHOLE, TYPE A, 6' (1.8 M) DIAMETER
602701-02	MANHOLE STEPS
604001-03	FRAME AND LIDS, TYPE1
606001-04	CONCRETE CURB TYPE B AND COMBINATION CURB AND GUTTER
664001-02	CHAIN LINK FENCE
701006-03	OFF-ROAD OPERATIONS 2L, 2W, 4.5M (15') TO 600 MM (24") FROM PAVEMENT EDGE
701011-02	OFF-ROAD MOVING OPERATIONS 2L, 2W, DAY ONLY
701801-05	LANE CLOSURE, MULTILANE 1W OR 2W CROSSWALK OR SIDEWALK CLOSURE
701901-02	TRAFFIC CONTROL DEVICES
780001-03	TYPICAL PAVEMENT MARKINGS



FULL SIZE PLANS HAVE BEEN PREPARED USING STANDARD ENGINEERING SCALES. REDUCED SIZED PLANS WILL NOT CONFORM TO STANDARD SCALES. IN MAKING MEASUREMENTS ON REDUCED PLANS, THE ABOVE SCALES MAY BE USED.

J.U.L.I.E.  
JOINT UTILITY LOCATION INFORMATION FOR EXCAVATION  
1-800-892-0123  
OR 811

ADT = 2700 (2008)  
3300 (2030) 1% TRUCKS  
POSTED SPEED LIMIT = 30 MPH  
DESIGN SPEED = 30 MPH  
DESIGN DESIGNATION = URBAN COLLECTOR  
CONTRACT NO. 63636



LOCATION MAP  
SCALE: 1" = 500'  
SCHAUMBURG TOWNSHIP  
GROSS LENGTH = 66 FT. = 0.013 MILES  
NET LENGTH = 66 FT. = 0.013 MILES

**PROJECT LOCATED IN THE  
VILLAGE OF SCHAUMBURG**

**WARNING**

**CALL 811  
BEFORE YOU DIG**

DIG NO: A0910982

STATE OF ILLINOIS  
DEPARTMENT OF TRANSPORTATION  
DIVISION OF HIGHWAYS

APPROVED October 25, 2011  
*Steven R. Weinstein*  
STEVEN R. WEINSTOCK, PE  
DIRECTOR OF ENGINEERING / PUBLIC WORKS VILLAGE OF SCHAUMBURG

APPROVED 10/24/2011  
*Daniel Otto*  
SCHAUMBURG PARK DISTRICT

PASSED November 8, 2011  
*Chief Engineer*  
DISTRICT 1 ENGINEER OF LOCAL ROADS AND STREETS

RELEASING FOR BID  
BASED ON LIMITED  
REVIEW November 8, 2011  
*Diana M. O'Keefe*  
DEPUTY DIRECTOR OF HIGHWAYS, REGION 1 ENGINEER

DATE: 10/17/2011

**HAMPTON, LENZINI AND RENWICK, INC.**  
CIVIL ENGINEERS - STRUCTURAL ENGINEERS - LAND SURVEYORS

**HLR**  
380 SHEPARD DRIVE  
ELGIN, ILLINOIS 60123  
847.897.6700 www.hlrengineering.com  
184.000959  
ILLINOIS PROFESSIONAL DESIGN FIRM LS / PE / SE CORPORATION

EXPIRES: 11/30/2011 PROJECT NUMBER: 11.0085.610 DATE: 10/17/11

PROGRAM AND OFFICE ENGINEER: CHARLES F. RIDDLE, P.E. 847-705-4406 SCHAUMBURG, IL

PRINTED BY THE AUTHORITY  
OF THE STATE OF ILLINOIS