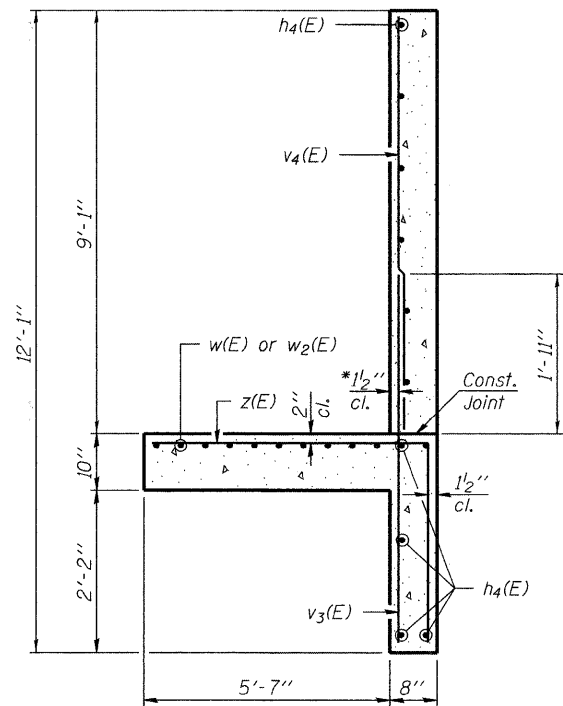


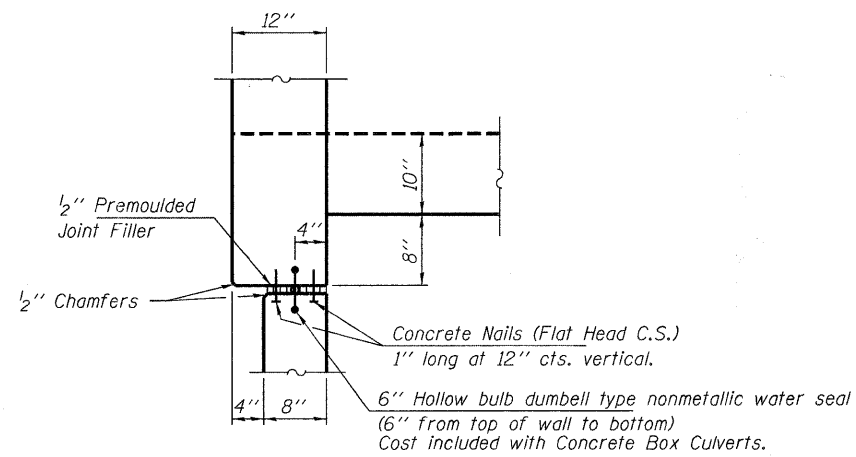
SECTION C-C

*v₄(E) bars shall not be placed more than 1/2" cl. from back face of wingwall.

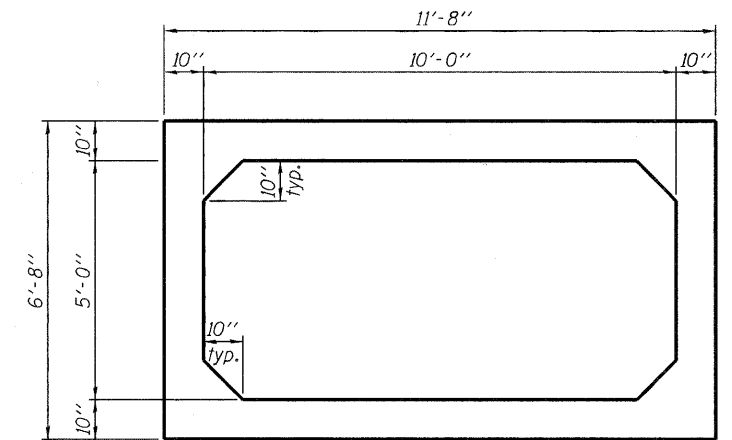


SECTION D-D

*v₄(E) bars shall not be placed more than 1/2" cl. from back face of wingwall.

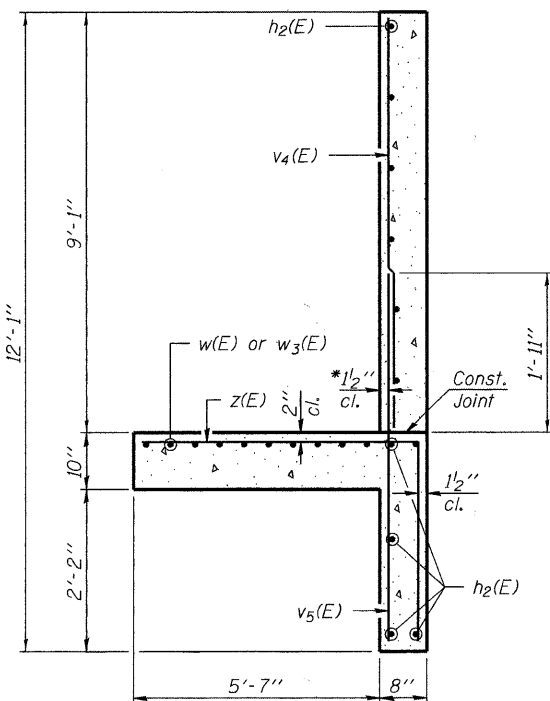


CORNER DETAIL



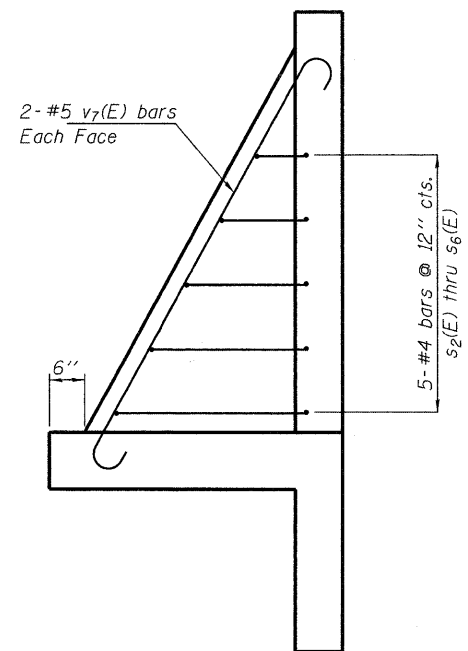
SECTION THRU PRECAST BOX (M273)

$A_{S1} = 0.34 \text{ in}^2$ $A_{S5} = 0.24 \text{ in}^2$
 $A_{S2} = 0.48 \text{ in}^2$ $A_{S6} = 0.24 \text{ in}^2$
 $A_{S3} = 0.29 \text{ in}^2$ $A_{S7} = 0.24 \text{ in}^2$
 $A_{S4} = 0.24 \text{ in}^2$ $A_{S8} = 0.24 \text{ in}^2$

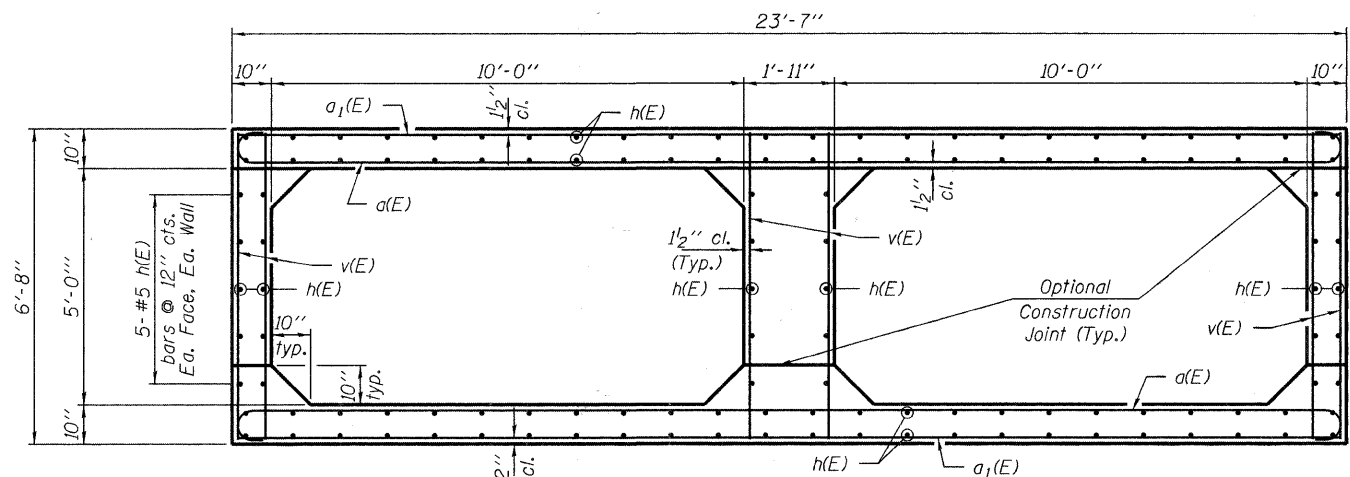


SECTION E-E

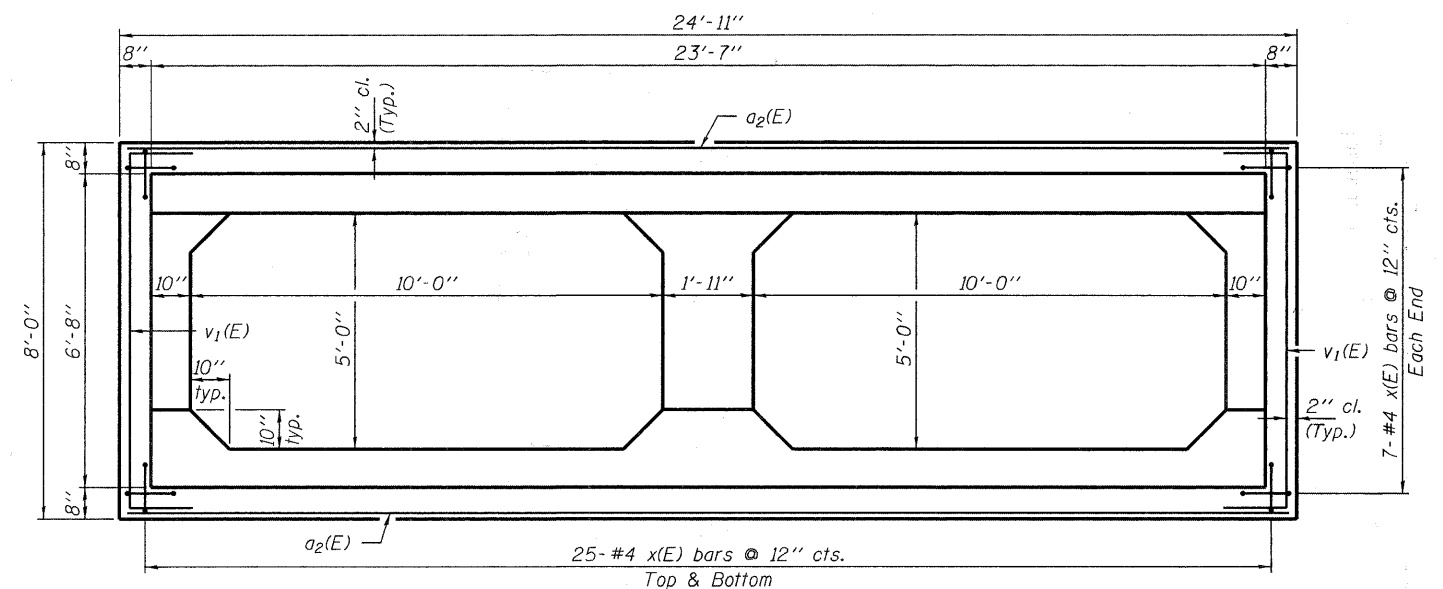
*v₄(E) bars shall not be placed more than 1/2" cl. from back face of wingwall.



SECTION F-F



SECTION A-A



SECTION B-B

FILE NAME *	USER NAME *	DESIGNED - D.W.T.	REVISED -	STATE OF ILLINOIS DEPARTMENT OF TRANSPORTATION	CULVERT DETAILS STRUCTURE NO. 016-6803	F.A.U.	SECTION	COUNTY	TOTAL SHEETS	SHEET NO.	
HAMPTON, LENZINI AND RENWICK, INC. 3088 STEVENSON DRIVE, SUITE 201 SPRINGFIELD, ILLINOIS 62703 ILLINOIS PROFESSIONAL DESIGN FIRM LS / PE / SE CORP. 184.000959	PLOT SCALE =	CHECKED - S.W.M.	REVISED -			2556	08-00094-01-BR	COOK	30	21	
	PLOT DATE = 9/9/2011	DRAWN - D.A.B.	REVISED -			VILLAGE OF SCHAUMBURG CONTRACT NO. 63636					
		CHECKED - S.W.M.	REVISED -			ILLINOIS FED. AID PROJECT					
					SHEET NO. 4 OF 9 SHEETS						