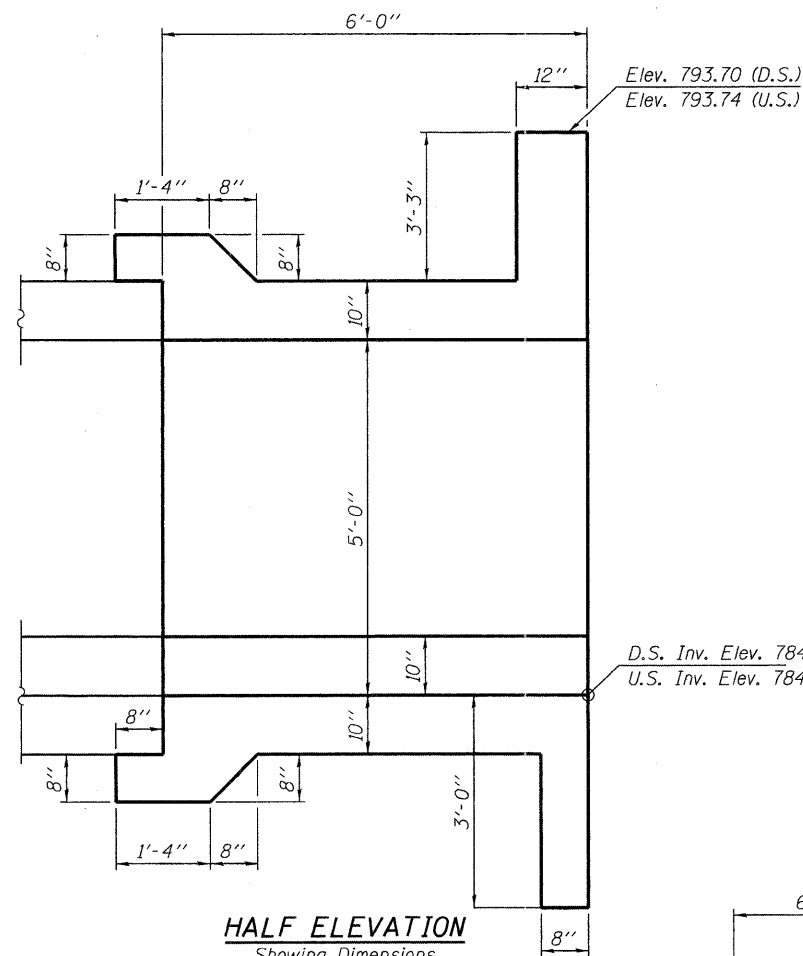
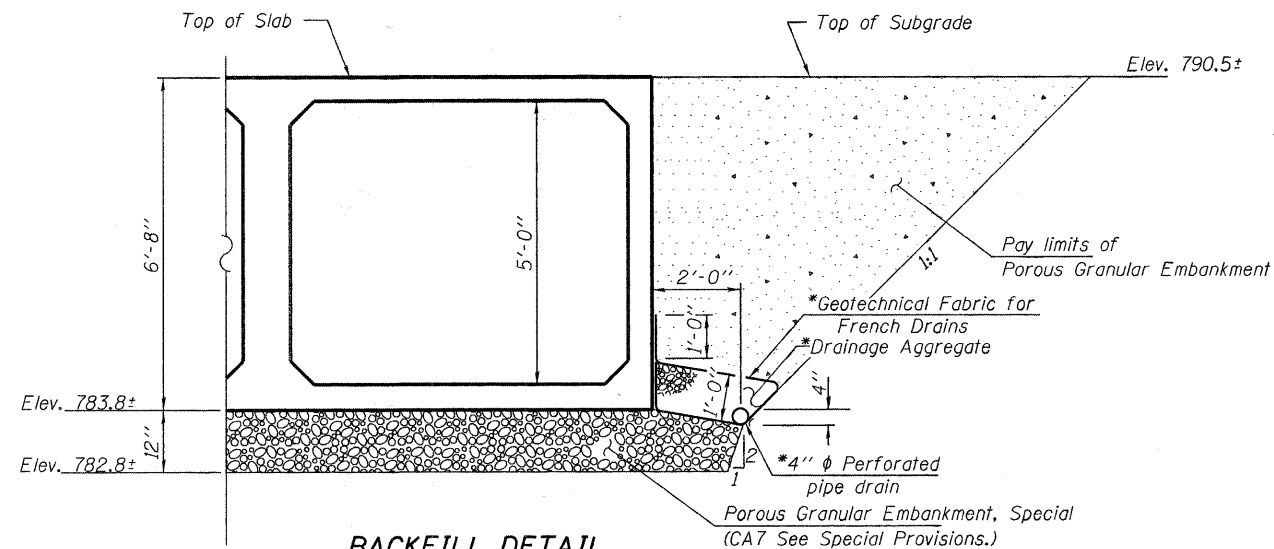


HALF LONG SECTION
Showing Reinforcement
(Typ. Ea. End)

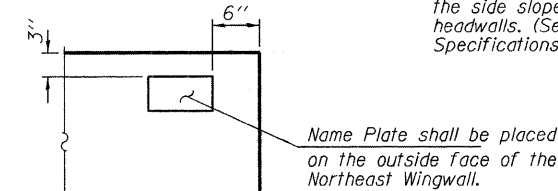


HALF ELEVATION
Showing Dimensions
(Typ. Ea. End)



BACKFILL DETAIL

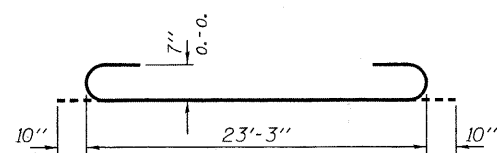
Notes: The Contractor shall place and compact porous granular embankment as shown along the barrel and the back of the wingwalls. The top 1.50' of backfill behind the wingwalls shall be earth embankment.
All drainage system components shall extend to 2'-0" from the end of each wingwall except an outlet pipe shall extend until intersecting with the side slopes. The pipes shall drain into concrete headwalls. (See Article 601.05 of the Standard Specifications and Highway Standard 601101).



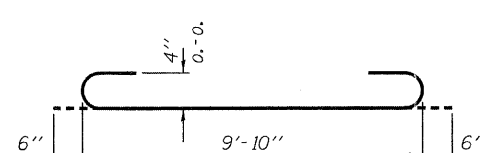
NAME PLATE LOCATION
Northeast Wingwall

BILL OF MATERIAL

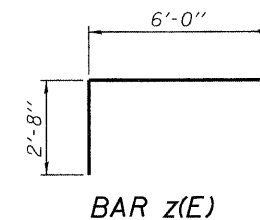
Bar	No.	Size	Length	Shape
a(E)	36	#7	24'-11"	U
a1(E)	36	#7	23'-2"	U
a2(E)	12	#4	24'-8"	—
d(E)	50	#4	4'-5"	L
h(E)	252	#5	5'-8"	—
h1(E)	18	#6	24'-8"	—
h2(E)	24	#4	11'-8"	—
h3(E)	13	#4	14'-2"	—
h4(E)	13	#4	17'-2"	—
s(E)	50	#5	5'-6"	L
s1(E)	50	#5	5'-1"	L
s2(E)	1	#4	6'-10"	L
s3(E)	1	#4	5'-10"	L
s4(E)	1	#4	4'-10"	L
s5(E)	1	#4	3'-10"	L
s6(E)	1	#4	2'-10"	L
v(E)	72	#4	6'-4"	—
v1(E)	12	#4	7'-8"	—
v2(E)	8	#4	11'-6"	—
v3(E)	77	#4	4'-9"	—
v4(E)	77	#4	8'-9"	—
v5(E)	8	#4	4'-6"	L
v6(E)	8	#4	5'-6"	L
v7(E)	2	#5	10'-10"	U
w(E)	36	#5	8'-10"	—
w1(E)	9	#5	14'-2"	—
w2(E)	9	#5	18'-2"	—
w3(E)	18	#5	11'-2"	—
x(E)	128	#4	5'-4"	—
z(E)	86	#7	8'-8"	L



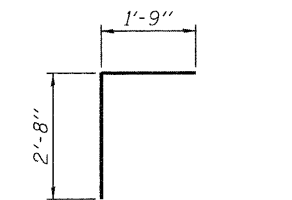
BAR a(E)



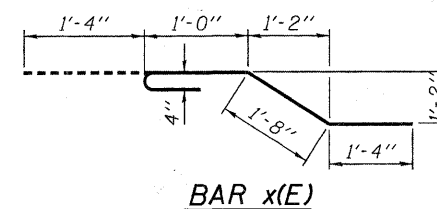
BAR v7(E)



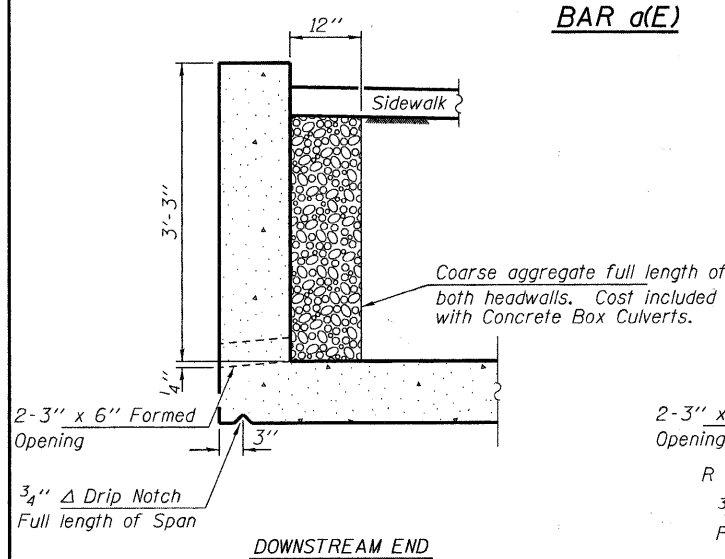
BAR z(E)



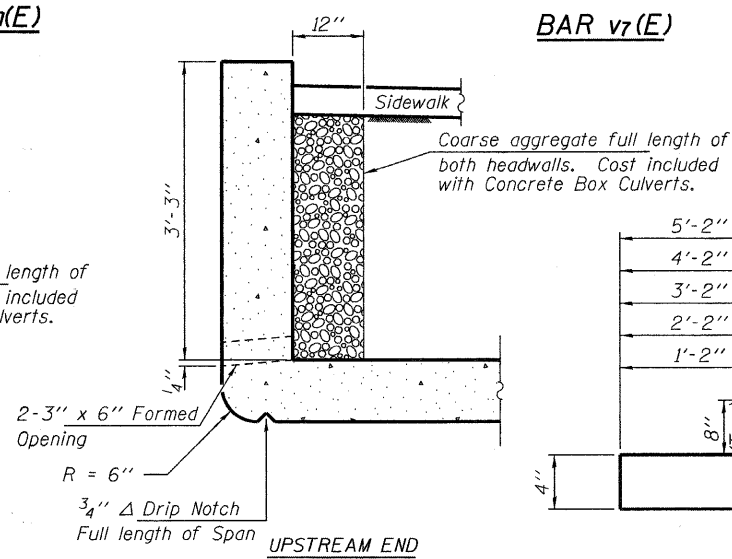
BAR d(E)



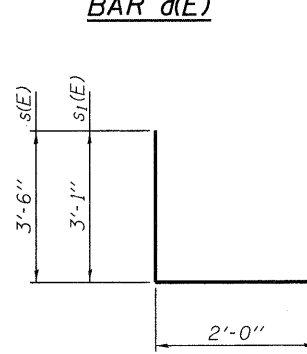
BAR x(E)



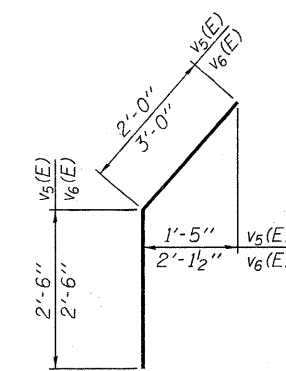
SECTION THRU HEADWALLS
Not To Scale



BARS s2(E) thru s6(E)



BARS s(E) & s1(E)



BARS v5(E) & v6(E)

All reinforcement bars designated (E) shall be epoxy coated.