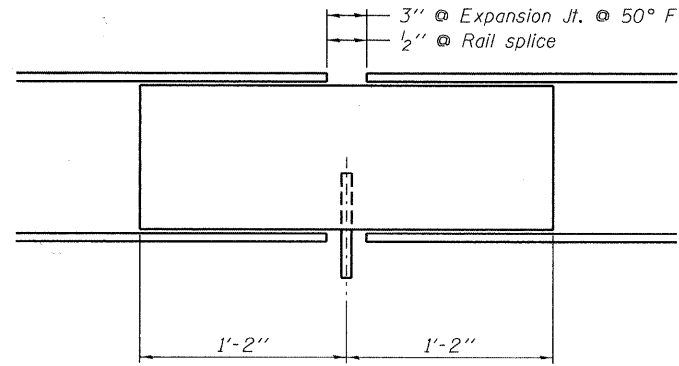


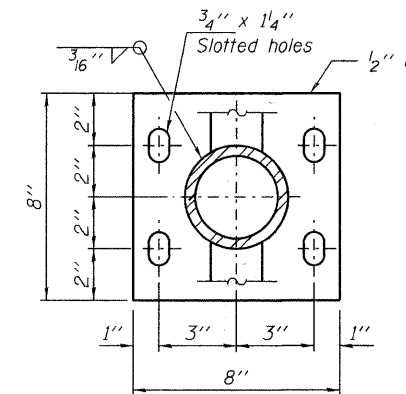
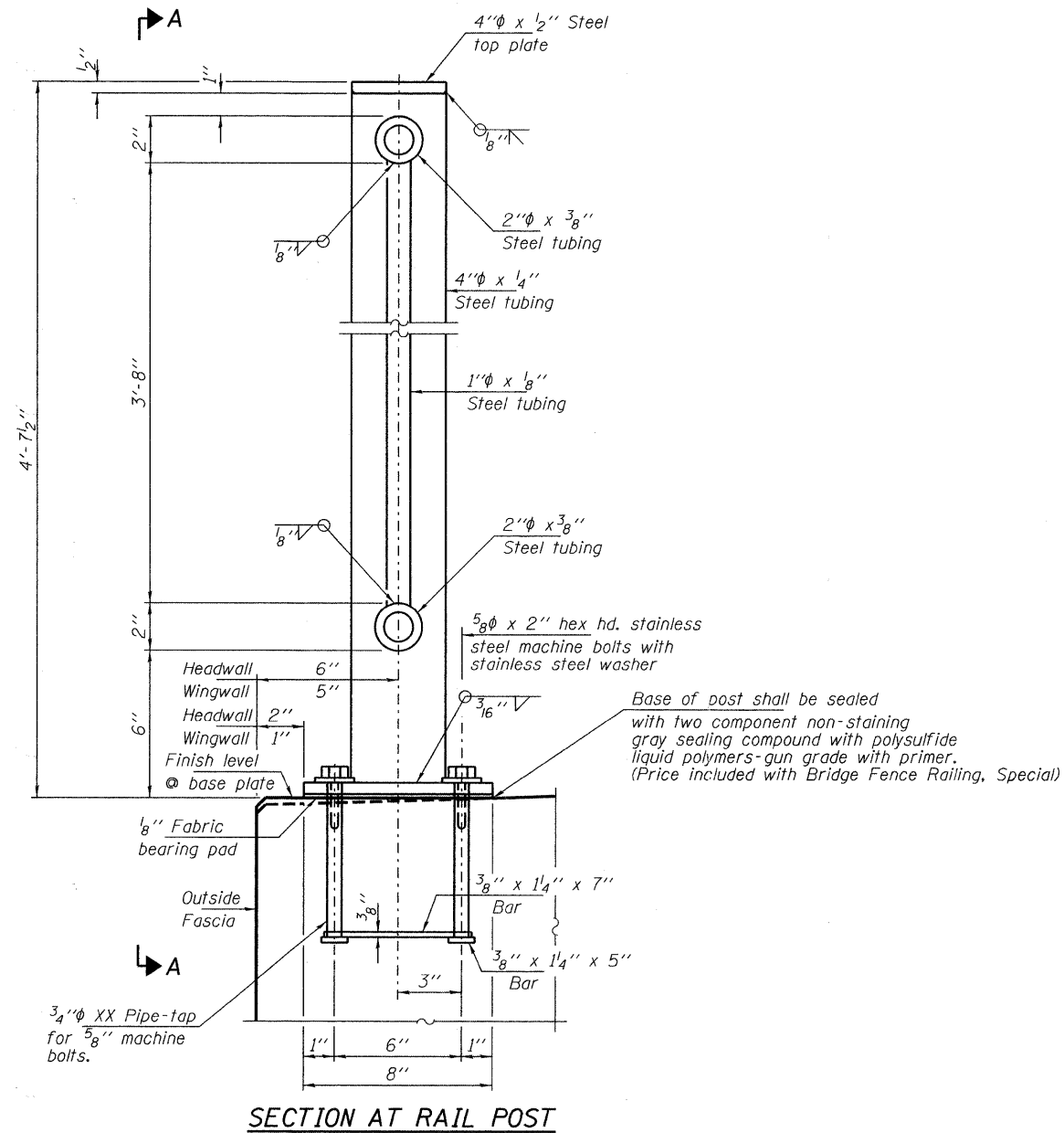
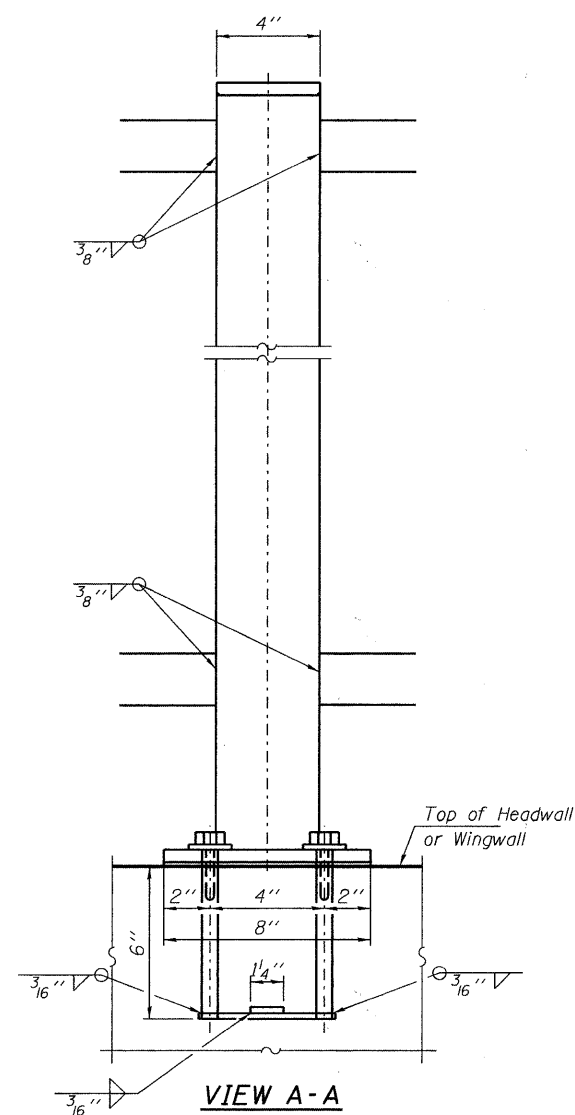
**TOP & BOTTOM RAIL
SPLICE BAR**



RAIL SPLICE

NOTES

All posts shall be vertical.
 All joints in rail shall be spliced per detail.
 Provide 1-1/8" and 2-1/16" Steel shims for 25% of the posts. Rail elements shall be parallel to Grade-high spots will be ground down and low spots shimmed.
 Railing shall be in accordance with the Special Provisions and will be paid for at the contract unit price per foot for Bridge Fence Railing, Special.
 Drilled and grouted anchor bolts may be substituted for the rail anchorage assembly. The anchor bolts shall be approved by the engineer.
 All field drilled holes shall be coated with an approved zinc-rich thermosetting epoxy powder coating Base Coat (gray) and a "no-mar" TGIC polyester powder Top Coat (black) before erection.



BASE PLATE

FILE NAME =	USER NAME =	DESIGNED - D.W.T.	REVISED -	STATE OF ILLINOIS DEPARTMENT OF TRANSPORTATION	RAILING DETAILS STRUCTURE NO. 016-6803	F.A.U.	SECTION	COUNTY	TOTAL SHEETS	SHEET NO.	
HAMPTON, LENZINI AND RENWICK, INC. 3685 STEVENSON DRIVE, SUITE 201 SPRINGFIELD, ILLINOIS 62703	PLOT SCALE =	CHECKED - S.W.M.	REVISED -			2556	08-00094-01-BR	COOK	30	25	
ILR ILLINOIS PROFESSIONAL DESIGN FIRM L3 / P.E. / S.E. CORP. 184-200959	PLOT DATE = 9/9/2011	DRAWN - D.A.B.	REVISED -			VILLAGE OF SCHAUMBURG	CONTRACT NO. 63636				
		CHECKED - S.W.M.	REVISED -			ILLINOIS FED. AID PROJECT					
SHEET NO. 8 OF 9 SHEETS											