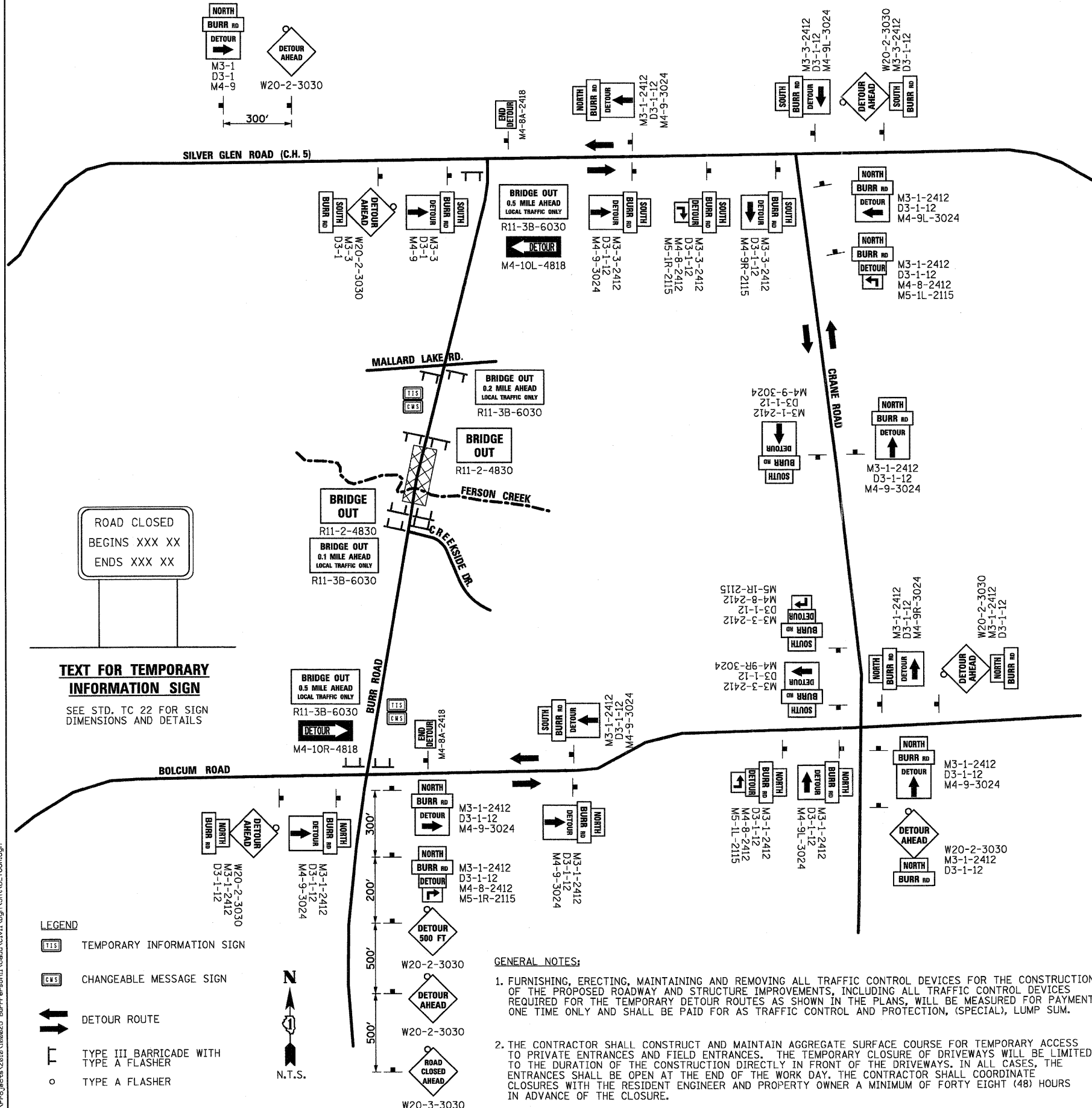
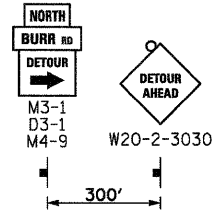


TYPICAL DETOUR SIGN SPACING



TEMPORARY DETOUR DURATION

THE CONTRACT DOCUMENTS WILL ALLOW THE ROADWAY CLOSURE AND TEMPORARY DETOUR DETAILED ON THIS SHEET TO REMAIN IN PLACE UNTIL AUGUST 24, 2012. THE CONTRACTOR WILL BE EXPECTED TO COMPLETE ALL THE PROPOSED WORK RELATED TO THE CONSTRUCTION OF THE PROPOSED BRIDGE AND ROADWAY DURING THIS CLOSURE. THE ROADWAY MUST HAVE THE HMA SURFACE COURSE PLACED AND THE GUARDRAIL INSTALLED BEFORE THE ROADWAY IS OPENED TO TRAFFIC. IF THE SURFACE COURSE AND GUARD RAIL ARE NOT COMPLETE IN THE ALLOWED TIME, ADDITIONAL TRAFFIC CONTROL DEVICES REQUIRED FOR THE COMPLETION OF REMAINING CONSTRUCTION OPERATIONS WILL BE AT THE CONTRACTOR COSTS.

CHANGEABLE MESSAGE SIGN

THE CONTRACTOR SHALL PLACE ELECTRONIC CHANGEABLE MESSAGE SIGNS ON THE NORTH AND SOUTH SIDES OF THE BRIDGE TO WARN THE PUBLIC OF THE PENDING CLOSURE. THE MESSAGE BOARDS WILL NEED TO BE PLACED AND SET OUT FOUR SEVEN (7) DAYS IN ADVANCE OF THE ANTICIPATED FIRST DAY OF CONSTRUCTION. THE SIGNS SHALL REMAIN IN PLACE FOR THE SPECIFIED CONTRACT TIME. THE CONTRACTOR WILL COORDINATE WITH THE RESIDENT ENGINEER ON THE EXACT PLACEMENT OF THE MESSAGE BOARDS AND THE MESSAGE THAT IS TO BE DISPLAYED. THE MESSAGE MAY PERIODICALLY BE CHANGED BY THE TOWNSHIP. THERE WILL BE NO ADDITIONAL COMPENSATION FOR CHANGING OF THE MESSAGE(S). THE MESSAGE BOARDS WILL BE PAID FOR AS CHANGEABLE MESSAGE SIGN, PER CALENDAR DAY FOR EACH MESSAGE SIGN UTILIZED.

TEMPORARY INFORMATION SIGN

THE CONTRACTOR SHALL ERECT TEMPORARY INFORMATION SIGNS ON THE NORTH AND SOUTH SIDE OF THE BRIDGE TO INFORM THE PUBLIC OF THE CONSTRUCTION DURATION. THE CONTRACTOR WILL COORDINATE WITH THE RESIDENT ENGINEER ON THE EXACT PLACEMENT OF THE SIGN. THE SIGN SHALL BE IN PLACE FOR THE ENTIRE DURATION OF THE CONTRACT OR AS DIRECTED BY THE RESIDENT ENGINEER. THE TEMPORARY SIGN WILL BE AS DIMENSIONED ON STD. TC22 EXCEPT THE MESSAGE SHALL BE AS DETAILED ON THE DETOUR PLAN. THE SIGNING, WHICH INCLUDES POST AND MOUNTING, WILL BE PAID AS TEMPORARY INFORMATION SIGNING, PER EACH SIGN ERECTED.

CONTACTS

THE CONTRACTOR SHALL COORDINATE ALL MAINTENANCE OF TRAFFIC OPERATIONS WITH ALL MUNICIPALITIES, TOWNSHIP, AND COUNTY ENTITIES WITHIN THE PROJECT LIMITS. THE FOLLOWING IS THE CONTACT FOR THE ST. CHARLES TOWNSHIP HIGHWAY DEPARTMENT.

- DONALD SCHLOMANN, SUPERINENDENT, C.U.S.D. 303, 630-513-3030
- CARL SCHOEDL, DIRECTOR, KANE CO. DIVISION OF TRANSPORTATION, 630-584-1170
- DONALD BRYANT, DIRECTOR, KANE CO. OFFICE OF EMERGENCY MANAGEMENT, 630-232-5985
- POSTMASTER, ST. CHARLES, 60175, 630-584-2318
- PATRICK PEREZ, KANE CO. SHERIFF, 630-232-6840
- CHRIS MERRIT, CHIEF OF POLICE, SOUTH ELGIN, 847-741-2151
- PATRICK MULLEN, CHIEF, ST. CHARLES FIRE DEPARTMENT, 630-377-4458
- GREG BENSON, CHIEF, FOX RIVER AND COUNTRYSIDE FIRE/RESCUE DISTRICT, 630-584-3473
- RON JOHNSON, HIGHWAY COMMISSIONER, ST. CHARLES TOWNSHIP, 630-584-3496
- DAVE BOESCH, KANE COUNTY DEPARTMENT OF TRANSPORTATION, 630-845-7875

LIMITATIONS OF CONSTRUCTION

THE CONTRACTOR SHALL COORDINATE THE ITEMS OF WORK IN ORDER TO KEEP HAZARDS AND TRAFFIC INCONVENIENCES TO A MINIMUM, AS SPECIFIED BELOW:

1. DURING THE CONSTRUCTION WHEN THE ROADWAY IS NOT CLOSED, CONSTRUCTION OPERATIONS WILL BE CONDUCTED SO ONE LANE IN EACH DIRECTION ON BURR ROAD REMAINS OPEN.
2. THE CONTRACTOR SHALL PROVIDE, ERECT, AND MAINTAIN ALL THE NECESSARY SIGNS, BARRICADES, CONES, DRUMS, AND LIGHTS FOR THE WARNING AND PROTECTION OF TRAFFIC, AS REQUIRED BY SECTIONS 107 AND 701 THROUGH 703 OF THE STANDARD SPECIFICATIONS, AND AS MODIFIED.
3. THE CONTRACTOR SHALL FURNISH AND ERECT "ROAD CONSTRUCTION AHEAD" SIGNS (W20-1 (O)-48) AT BOTH ENDS OF THE PROJECT AND AT ALL SIDE ROADS WITHIN THE LIMITS OF THIS SECTION WHEN WORKING IN THE VICINITY OF THE SIDE ROAD INTERSECTION.

OFF-PEAK HOURS

FOR CONSTRUCTION OPERATION OUTSIDE THE DESIGNATED DETOUR PERIOD, THE "OFF-PEAK" HOURS ARE DEFINED AS THE DAYTIME HOURS FROM 9:00 A.M. TO 3:00 P.M. AND NIGHT TIME HOURS FROM 9:00 P.M. TO 6:00 A.M., MONDAY THROUGH FRIDAY.

KEEPING ROADS OPEN TO TRAFFIC

THE CONTRACTOR SHALL SCHEDULE HIS/HER SEQUENCE OF OPERATIONS TO PERMIT THE CONSTRUCTION OF THIS SECTION WITH THE LEAST INCONVENIENCE TO THE TRAVELING PUBLIC. THE CONTRACTOR'S SCHEDULE SHALL REFLECT THE FOLLOWING REQUIREMENTS AND SEQUENCE OF CONSTRUCTION. THESE REQUIREMENTS FOLLOW THE SUGGESTED TRAFFIC CONTROL PLAN INCLUDED IN THE DRAWINGS.

1. BURR ROAD MAY BE COMPLETELY CLOSED TO TRAFFIC FOR THE DURATION SPECIFIED IN THE CONTRACT DOCUMENTS.
2. ACCESS TO FIELD AND PRIVATE ENTRANCES SHALL REMAIN OPEN AT ALL TIMES. ON PROPERTIES THAT HAVE MORE THAN ONE ACCESS, ONE ENTRANCE MAY BE TEMPORARILY CLOSED. HOWEVER, VEHICULAR ACCESS MUST REMAIN OPEN TO TRAFFIC FOR THE OPPOSITE ENTRANCE. WHEN IT IS NECESSARY TO CLOSE AN ENTRANCE, THE CONTRACTOR SHALL COORDINATE WITH THE RESIDENT ENGINEER AND THE PROPERTY OWNER FORTY-EIGHT (48) HOURS IN ADVANCE OF THE WORK. IN ALL CASES, THE ENTRANCE SHALL BE OPEN AT THE END OF THE WORKDAY.

TRAILER MOUNTED ARROW BOARD

UNLESS OTHERWISE REQUIRED BY A SPECIFIED TRAFFIC CONTROL STANDARD, THE USE OF A TRAILER MOUNTED ARROW BOARD(S) ARE NOT ANTICIPATED FOR THIS PROJECT.

SEQUENCE OF CONSTRUCTION

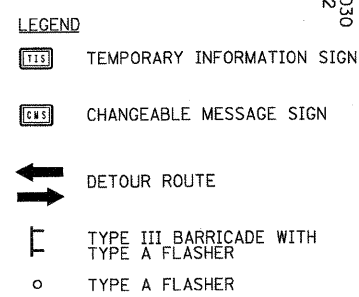
IN GENERAL, THE STAGING OF CONSTRUCTION FOR THIS SECTION SHALL BE AS FOLLOWS:

- MAJOR WORK ITEMS - STAGE 1 BURR ROAD**
- COORDINATE UTILITY RELOCATES.
 - SET UP CHANGEABLE MESSAGE BOARD.
 - SET UP DETOUR AS DETAILED IN THE PLANS.
 - SET UP TEMPORARY EROSION CONTROL MEASURES.
 - REMOVE EXISTING VEGETATION, PAVEMENTS, AND BRIDGE STRUCTURE (SEE REMOVAL PLANS SHEETS).
 - CONSTRUCT THE PROPOSED BRIDGE, SUBGRADE, AGGREGATE BASE COURSES, PAVEMENTS (TO SURFACE), AND UNDERDRAINS.
 - CONSTRUCT GUARDRAILS AND SIGNAGE.

MAJOR WORK ITEMS - STAGE 2 - RESTORATION

- THESE ITEMS MAY TAKE PLACE AFTER THE ROADWAY IS OPEN TO TRAFFIC.
- PLACE PERMANENT RESTORATION.
 - PLACE PERMANENT PAVEMENT MARKINGS.
 - FINALIZE PUNCH LIST AND SITE CLEANUP.

TEXT FOR TEMPORARY INFORMATION SIGN
SEE STD. TC 22 FOR SIGN DIMENSIONS AND DETAILS



GENERAL NOTES:

1. FURNISHING, ERECTING, MAINTAINING AND REMOVING ALL TRAFFIC CONTROL DEVICES FOR THE CONSTRUCTION OF THE PROPOSED ROADWAY AND STRUCTURE IMPROVEMENTS, INCLUDING ALL TRAFFIC CONTROL DEVICES REQUIRED FOR THE TEMPORARY DETOUR ROUTES AS SHOWN IN THE PLANS, WILL BE MEASURED FOR PAYMENT ONE TIME ONLY AND SHALL BE PAID FOR AS TRAFFIC CONTROL AND PROTECTION, (SPECIAL), LUMP SUM.
2. THE CONTRACTOR SHALL CONSTRUCT AND MAINTAIN AGGREGATE SURFACE COURSE FOR TEMPORARY ACCESS TO PRIVATE ENTRANCES AND FIELD ENTRANCES. THE TEMPORARY CLOSURE OF DRIVEWAYS WILL BE LIMITED TO THE DURATION OF THE CONSTRUCTION DIRECTLY IN FRONT OF THE DRIVEWAYS. IN ALL CASES, THE ENTRANCES SHALL BE OPEN AT THE END OF THE WORK DAY. THE CONTRACTOR SHALL COORDINATE CLOSURES WITH THE RESIDENT ENGINEER AND PROPERTY OWNER A MINIMUM OF FORTY EIGHT (48) HOURS IN ADVANCE OF THE CLOSURE.

FILE NAME = MAPProjects\2010\100225 BurrFerson\Drawings\Signs\DETOUR.dgn

WILLS BURKE KELSEY ASSOCIATES LTD.
116 West Main Street, Suite 201
St. Charles, Illinois 60174
(630) 445-1755

USER NAME = #USER#	DESIGNED - KMA	REVISED -
PLOT SCALE =	DRAWN - NDP	REVISED -
PLOT DATE = 10/19/2011	CHECKED - SBP	REVISED -
	DATE - 10/24/11	REVISED -

**STATE OF ILLINOIS
DEPARTMENT OF TRANSPORTATION**

MAINTENANCE OF TRAFFIC DETOUR PLAN	
SCALE:	SHEET NO. 17 OF 76 SHEETS STA. TO STA.

TOWNSHIP RTE.	SECTION	COUNTY	TOTAL SHEETS	SHEET NO.
194	08-14117-00-BR	KANE	76	17
FED. ROAD DIST. NO. [ILLINOIS] FED. AID PROJECT			CONTRACT NO. 63645	