

DEMOLITION PLAN NOTES

1. ALL MAILBOXES WITHIN PROJECT SHALL BE PROTECTED DURING CONSTRUCTION.
2. ALL FIRE HYDRANTS SHOWN SHALL BE PROTECTED DURING CONSTRUCTION.
3. CONTRACTOR SHALL PROVIDE AND MAINTAIN POSITIVE DRAINAGE AWAY FROM THE PROPOSED AGGREGATE SUBGRADE DURING CONSTRUCTION. THIS WORK IS CONSIDERED INCIDENTAL TO THE CONTRACT.



GRAPHIC SCALE

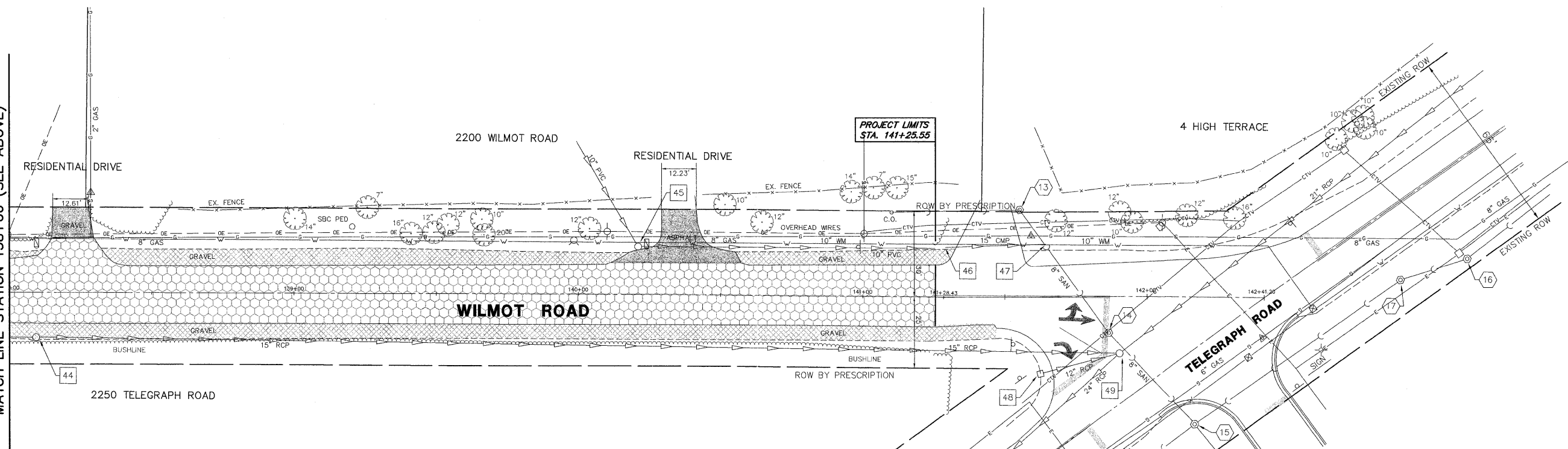
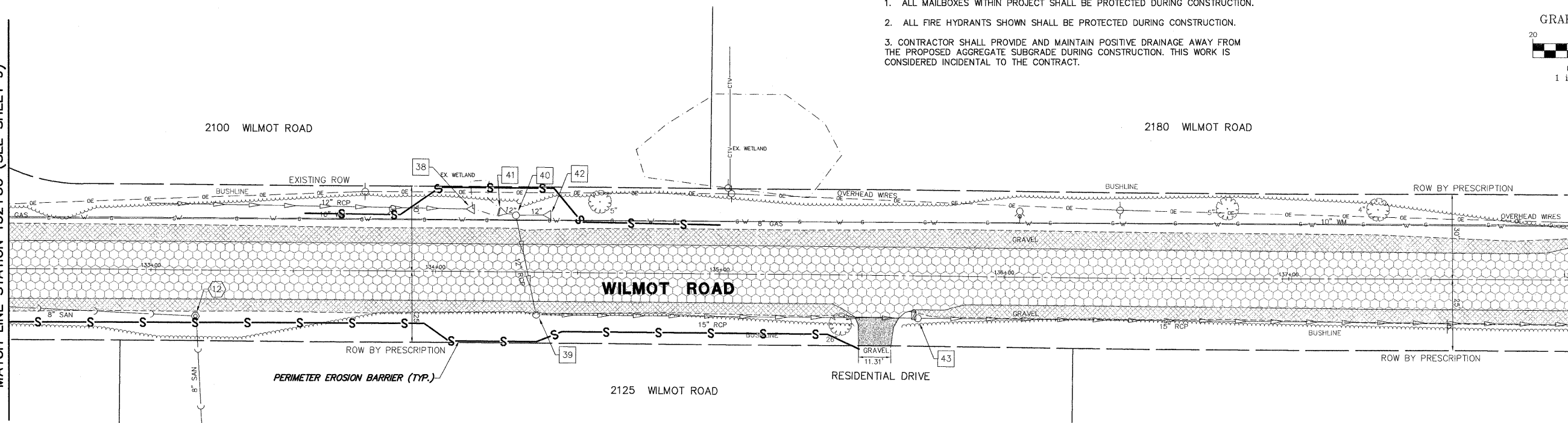


(IN FEET)
1 inch = 20 ft.

MATCH LINE STATION 132+50 (SEE SHEET 9)

MATCH LINE STATION 138+00 (SEE ABOVE)

MATCH LINE STATION 138+00 (SEE BELOW)



DEMOLITION CONDITIONS LEGEND

- HOT-MIX ASPHALT SURFACE REMOVAL, 2' 4"
- DRIVEWAY PAVEMENT REMOVAL
- BRICK DRIVEWAY REMOVAL & REPLACEMENT (SPECIAL)
- EARTH EXCAVATION
- STORM STRUCTURE TO BE REMOVED
- STORM SEWER TO BE REMOVED
- PERIMETER EROSION BARRIER

VILLAGE BENCHMARK:
BRASS DISC ON 4"x4" POST
LOCATED AT VILLAGE HALL,
2275 TELEGRAPH ROAD.
ELEVATION=682.23

FILE NAME = 8101-055 PR4.DWG	USER NAME = GW3	DESIGNED - DJG	REVISED - 10.14.2011	STATE OF ILLINOIS DEPARTMENT OF TRANSPORTATION	DEMOLITION PLAN			FAJ RTE 2718	SECTION 11-00012-00-RS	COUNTY LAKE	TOTAL SHEETS 40	SHEET NO. 10	
PLOT SCALE = 1:1		DRAWN - GW3	REVISED - 10.28.2011		SCALE 1"=20'	SHEET NO. 10 OF 40 SHEETS	STA. 132+50 TO STA. 141+25.55	CONTRACT #:		63646			
PLOT DATE = 8/24/2011		CHECKED - DJG	REVISED -		ILLINOIS FED. AID PROJECT								
		DATE - 08.24.2011	REVISED -										