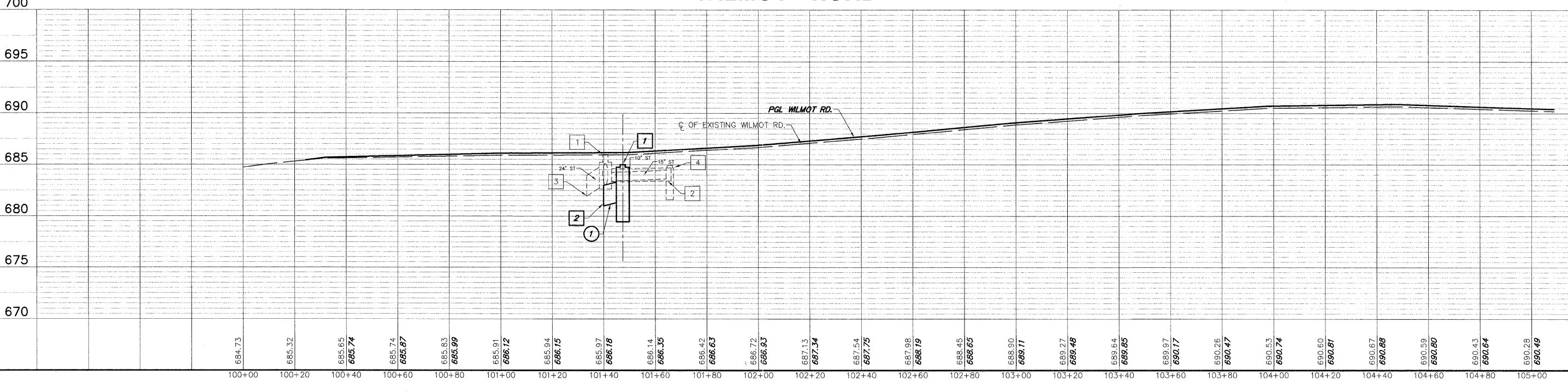
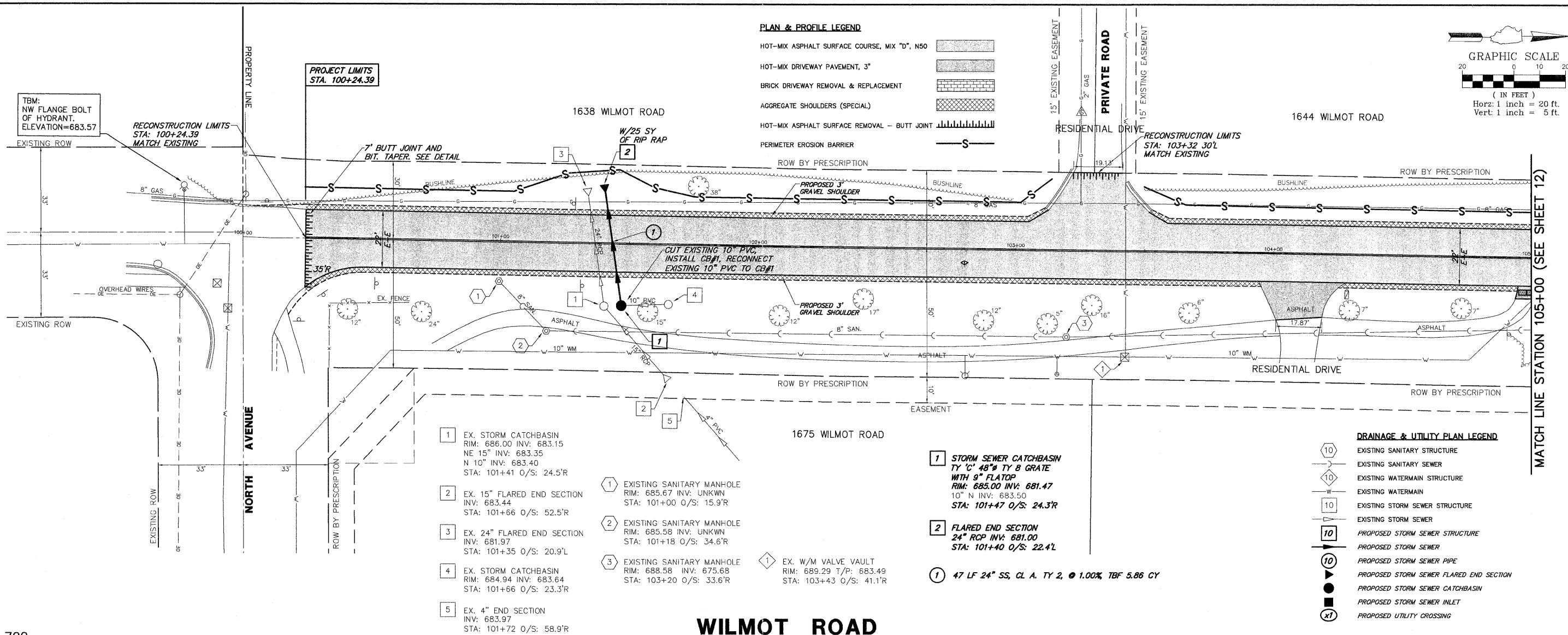


PLAN & PROFILE LEGEND

- HOT-MIX ASPHALT SURFACE COURSE, MIX "D", N50
- HOT-MIX DRIVEWAY PAVEMENT, 3"
- BRICK DRIVEWAY REMOVAL & REPLACEMENT
- AGGREGATE SHOULDERS (SPECIAL)
- HOT-MIX ASPHALT SURFACE REMOVAL - BUTT JOINT
- PERIMETER EROSION BARRIER

DRAINAGE & UTILITY PLAN LEGEND

- EXISTING SANITARY STRUCTURE
- EXISTING SANITARY SEWER
- EXISTING WATERMAIN STRUCTURE
- EXISTING WATERMAIN
- EXISTING STORM SEWER STRUCTURE
- EXISTING STORM SEWER
- PROPOSED STORM SEWER STRUCTURE
- PROPOSED STORM SEWER
- PROPOSED STORM SEWER PIPE
- PROPOSED STORM SEWER FLARED END SECTION
- PROPOSED STORM SEWER CATCHBASIN
- PROPOSED STORM SEWER INLET
- PROPOSED UTILITY CROSSING



- 1 EX. STORM CATCHBASIN
RIM: 686.00 INV: 683.15
NE 15" INV: 683.35
N 10" INV: 683.40
STA: 101+41 O/S: 24.5'R
- 2 EX. 15" FLARED END SECTION
INV: 683.44
STA: 101+66 O/S: 52.5'R
- 3 EX. 24" FLARED END SECTION
INV: 681.97
STA: 101+35 O/S: 20.9'L
- 4 EX. STORM CATCHBASIN
RIM: 684.94 INV: 683.64
STA: 101+66 O/S: 23.3'R
- 5 EX. 4" END SECTION
INV: 683.97
STA: 101+72 O/S: 58.9'R
- 1 EXISTING SANITARY MAN-HOLE
RIM: 685.67 INV: UNKWN
STA: 101+00 O/S: 15.9'R
- 2 EXISTING SANITARY MANHOLE
RIM: 685.58 INV: UNKWN
STA: 101+18 O/S: 34.6'R
- 3 EXISTING SANITARY MANHOLE
RIM: 688.58 INV: 675.68
STA: 103+20 O/S: 33.6'R
- 1 EX. W/M VALVE VAULT
RIM: 689.29 T/P: 683.49
STA: 103+43 O/S: 41.1'R
- 1 STORM SEWER CATCHBASIN
TY "C" 48" TY 8 GRATE
WITH 9" FLATOP
RIM: 685.00 INV: 681.47
10" N INV: 683.50
STA: 101+47 O/S: 24.3'R
- 2 FLARED END SECTION
24" RCP INV: 681.00
STA: 101+40 O/S: 22.4'L
- 1 47 LF 24" SS, CL. A, TY 2, @ 1.00%, TBF 5.86 CY

FILE NAME = 8101-055 PR4.DWG	USER NAME = GW3	DESIGNED - DJG	REVISED - 10.14.2011	STATE OF ILLINOIS DEPARTMENT OF TRANSPORTATION	PROPOSED PLAN & PROFILE			FALI RTE = 2718	SECTION = 11-00012-00-RS	COUNTY = LAKE	TOTAL SHEETS = 40	SHEET NO. = 11
PLOT SCALE = 1:1	DESIGNED - DJG	REVISED - 10.28.2011	SCALE = 1"=20'		SHEET NO. 11 OF 40 SHEETS			CONTRACT # = 63646	ILLINOIS FED. AID PROJECT			
PLOT DATE = 8/24/2011	DATE = 08.24.2011	REVISED -	STA. 100+00 TO STA. 105+00									