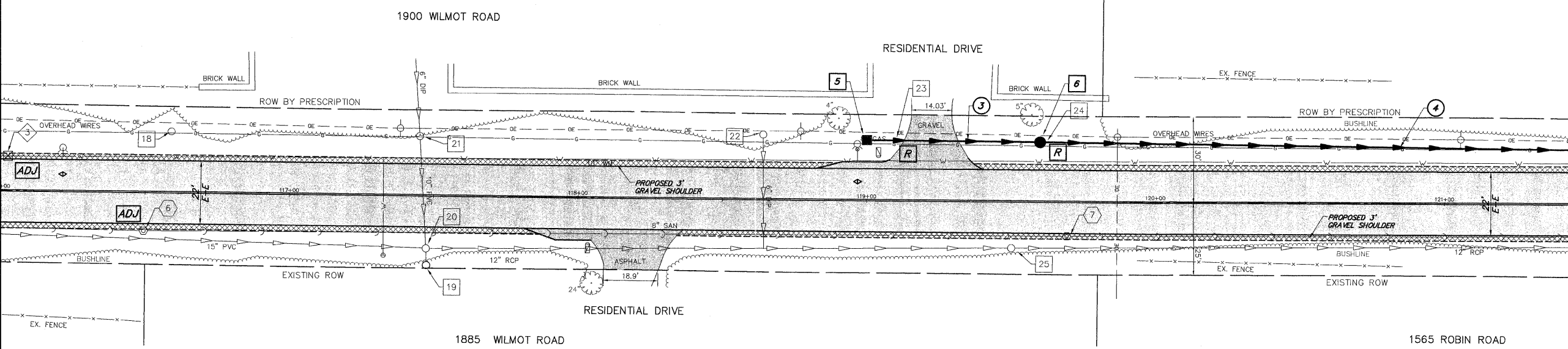


MATCH LINE STATION 116+00 (SEE SHEET 13)

MATCH LINE STATION 121+50 (SEE SHEET 15)



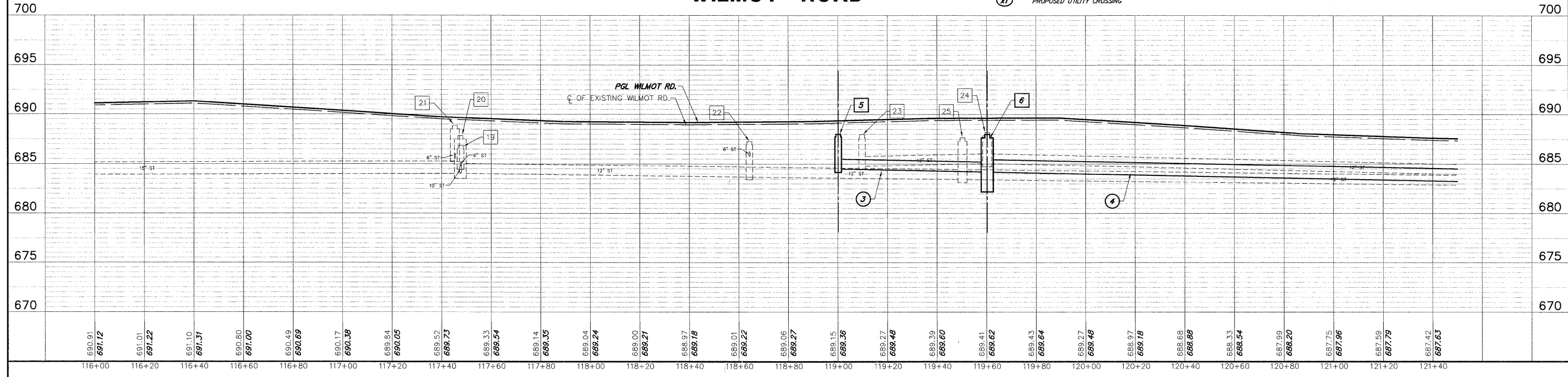
- 18 EX. STORM CATCHBASIN
RIM: 690.68 BTM: 685.33
STA: 116+59 O/S: 21.6'L
- 19 EX. STORM INLET
RIM: 686.87 INV: 684.77
STA: 117+47 O/S: 23.9'R
- 20 EX. STORM CATCHBASIN
RIM: 687.85 INV: 684.05
STA: 117+47 O/S: 18.1'R
- 21 EX. STORM CATCHBASIN
RIM: 688.87 INV: 685.57
STA: 117+45 O/S: 20.9'L
- 22 EX. STORM CATCHBASIN
RIM: 687.29 INV: 685.79
STA: 118+64 O/S: 22.8'L
- 23 EX. STORM CATCHBASIN
RIM: 687.99 INV: 684.79
STA: 119+10 O/S: 21.2'L
TO BE REMOVED
- 24 EX. STORM CATCHBASIN
RIM: 688.21 INV: 685.06
STA: 119+60 O/S: 20.9'L
TO BE REMOVED
- 25 EX. STORM CATCHBASIN
RIM: 687.67 INV: 683.46
STA: 119+50 O/S: 15.9'R
- 6 EXISTING SANITARY MANHOLE
RIM: 690.52 INV: 676.97
STA: 116.50 O/S: 13.2'R
TO BE ADJUSTED
- 7 EXISTING SANITARY MANHOLE
RIM: 689.11 INV: 675.71
STA: 119+69 O/S: 11.8'R
- 3 EX. W/M VALVE VAULT
RIM: 690.77 T/P: 685.62
STA: 116+02 O/S: 12.1'L
TO BE ADJUSTED

- 5 **STORM SEWER INLET**
TY 'A' 24" TY 'B' GRATE
RIM: 688.00 INV: 684.51
STA: 119+00 O/S: 21.2'L
- 6 **STORM SEWER CATCHBASIN**
TY 'C' 48" TY 'B' GRATE
WITH 9" FLAT TOP
RIM: 688.00 INV: 684.21
STA: 119+60 O/S: 20.9'L
- 3 **60 LF 12" SS, CL. B. TY 2, @ 0.50%, TBF 5.79 CY**
- 4 **289 LF 15" SS, CL. B. TY 2, @ 0.50%, TBF 0 CY**

- DRAINAGE & UTILITY PLAN LEGEND**
- 10 EXISTING SANITARY STRUCTURE
 - 10 EXISTING SANITARY SEWER
 - 10 EXISTING WATERMAIN STRUCTURE
 - 10 EXISTING WATERMAIN
 - 10 EXISTING STORM SEWER STRUCTURE
 - 10 EXISTING STORM SEWER
 - 10 PROPOSED STORM SEWER STRUCTURE
 - 10 PROPOSED STORM SEWER
 - 10 PROPOSED STORM SEWER PIPE
 - 10 PROPOSED STORM SEWER FLARED END SECTION
 - 10 PROPOSED STORM SEWER CATCHBASIN
 - 10 PROPOSED STORM SEWER INLET
 - x1 PROPOSED UTILITY CROSSING

- PLAN & PROFILE LEGEND**
- HOT-MIX ASPHALT SURFACE COURSE, MIX "D", N50
 - HOT-MIX DRIVEWAY PAVEMENT, 3"
 - BRICK DRIVEWAY REMOVAL & REPLACEMENT
 - AGGREGATE SHOULDERS (SPECIAL)
 - HOT-MIX ASPHALT SURFACE REMOVAL - BUTT JOINT
 - PERIMETER EROSION BARRIER

WILMOT ROAD



FILE NAME = 8101-055 PR4.DWG	USER NAME = GW3	DESIGNED - DJG	REVISED - 10.14.2011	STATE OF ILLINOIS DEPARTMENT OF TRANSPORTATION	PROPOSED PLAN & PROFILE			FAU RTE 2718	SECTION 11-00012-00-RS	COUNTY LAKE	TOTAL SHEETS 40	SHEET NO. 14
PLOT SCALE = 1:1		DRAWN - GW3	REVISED - 10.28.2011		SCALE: 1"=20'			SHEET NO. 14 OF 40 SHEETS		CONTRACT #: 63646		
PLOT DATE = 8/24/2011		CHECKED - DJG	REVISED -		STA. 116+00 TO STA. 121+50			ILLINOIS FED. AID PROJECT				
		DATE - 08.24.2011	REVISED -									