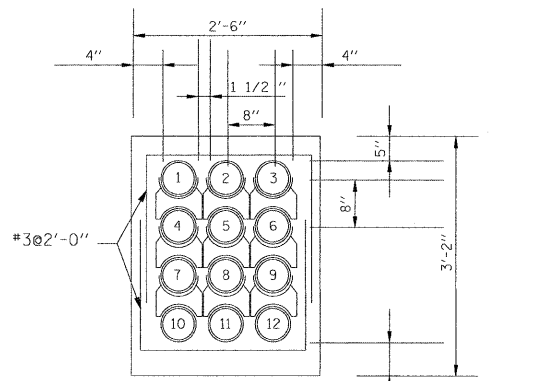
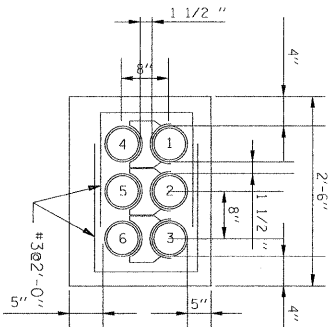


DATE: \_\_\_\_\_  
 BY: \_\_\_\_\_  
 PLAN: \_\_\_\_\_  
 REVISIONS: \_\_\_\_\_  
 CHECKED: \_\_\_\_\_  
 ALIGNED: \_\_\_\_\_  
 NOTE BOOK NO.: \_\_\_\_\_  
 CADD FILE NAME: \_\_\_\_\_

DATE: \_\_\_\_\_  
 BY: \_\_\_\_\_  
 PROFILE: \_\_\_\_\_  
 REVISIONS: \_\_\_\_\_  
 CHECKED: \_\_\_\_\_  
 GRADES: \_\_\_\_\_  
 NOTE BOOK NO.: \_\_\_\_\_  
 PROFILE NOTATIONS: \_\_\_\_\_

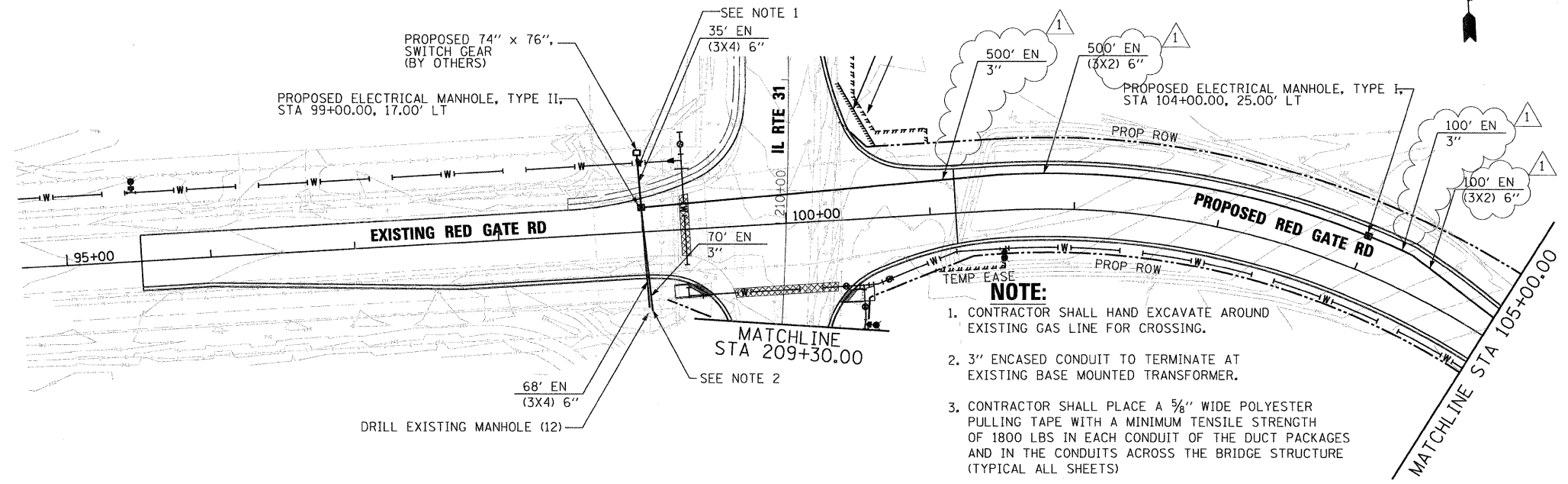


**3 X 4 ELECTRICAL DUCT BANK**



**3 X 2 ELECTRICAL DUCT BANK**

1 REVISED 01/06/2012



- NOTE:**
- CONTRACTOR SHALL HAND EXCAVATE AROUND EXISTING GAS LINE FOR CROSSING.
  - 3" ENCASED CONDUIT TO TERMINATE AT EXISTING BASE MOUNTED TRANSFORMER.
  - CONTRACTOR SHALL PLACE A 5/8" WIDE POLYESTER PULLING TAPE WITH A MINIMUM TENSILE STRENGTH OF 1800 LBS IN EACH CONDUIT OF THE DUCT PACKAGES AND IN THE CONDUITS ACROSS THE BRIDGE STRUCTURE (TYPICAL ALL SHEETS)
  - CONTRACTOR SHALL HAND DIG AROUND ALL EXISTING UTILITIES
  - FOR WATERMAIN DEPTHS AND LOCATIONS, SEE PROPOSED WATERMAIN PLANS.



FILE NAME = ...RedGate\_580Dist\_PP\_1.dgn  
 USER NAME = tblank  
 PLOT DATE = 1/4/2012

DESIGNED - BC  
 DRAWN - BC  
 CHECKED - MPM  
 DATE - 10/23/2011

REVISED - GHT  
 REVISED -  
 REVISED -  
 REVISED -



CITY OF ST. CHARLES

**ELECTRICAL DISTRIBUTION PLAN & PROFILE**  
**RED GATE ROAD**

SCALE: 1"=50' SHEET NO. 1 OF 5 SHEETS STA. TO STA.

F.A. RTE.	SECTION	COUNTY	TOTAL SHEETS	SHEET NO.
	04-00092-00-BR	KANE	440	182
CONTRACT NO. 63650			ILLINOIS FED. AID PROJECT	