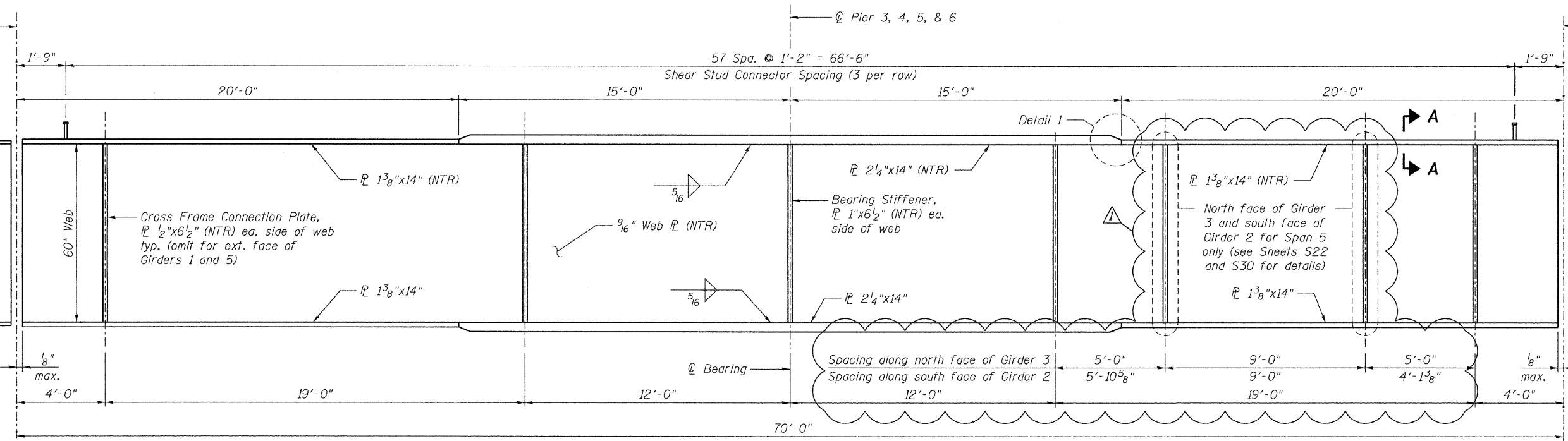
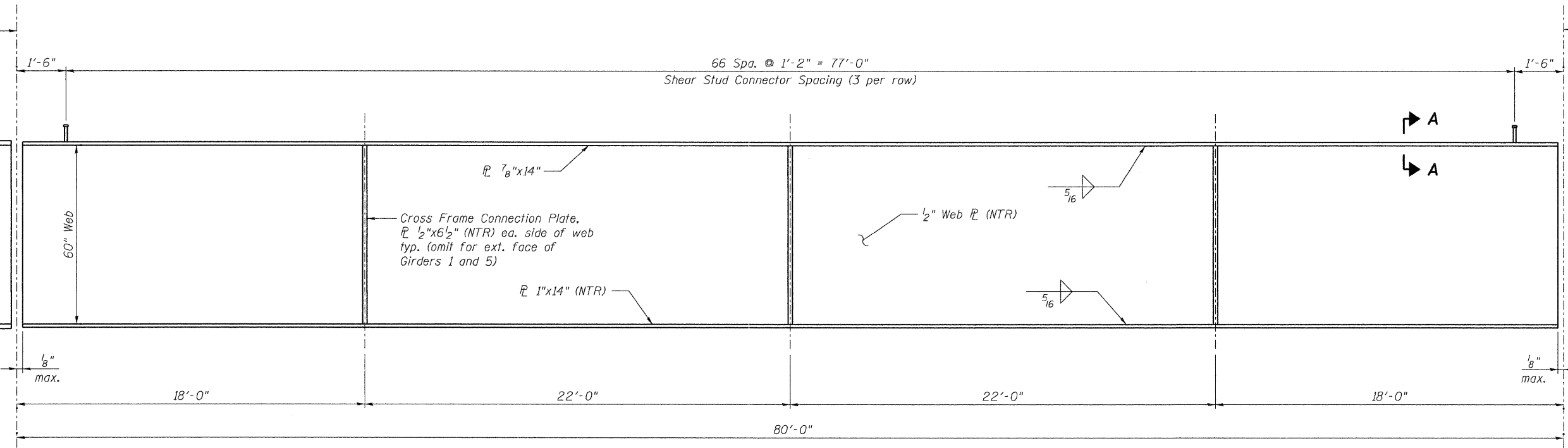


Field Splice, see details on Sheet S31

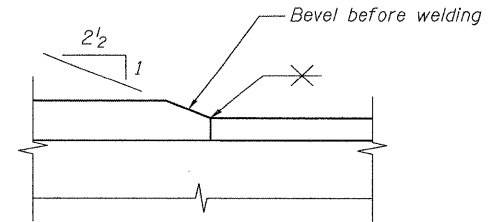


ELEVATION - GIRDER A
(Looking North, 20 Required)

Field Splice, see details on Sheet S31



ELEVATION - GIRDER B
(Looking North, 25 Required)



DETAIL 1
(Typ.)

- NOTES:**
- All flange plates, web plates, bearing stiffeners, and cross frame connection plates shall be AASHTO M270 Grade 50 steel.
 - Load carrying components designated "NTR" shall conform to the Supplemental Requirements for Notch Toughness, Zone 2.
 - Work this sheet with Sheets S22 thru S23 and S25 thru S27.
 - See Sheet S30 for Section A-A.

benesch
engineers · scientists · planners

Alfred Benesch & Company
205 North Michigan Avenue, Suite 2400
Chicago, Illinois 60601
312-565-0450 Job No. 10092

FILE NAME = 0456024_024_PlateGirder1.dgn	USER NAME = akaeschall	DESIGNED - MFH	REVISED - Δ ADDENDUM 1/6/2012
	PLOT SCALE =	CHECKED - AJK	REVISED -
	PLOT DATE = 1/5/2012	DRAWN - RMG	REVISED -
		CHECKED - AJK	REVISED -



CITY OF ST. CHARLES

STEEL PLATE GIRDER ELEVATION (1 OF 4)
STRUCTURE NO. 045-6024 RED GATE ROAD OVER THE FOX RIVER

SHEET NO. S24 OF 556 SHEETS

F.A.I. RTE.	SECTION	COUNTY	TOTAL SHEETS	SHEET NO.
	04-00092-00-BR	KANE	440	246
CONTRACT NO. 63650			ILLINOIS FED. AID PROJECT	

x:\100000s\10092\engineer\redgatephase1\groverfoxriver\final\plans\0456024_024_PlateGirder1.dgn 10:13:36 AM 1/5/2012