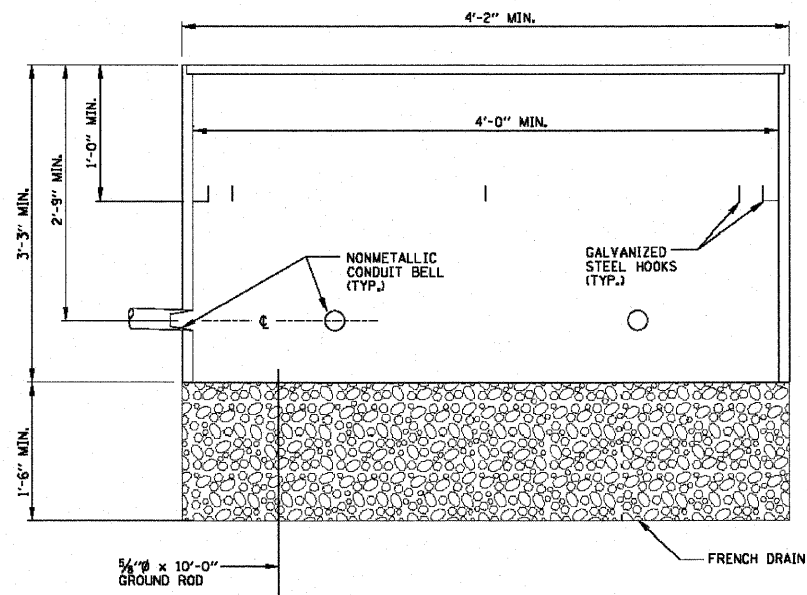
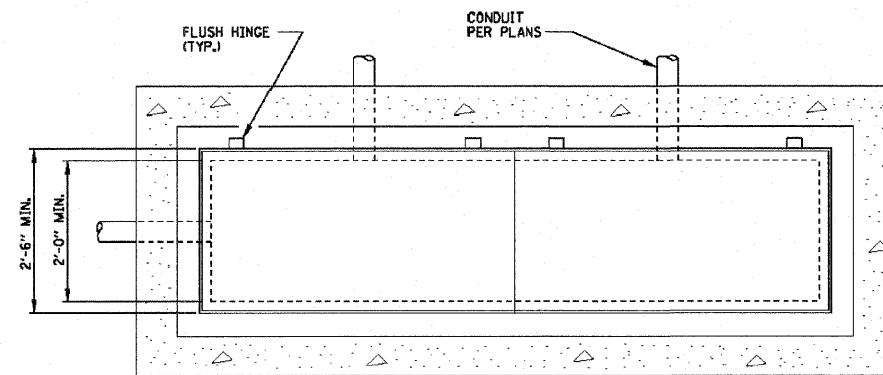


PLAN

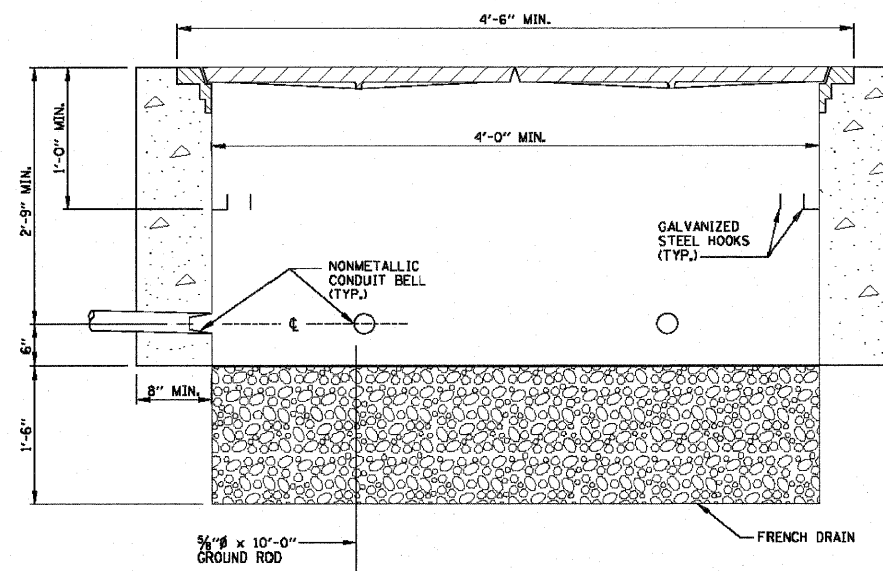


ELEVATION

POLYMER CONCRETE DOUBLE HANDHOLE



PLAN



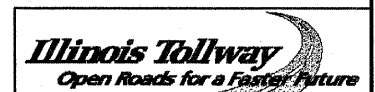
ELEVATION

CONCRETE DOUBLE HANDHOLE

NOTES:

1. JUNCTION BOXES LOCATED IN UNPAVED AREAS AND NOT PROTECTED BY GUARDRAIL SHALL BE CONSTRUCTED WITH THE TOP FLUSH WITH THE ADJACENT SLOPE.
2. AGGREGATE FOR FRENCH DRAIN SHALL BE IN ACCORDANCE WITH THE STANDARD SPECIFICATIONS.
3. HANDHOLES CONSTRUCTED IN PAVED AREAS SHALL BE HEAVY DUTY TYPE.

SHEET 2 OF 2



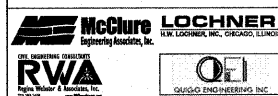
DATE	REVISIONS

BURIED WIRING DETAILS

STANDARD H4-00

Rev. 1-9-12

APPROVED *Jeff Daley* DATE 1-1-2007
CHIEF ENGINEER



USER NAME = .USERNAME.
 DESIGNED - BLM
 DRAWN - JPW
 CHECKED - BLM
 DATE - 12/22/11

REVISIONS
 REVISED -
 REVISED -
 REVISED -
 REVISED -

STATE OF ILLINOIS
 DEPARTMENT OF TRANSPORTATION

BURIED WIRING DETAILS 2

SCALE: NTS SHEET NO. OF SHEETS STA. TO STA.

F.A.I. RTE.	SECTION	COUNTY	TOTAL SHEETS	SHEET NO.
90	(X2-1R)	WINNEBAGO	510	288C
CONTRACT NO. 64C29				

ILLINOIS FED. AID PROJECT