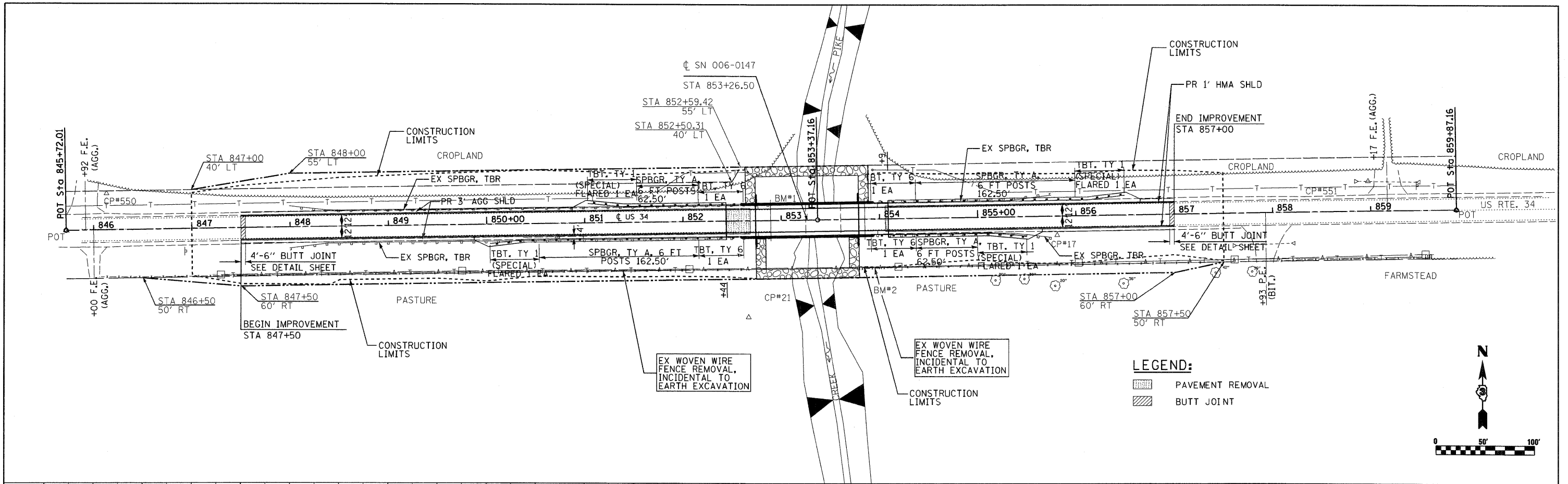
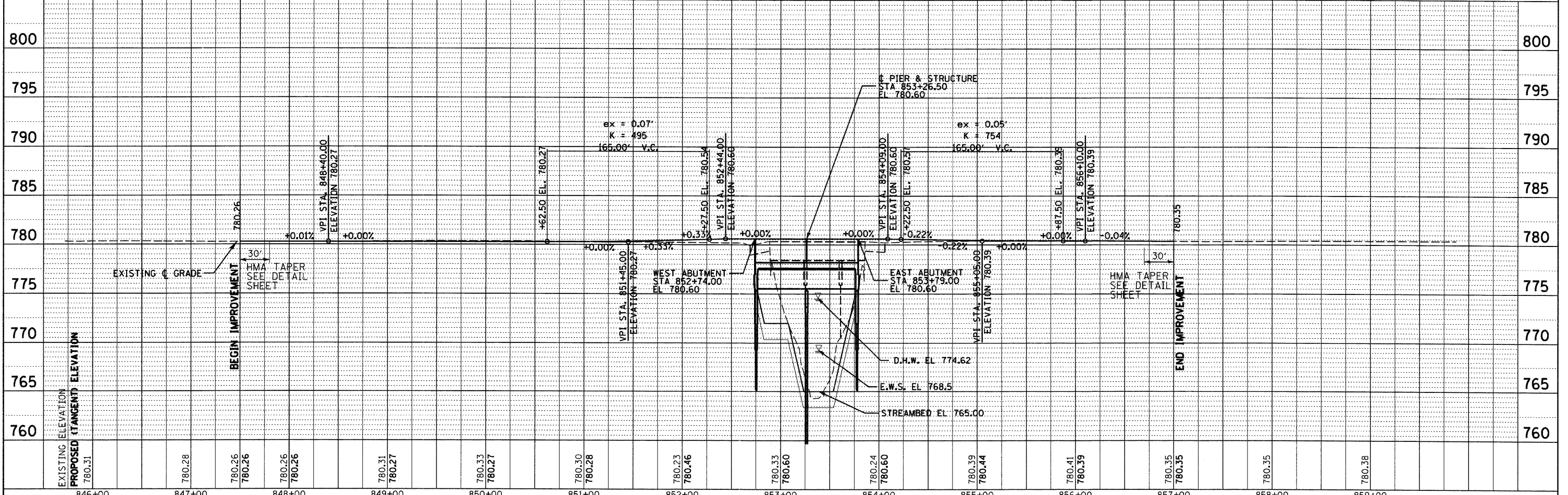
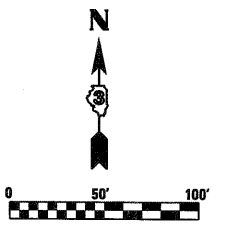


PLAN	SURVEYED	DATE
	PLOTTED	
	ALIGNED	
	CHECKED	
	FILED	
	BY	
	NO.	

PROFILE	SURVEYED	DATE
	PLOTTED	
	GRADES CHECKED	
	STRUCTURE NOTATIONS CHKD	
	BY	
	NO.	



LEGEND:
 PAVEMENT REMOVAL
 BUTT JOINT



846+00	847+00	848+00	849+00	850+00	851+00	852+00	853+00	854+00	855+00	856+00	857+00	858+00	859+00
--------	--------	--------	--------	--------	--------	--------	--------	--------	--------	--------	--------	--------	--------

DELTA ENGINEERING GROUP, LLC
 111 W. JACKSON ROAD, SUITE 100
 CHICAGO, ILLINOIS 60604
 TEL: 773.399.8888
 FAX: 773.399.8889
 WWW.DELTAENGINEERINGGROUP.COM

USER NAME = kkhan
 DESIGNED DB
 DRAWN DB
 CHECKED AS
 DATE OCTOBER 14, 2011

REVISED -
 REVISED -
 REVISED -
 REVISED -

**STATE OF ILLINOIS
 DEPARTMENT OF TRANSPORTATION**

PLAN AND PROFILE

SCALE: 1" = 50' SHEET NO. 9 OF 61 SHEETS STA. 847+50.00 TO STA. 857+00.00

F.A.P. RTE. 587	SECTION (22 BR)BR	COUNTY BUREAU	TOTAL SHEETS 61	SHEET NO. 9
FED. ROAD DIST. NO. [ILLINOIS] FED. AID PROJECT			CONTRACT NO. 66995	