

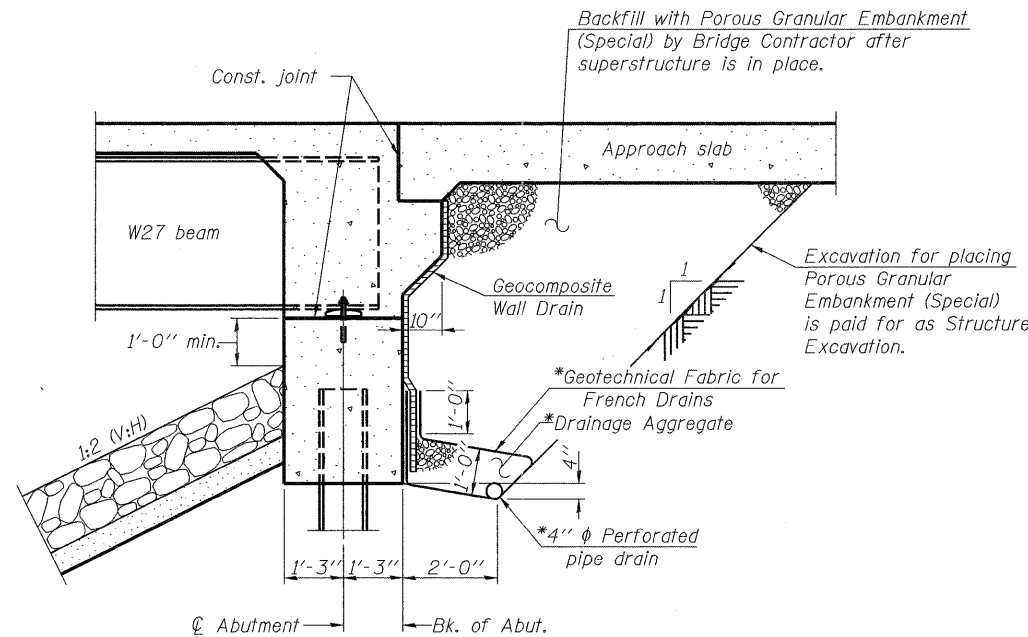
**GENERAL NOTES:**

- Fasteners shall be AASHTO M164 Type 1, mechanically galvanized bolts in painted areas and M164 Type 3 in unpainted areas. Bolts  $\frac{7}{8}$  in.  $\phi$ , holes  $\frac{15}{16}$  in.  $\phi$ , unless otherwise noted.
- Calculated weight of Structural Steel = 75,200 pounds (AASHTO, M270, Grade 50W).
- All structural steel shall be AASHTO M 270 Grade 50W. All structural steel shall be cleaned as specified in Section 506 of the Standard Specifications.
- No field welding is permitted except as specified in the contract documents.
- Reinforcement bars designated (E) shall be epoxy coated.
- Bearing seat surfaces shall be constructed or adjusted to the designated elevations within a tolerance of  $\frac{1}{8}$  inch (0.01 ft.). Adjustment shall be made either by grinding the surface or by shimming the bearings.
- Structural steel shall only be painted for a distance equal to the depth of embedment into the concrete cap plus 3 inches. Painted areas shall be primed in the shop with a Department approved zinc rich primer. Field painting will not be required.
- Layout of the slope protection system may be varied to suit ground conditions in the field as directed by the Engineer.

**TOTAL BILL OF MATERIAL**

ITEM	UNIT	SUPER.	SUB.	TOTAL
Stone Riprap, Class A5	Sq Yd	-	773	773
Filter Fabric	Sq Yd	-	773	773
Removal of Existing Structures	Each	1	-	1
Structure Excavation	Cu Yd	-	111	111
Cofferdam Excavation	Cu Yd	-	17.0	17.0
Cofferdam (Type 1) (Location - 1)	Each	-	1	1
Floor Drains	Each	12	-	12
Concrete Structures	Cu Yd	-	92.2	92.2
Concrete Superstructure	Cu Yd	248.5	-	248.5
Bridge Deck Grooving	Sq Yd	590	-	590
Concrete Encasement	Cu Yd	-	7.4	7.4
Protective Coat	Sq Yd	707.0	-	707.0
Furnishing and Erecting Structural Steel	L Sum	1	-	1
Stud Shear Connectors	Each	2772	-	2772
Reinforcement Bars, Epoxy Coated	Pound	56,680	11,120	67,800
Bar Splicers	Each	542	128	670
Furnishing Steel Piles HP10x42	Foot	-	640	640
Driving Piles	Foot	-	640	640
Test Pile Steel HP10x42	Each	-	3	3
Name Plates	Each	1	-	1
Anchor Bolts, $\frac{3}{4}$ "	Each	12	-	12
Anchor Bolts, 1"	Each	24	-	24
Geocomposite Wall Drain	Sq Yd	-	49	49
Porous Granular Embankment, Special	Cu Yd	-	111	111
Temporary Sheet Piling	Sq Ft	-	632	632
Pipe Underdrains for Structures 4"	Foot	-	106	106

\* Quantity includes deck surface, approach slabs, inside face and top of parapets on deck and approaches.



**SECTION THRU INTEGRAL ABUTMENT**

\*Included in the cost of Pipe Underdrains for Structures.

Note:  
All drainage system components shall extend to 2'-0" from the end of each wingwall except an outlet pipe shall extend until intersecting with the side slopes. The pipes shall drain into concrete headwalls. (See Article 601.05 of the Standard Specifications and Highway Standard 601101).

	USER NAME = kkhhan	DESIGNED - SK	REVISED -	<b>STATE OF ILLINOIS</b> <b>DEPARTMENT OF TRANSPORTATION</b>	<b>GENERAL NOTES &amp; TOTAL BILL OF MATERIAL</b> <b>STRUCTURE NO. 006-0183</b>	F.A.P. RTE. 587	SECTION (22 BR)BR	COUNTY BUREAU	TOTAL SHEETS 61	SHEET NO. 18
	PLOT SCALE =	CHECKED - GBC/SMK	REVISED -			ILLINOIS FED. AID PROJECT				
	PLOT DATE = 11/23/2011	DRAWN - SK	REVISED -	SHEET NO. 2 OF 26 SHEETS						
		CHECKED - GBC/SMK	REVISED -							