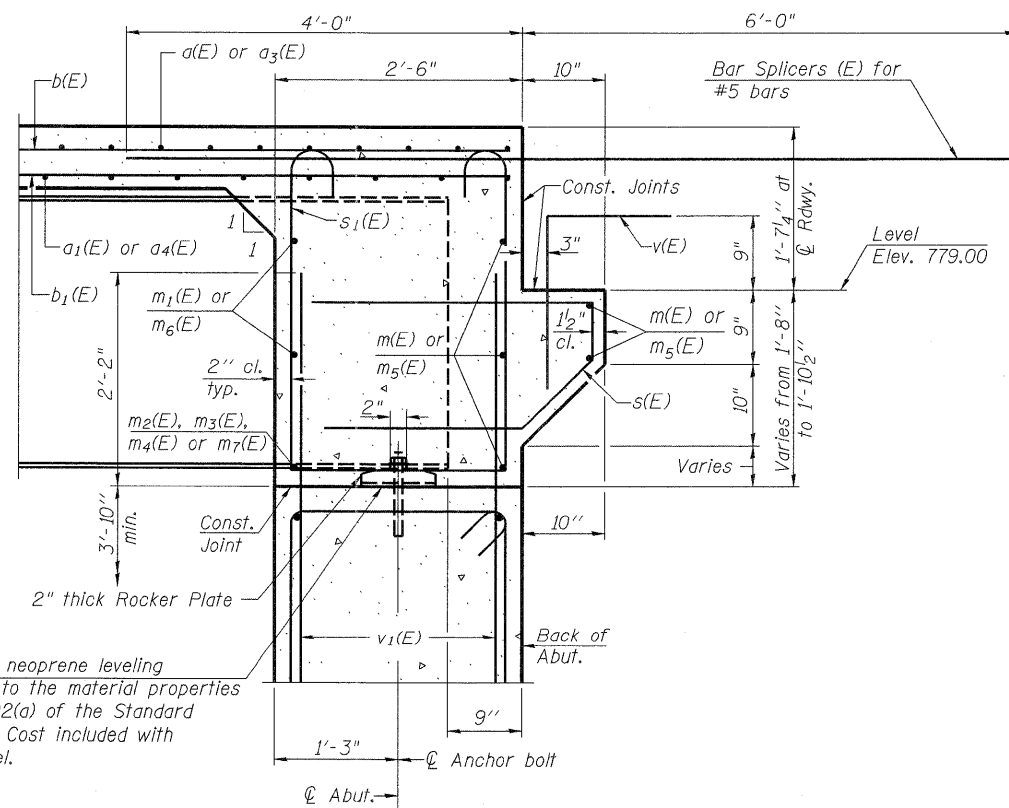


**DIAPHRAGM ELEVATION AT EAST ABUTMENT (LOOKING EAST)**

West Abutment similar, opposite hand.



**SECTION A-A**

Notes:  
 Reinforcement bars in diaphragm are billed with superstructure on sheet 11 of 26.  
 Concrete in diaphragm is included with Concrete Superstructure on sheet 11 of 26.  
 For details of bars s(E) & s (E) see sheet 11 of 26.  
 Start m<sub>1</sub>(E) bars in Stage I at end of diaphragm.  
 Cut in field at stage construction line.  
 Start m<sub>6</sub>(E) bars in Stage II at stage construction line.  
 Cut in field at end of diaphragm.

**MIN. BAR LAP**

#6 bar = 3'-4"

1/8" elastomeric neoprene leveling pad according to the material properties of Art. 1052.02(a) of the Standard Specifications. Cost included with Structural Steel.

	USER NAME = kkhhan	DESIGNED - SK	REVISED -	<b>STATE OF ILLINOIS</b> <b>DEPARTMENT OF TRANSPORTATION</b>	<b>INTEGRAL ABUTMENT DIAPHRAGM DETAILS</b> <b>STRUCTURE NO. 006-0183</b>	F.A.P. RTE.	SECTION	COUNTY	TOTAL SHEETS	SHEET NO.
	PLOT SCALE =	CHECKED - GBC/SMK	REVISED -			587	(22 BR/BR	BUREAU	61	29
	PLOT DATE = 10/11/2011	DRAWN - SK	REVISED -			SHEET NO. 13 OF 26 SHEETS			CONTRACT NO. 66995	
CHECKED - GBC/SMK REVISED -				ILLINOIS FED. AID PROJECT						