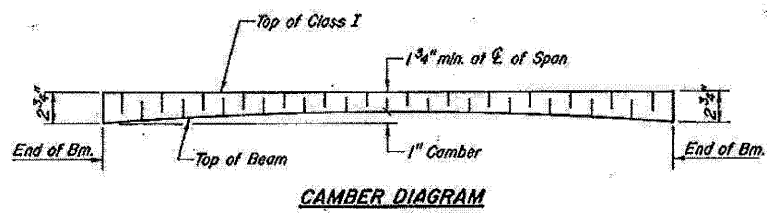
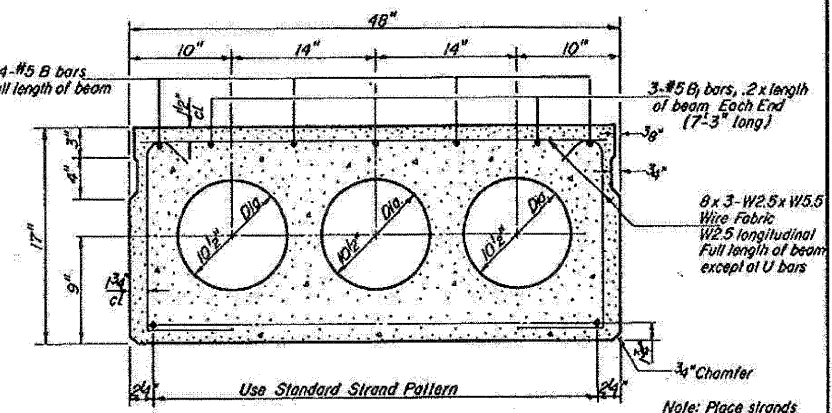
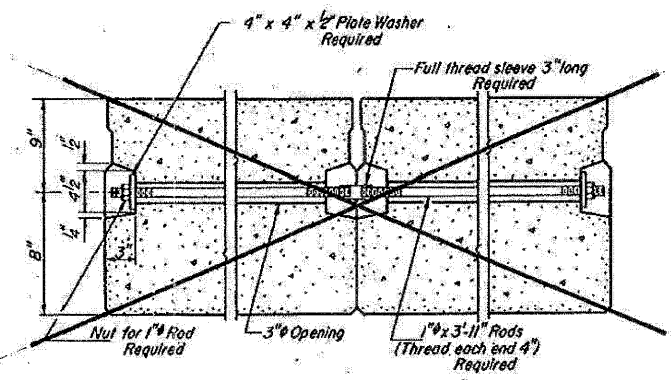
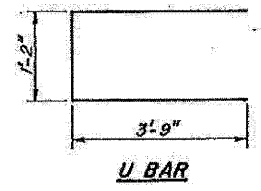
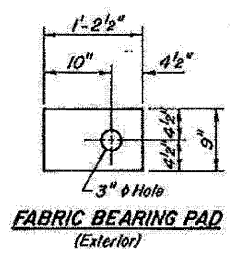
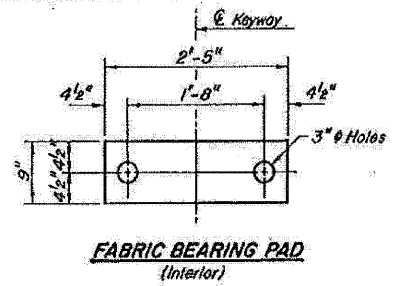


DATE	
BY	
REVIEWED	
PLANNED	
NOTED	
FILED	

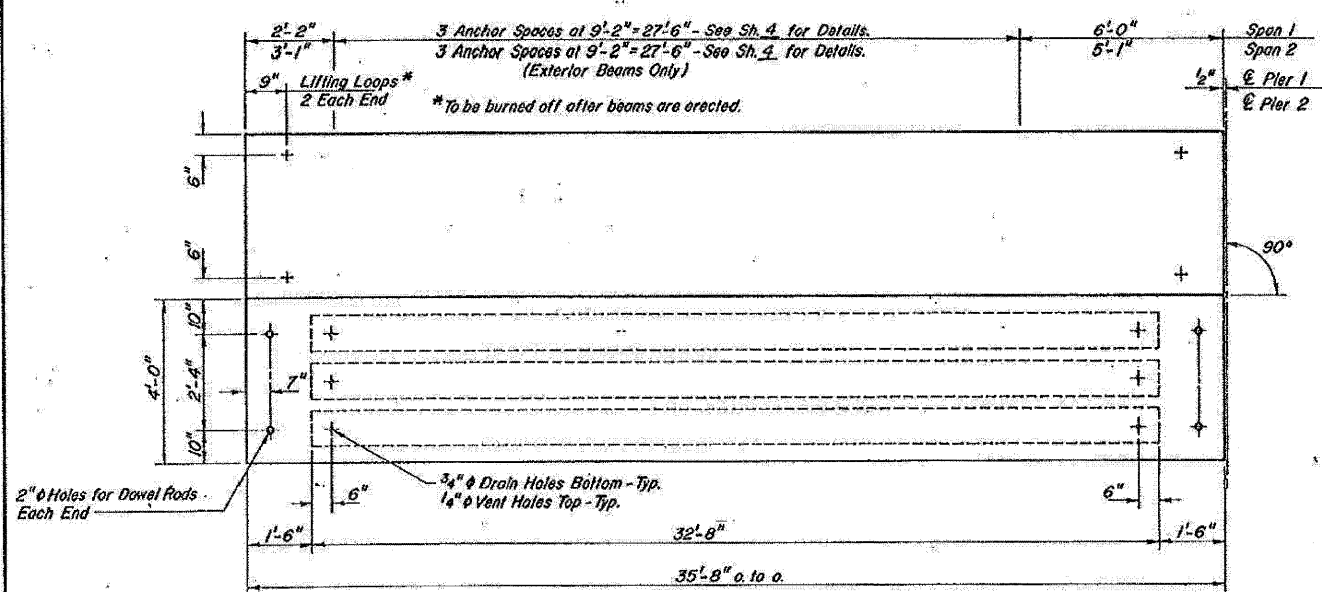
DATE	
BY	
REVIEWED	
PLANNED	
NOTED	
FILED	

ROUTE NO.	SECTION	COUNTY	TOTAL SHEETS	SHEET NO.
587	22BR	BUREAU	24	10
SHEET NO. 2				
8 SHEETS				

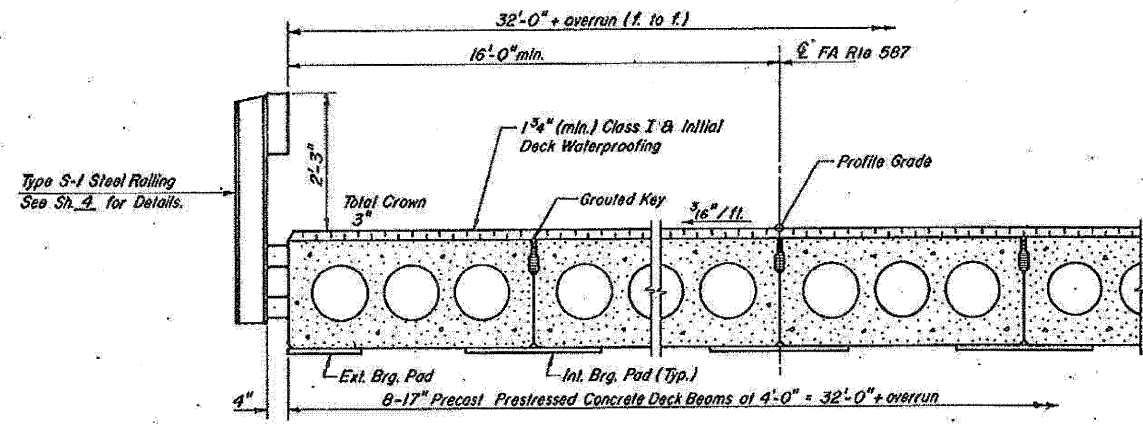
NOTE:  
Omit Keyway on fascia side exterior beams.



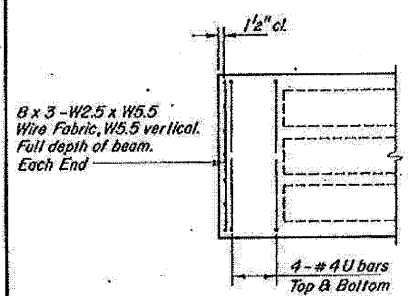
TYPICAL SECTION  
11-1/2" Strands, Each Strand Stressed to 28,900 Lbs.  
11-Strands 1 3/4" up.



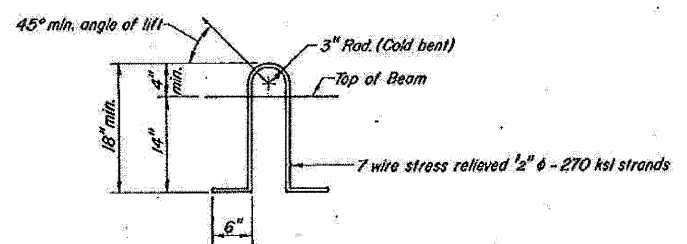
PLAN



PARTIAL CROSS SECTION



END PLAN



LIFTING LOOP DETAIL

NOTES  
Prestressing steel shall be non-galvanized high strength, stress-relieved 7-wire strand, Grade 270. The nominal diameter shall be 1/2" and the nominal cross-sectional area shall be 0.153 sq. in. Lifting loops shall be 1/2" diameter, 6 x 25 class wire rope with fiber core and shall have a minimum ultimate tensile strength of 21,000 lbs. or 2-1/2" - 270 ksi strands. The 1" rods in the transverse tie assembly shall be tightened to a snug fit and the threads on packets that receive transverse tie bar on outside shall be filled with grout after transverse tie assembly is in place. Reinforcement bars shall conform to AASHTO M-31 or M-53, Grade 60. The bearing seat surfaces shall be adjusted by shimming to assure firm and even bearing. Two 1/8" fabric adjusting shims of the dimensions of the Exterior Bearing Pad shall be provided for each bearing. An equal substitution of the low-relaxation strands for the stressed-relieved strands will be permitted. Keyway surfaces shall be cleaned to remove form oil or other bond breaking material prior to shipment of the beams. Cleaning shall be done by sand-blasting the keyway areas between the top of the beam and the bottom edge of the key. Work this sheet with sheets 5 and 6 of B.

BILL OF MATERIAL

Bar	No.	Size	Length	Shape
Precast Prestressed Concrete Deck Beams (17" Depth)		Sq. Ft.	2283	

SUPERSTRUCTURE  
SPANS 1 & 2  
FA RTE 587 OVER PIKE CR.  
SECTION 22BR  
BUREAU COUNTY

GREENE & BRADFORD, Ltd.  
CONSULTING ENGINEERS  
1810 STEVENSON DR. • 311.525.4641 • SPRINGFIELD, ILL.

EXISTING PLANS  
FOR INFORMATION ONLY  
S.N. 006-0147



USER NAME =	kkhan
DESIGNED DB	
DRAWN DB	
CHECKED AS	
DATE	OCTOBER 14, 2011
REVISIONS	

REVISIONS	
REVISIONS	
REVISIONS	
REVISIONS	

STATE OF ILLINOIS  
DEPARTMENT OF TRANSPORTATION

EXISTING PLAN - STRUCTURE

SCALE: NTS SHEET NO. 44 OF 61 SHEETS STA. TO STA.

F.A.P. RTE.	SECTION	COUNTY	TOTAL SHEETS	SHEET NO.
587	(22 BR)BR	BUREAU	61	44
CONTRACT NO. 66995			FED. ROAD DIST. NO. ILLINOIS FED. AID PROJECT	