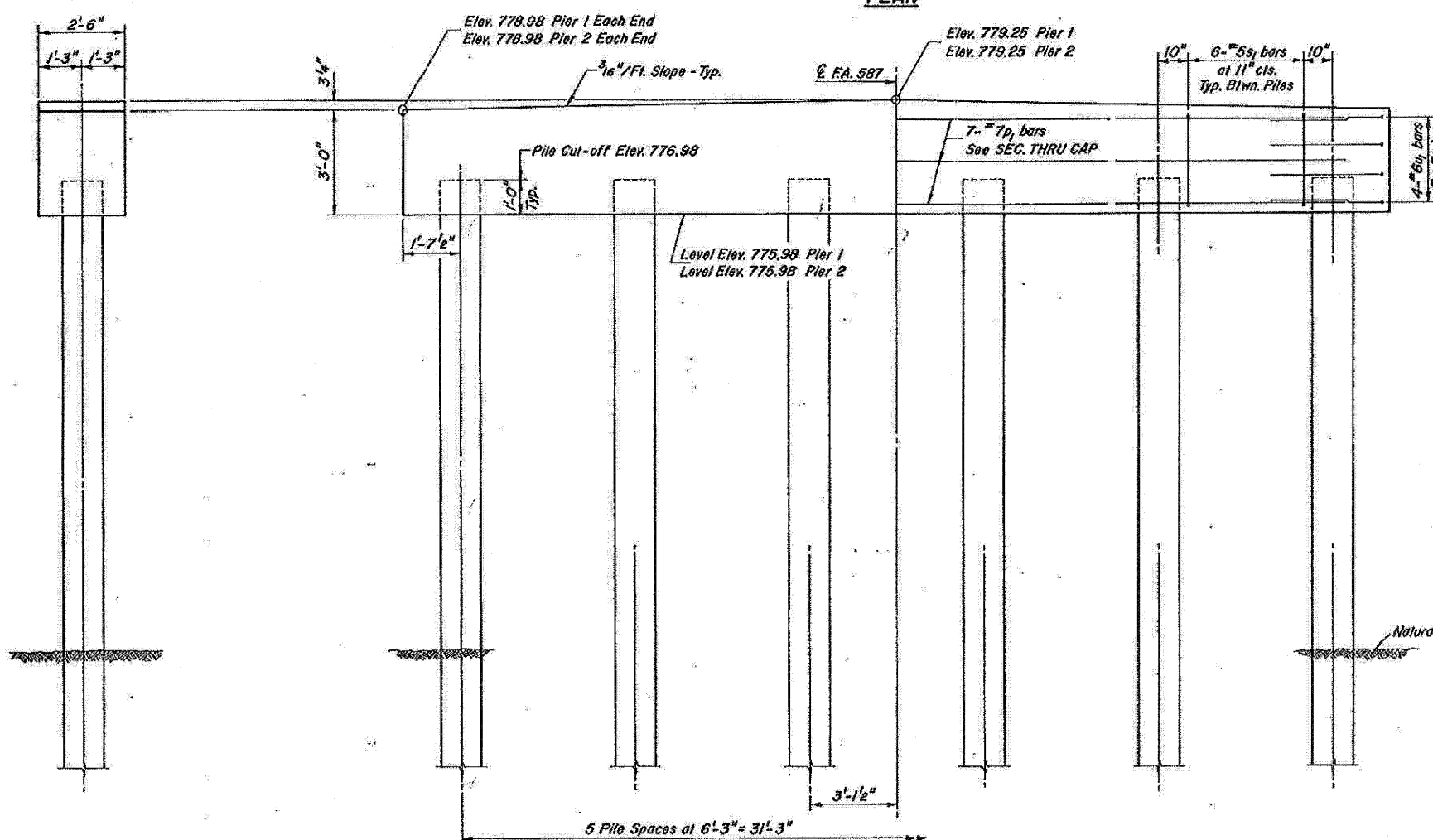
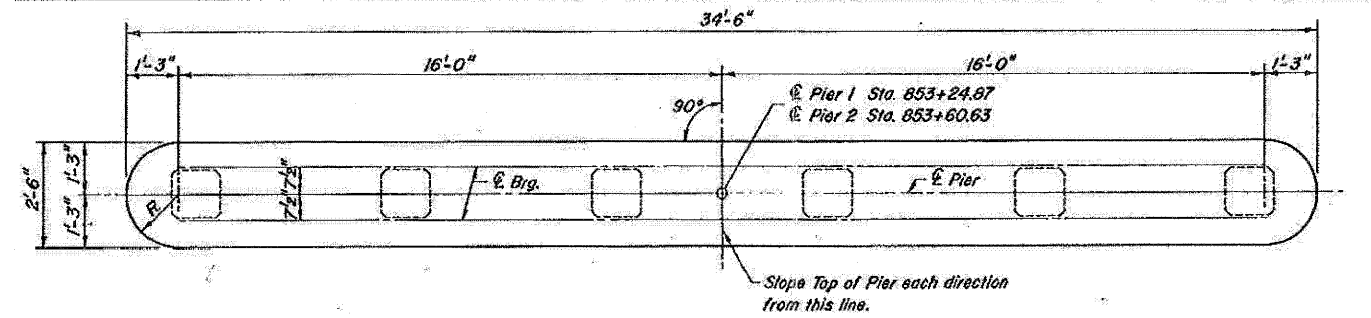


DATE _____ BY _____
 PLAN SUBMITTED _____
 PLOTTED _____
 NOTE BOOK _____
 NO. _____

DATE _____ BY _____
 PROFILE SUBMITTED _____
 PLOTTED _____
 NOTE BOOK _____
 NO. _____

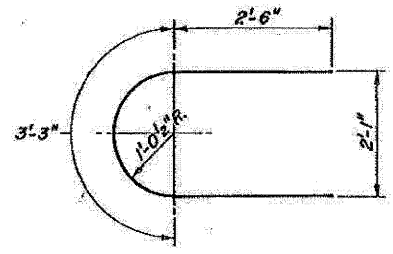
ROUTE	SECTION	COUNTY	TOTAL SHEETS	SHEET NO.
FA. 587	22BR	BUREAU	24	13
FHWA. REG. NO. 6 ILLINOIS FED. AID PROJECT-				

SHEET NO. 5
8 SHEETS

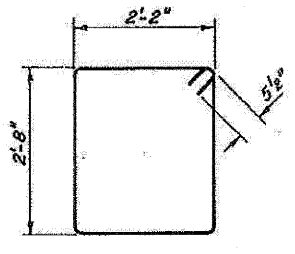


END VIEW

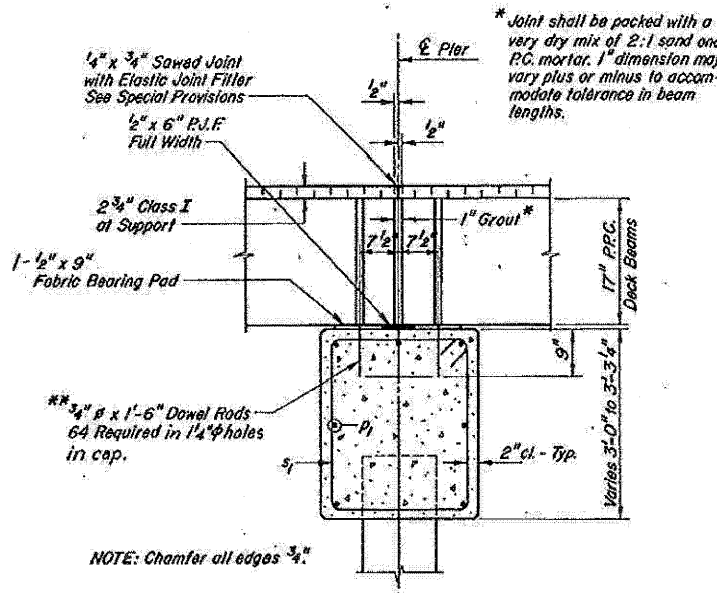
ELEVATION



BAR U₁



BAR S₁



SECTION THRU CAP

**Dowel Rods to be grouted after beams are in place. Allow rods to cure (minimum 24 hours) prior to grouting the shear keys. Cost of rods to be incidental to the Unit Price Bid for P.P.C. Deck Beams (17" Depth).

NOTE: Chamfer all edges 3/8"

**TWO PIERS
BILL OF MATERIALS**

Bar	No.	Size	Length	Shape
P ₁	14	#7	32'-0"	—
S ₁	60	#5	10'-7"	□
U ₁	16	#6	8'-3"	U
Class X Concrete		Cu. Yd.	19.7	
Reinforcement Bars		Pound	1780	
Precast Conc. Piles 14"		Lin. Ft.	319	
Test Pile, Precast Conc.		Each	1	

**EXISTING PLANS
FOR INFORMATION ONLY
S.N. 006-0147**

PILE DATA
 Type: Precast Concrete 14"
 Capacity: 32T
 Est. Length: 28' Pier 1, 29' Pier 2
 No. Required: 12 (Includes 1 Test Pile)

Contractor shall drive one Precast Pile in a permanent location at Pier 1 before ordering remainder of piles.

PIERS
 FA. ROUTE 587 OVER PIKE CREEK
 SECTION 22BR BUREAU COUNTY
 STA. 853 + 37.16

GREENE & BRADFORD, Ltd.
 CONSULTING ENGINEERS
 1513 STEVENSON DR. | ST. LOUIS, MO. | 63103-2000, U.S.A.