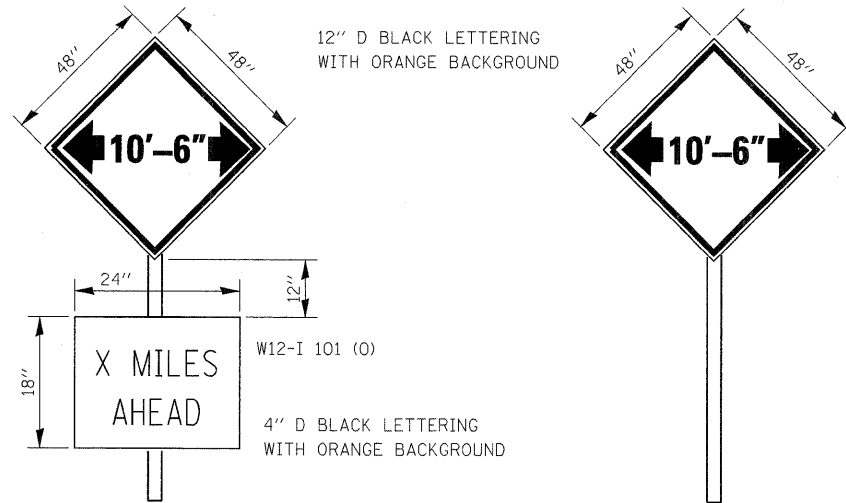
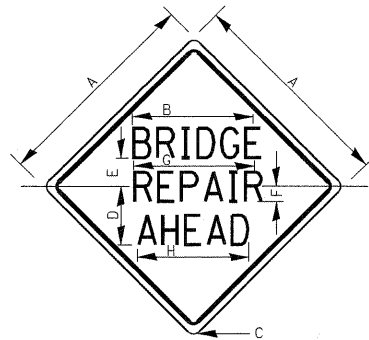


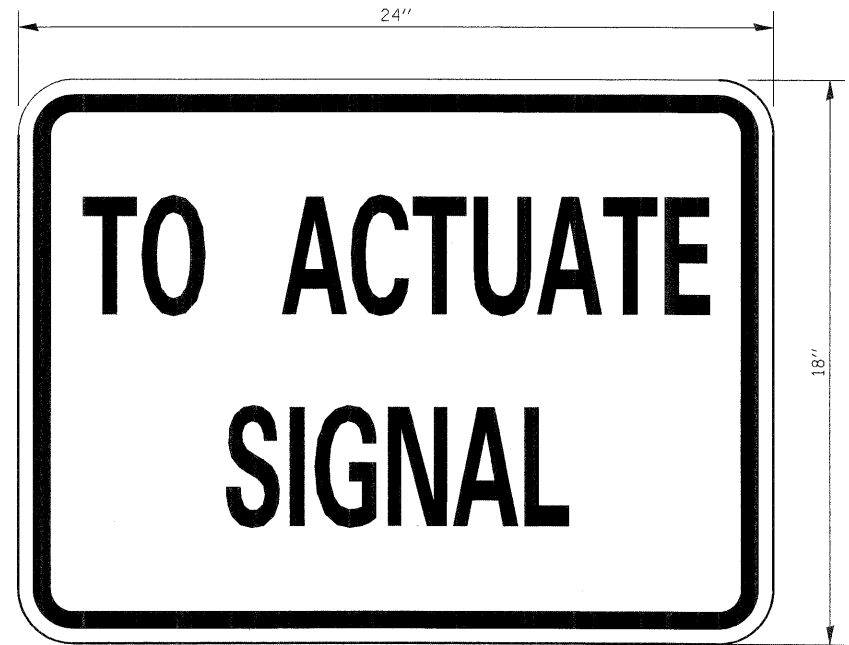
DATE	
BY	
REVIEWED	
PLANNED	
NOTED	
NO.	

WIDTH RESTRICTION SIGN PLACEMENT	STAGE I TEXT	STAGE II TEXT
AFTER BRIDGE CONSTRUCTION AHEAD SIGN (EAST BOUND)	11'-0"	10'-6"
AFTER BRIDGE CONSTRUCTION AHEAD SIGN (WEST BOUND)	11'-0"	10'-6"



A TOTAL OF FOUR POST MOUNTED SIGNS ARE REQUIRED:
 FOR WESTBOUND TRAFFIC, ONE SIGN SHALL BE PLACED AT THE JUNCTION OF IL 251 AND US 34.
 FOR EASTBOUND TRAFFIC, ONE SIGN SHALL BE PLACED AT THE JUNCTION OF US 34 AND IL 92.
 ONE SIGN IN EACH DIRECTION SHALL ALSO BE PLACED AFTER THE ROAD CONSTRUCTION AHEAD SIGN.

THE CONTRACTOR SHALL BE RESPONSIBLE FOR COORDINATING WITH THE ENGINEER TO MEET THIS REQUIREMENT.



SIZE: 24" x 18"

GENERAL NOTE:

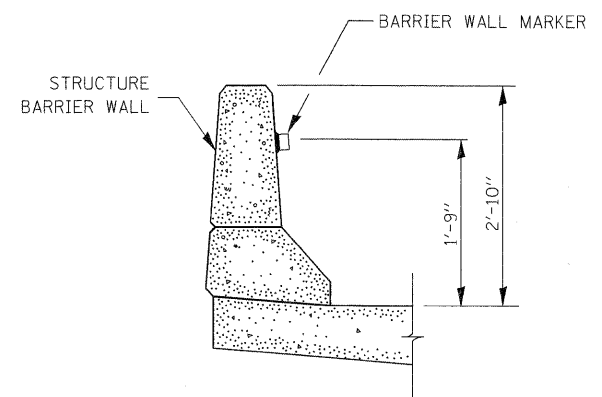
4" CAPITAL LETTERS - BLACK

THIS SIGN SHALL BE INSTALLED AT THE STOP LINE AS DIRECTED BY THE ENGINEER.

1/2" BORDER - BLACK

WHITE REFLECTIVE - TYPE B
 ENGINEERING GRADE SHEETING

STOP LINE SIGN FOR TEMPORARY SIGNALS



BARRIER WALL MARKER

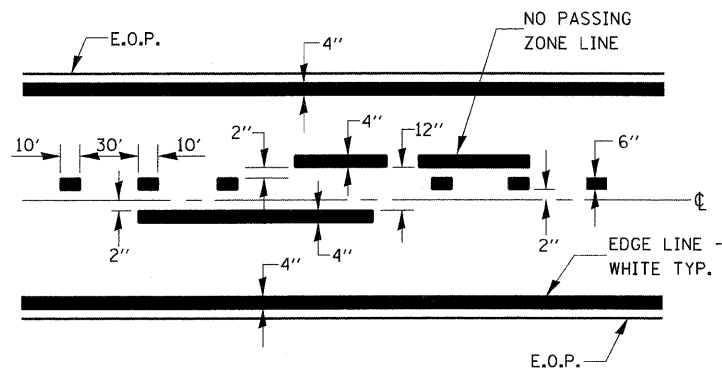
COLOR: LEGEND AND BORDER BACKGROUND BLACK NON-REFLECTORIZED ORANGE REFLECTORIZED

SIGN SIZE	DIMENSIONS							
	A	B	C	D	E	F	G	H
36 x 36	36.0	22.3	2.25	10.8	5.6	3.0	21.9	20.7
48 x 48	48.0	26.0	3.0	14.5	7.5	3.5	25.5	24.1

SIGN SIZE	SERIES LINES			MARGIN	BORDER	BLANK STD.
	1	2	3			
	36 x 36	5C	5C			
48 x 48	7C	7C	7C	0.8	1.2	B4-48D

ALL DIMENSIONS IN INCHES.

ILLINOIS STANDARD W21-I102

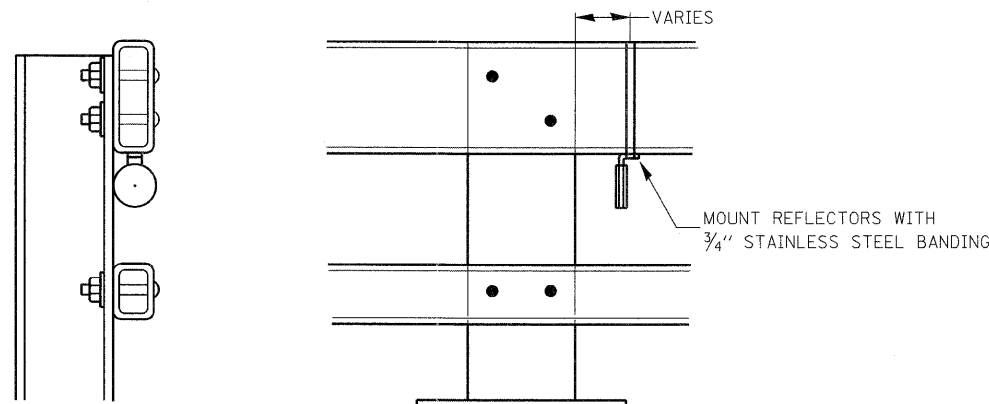


CENTERLINE & NO PASSING ZONE LINES - YELLOW

(SEE TYPICAL SECTIONS)

PAVEMENT MARKING

WIDTH RESTRICTION SIGNING DETAILS



NOTES

- REFLECTORS SHALL MEET THE REQUIREMENTS OF ARTICLE 1097.03 OF THE STANDARD SPECIFICATIONS.
- FURNISHING AND INSTALLING THE COMPLETE REFLECTOR UNIT WILL BE PAID AT THE CONTRACT UNIT PRICE EACH FOR GUARD RAIL MARKERS.

**REFLECTOR MOUNTING
 DETAIL FOR STEEL RAIL**

STATE OF ILLINOIS
 DEPARTMENT OF TRANSPORTATION

DETAILS

SCALE: NONE SHEET NO. 55 OF 61 SHEETS STA. TO STA.

F.A.P. RTE.	SECTION	COUNTY	TOTAL SHEETS	SHEET NO.
587	(22 BRIBR)	BUREAU	61	55
FED. ROAD DIST. NO.		ILLINOIS FED. AID PROJECT		

CONTRACT NO. 66995

DATE	
BY	
REVIEWED	
PLANNED	
NOTED	
NO.	