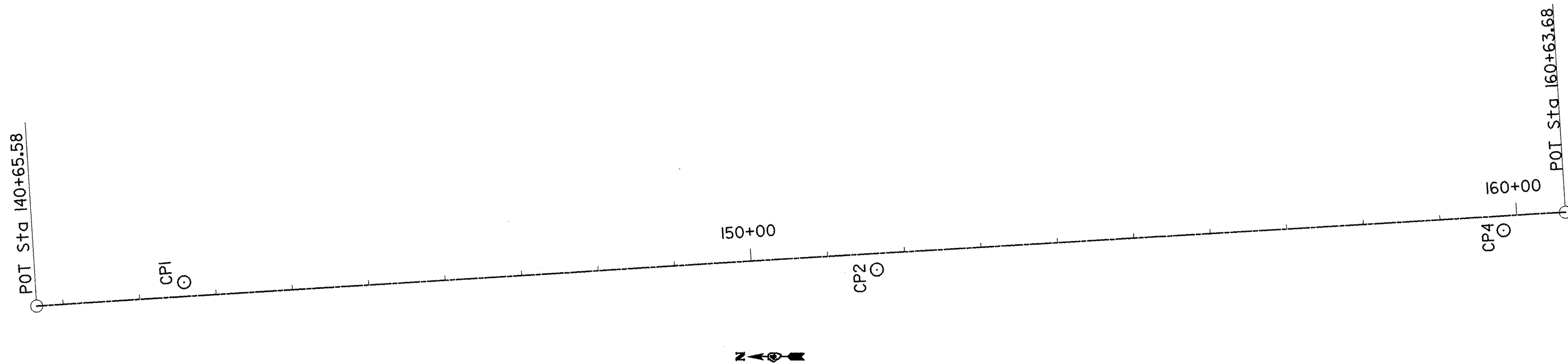


<p><b>CP 1</b></p> <p>STATION - 142+59.44          OFFSET - 18.66' LT          NORTHING - 1603883.53          EASTING - 2237185.70</p>	<p><b>CP 2</b></p> <p>STATION - 151+63.03          OFFSET - 20.81 RT          NORTHING - 1602979.24          EASTING - 2237202.88</p>	<p><b>CP 4</b></p> <p>STATION - 159+81.84          OFFSET - 18.84 RT          NORTHING - 1602162.16          EASTING - 2237256.10</p>	<p><b>BENCHMARK</b></p> <p>CHISELED SQUARE ON NORTHEAST          CORNER OF ABUTMENT (SN 048-0027),          ELEVATION 721.80</p>
<p>5/8" IRON ROD - 40' NORTH OF          THE NORTH END OF EAST          GUARDRAIL EAST SIDE OF US 150</p>	<p>5/8" IRON ROD - SOUTH END          OF WEST GUARDRAIL          WEST SIDE OF US 150</p>	<p>5/8" IRON ROD - SOUTH END          OF PROJECT WEST SIDE          OF US 150</p>	<p>BENCHMARK          ELE = 721.8</p>



FILE NAME =	USER NAME = lcbabdsam	DESIGNED -	REVISED -
Cover Sheet, District Std, General Notes	haseu.dgn	DRAWN -	REVISED -
	PLDT SCALE = 100.0000' / 1" =	CHECKED -	REVISED -
	PLDT DATE = 10/17/2011	DATE -	REVISED -

**STATE OF ILLINOIS  
DEPARTMENT OF TRANSPORTATION**

**ALIGNMENT, TIES, & BENCHMARKS**

SCALE: SHEET NO. OF SHEETS STA. TO STA.

F.A.S RTE.	SECTION	COUNTY	TOTAL SHEETS	SHEET NO.
1190	(125BY)BR	KNOX	94	19
ILLINOIS FED. AID PROJECT			CONTRACT NO. 68087	