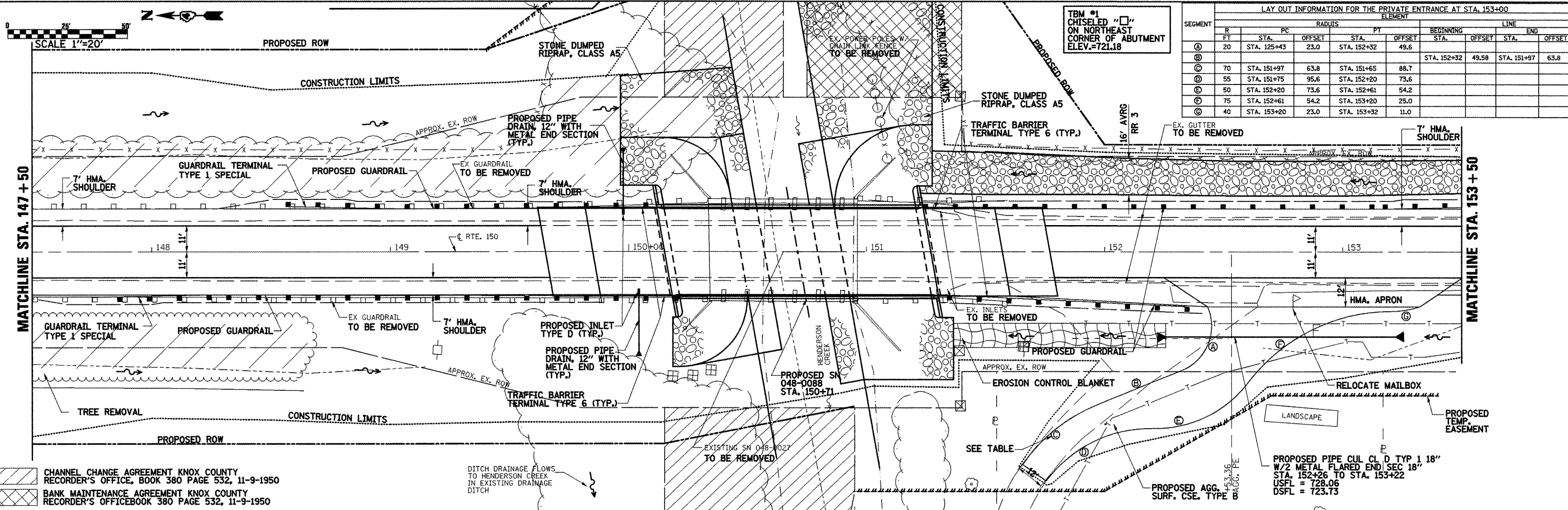


DATE: \_\_\_\_\_  
 BY: \_\_\_\_\_  
 SURVEYED: \_\_\_\_\_  
 IN OMB: \_\_\_\_\_  
 PLANNED: \_\_\_\_\_  
 CHECKED: \_\_\_\_\_  
 DATE: \_\_\_\_\_  
 FILE NO.: \_\_\_\_\_

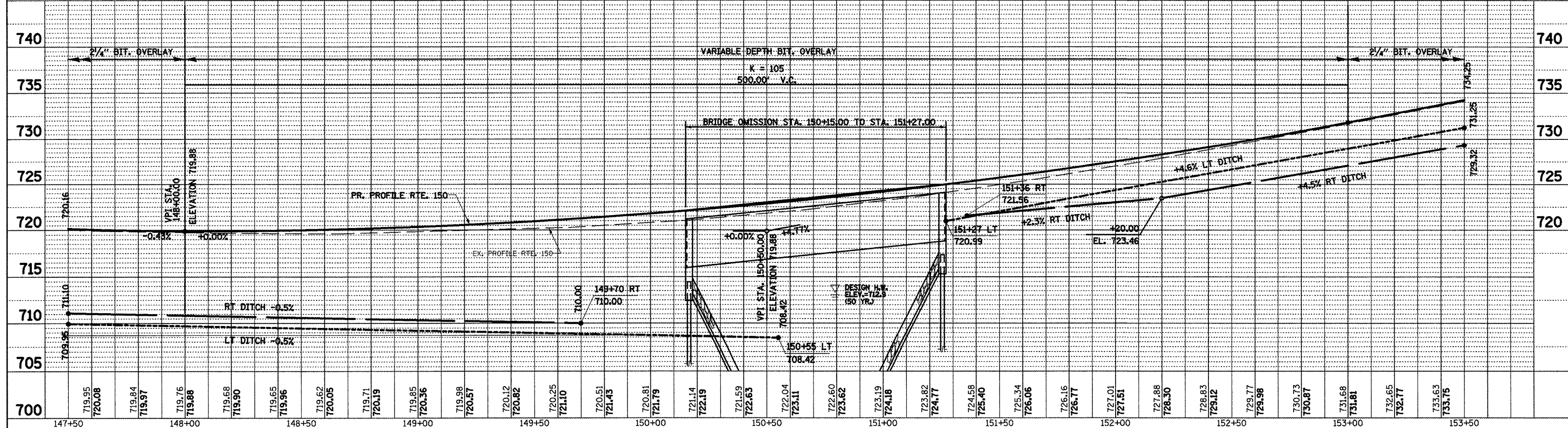
DATE: \_\_\_\_\_  
 BY: \_\_\_\_\_  
 SURVEYED: \_\_\_\_\_  
 IN OMB: \_\_\_\_\_  
 PLANNED: \_\_\_\_\_  
 CHECKED: \_\_\_\_\_  
 DATE: \_\_\_\_\_  
 FILE NO.: \_\_\_\_\_



LAY OUT INFORMATION FOR THE PRIVATE ENTRANCE AT STA. 153+00

SEGMENT	R	STAL	RADIUS		PT	OFFSET	BEGINNING		END	
			STAL	OFFSET			STA.	OFFSET	STA.	OFFSET
①	20	STA. 125+43	23.0		STA. 152+32	49.6	STA. 152+32	49.58	STA. 151+97	63.8
②	70	STA. 151+97	63.8		STA. 151+65	88.7				
③	55	STA. 151+75	95.6		STA. 152+20	73.6				
④	50	STA. 152+20	73.6		STA. 152+61	54.2				
⑤	75	STA. 152+61	54.2		STA. 153+20	25.0				
⑥	40	STA. 153+20	23.0		STA. 153+32	11.0				

CHANNEL CHANGE AGREEMENT KNOX COUNTY RECORDER'S OFFICE, BOOK 380 PAGE 532, 11-9-1950  
 BANK MAINTENANCE AGREEMENT KNOX COUNTY RECORDER'S OFFICEBOOK 380 PAGE 532, 11-9-1950



FILE NAME = mkesht01.dgn	USER NAME = labebidam	DESIGNED -	REVISED -	<b>STATE OF ILLINOIS DEPARTMENT OF TRANSPORTATION</b>	<b>PLAN AND PROFILE</b>	F.A.S. RTE. 1190	SECTION (125B)BR	COUNTY KNOX	TOTAL SHEETS 94	SHEET NO. 21	
PLOT SCALE = 42.353' / in.	CHECKED -	REVISED -	SCALE: 1" = 40'			SHEET NO. 2 OF 3 SHEETS	STA. 147+50 TO STA. 153+50	ILLINOIS FED. AID PROJECT		CONTRACT NO. 68087	
PLOT DATE = 10/17/2011	DATE -	REVISED -									