

INDEX OF SHEETS

- Sheet No 1 Title Sheet
- " 2 Gutter & Pavt. Details & Std. 1686
- " 3 Std. 1914T, 2017, & 2065
- " 4 Std. 1796T, 2015R, & 2016R
- " 5 Std. 1909R & 1790S
- " 6 Std. 1766R & 1744
- " 7 Std. 1971, 1972, 1867, & 2097
- " 8 Plan & Profile Sta. 127+00 to Sta. 147+00
- " 9-14 Incl. Cross Sections
- " 15-20 Incl. Special Bridge Design Sta. 132+77 (Sheets 1 to 6 of 6)
- " 21-24 Incl. Special Bridge Design Sta. 150+65 (Sheets 1 to 4 of 4)
- " 25 Plan & Profile Sta. 141+00 to Sta. 151+00

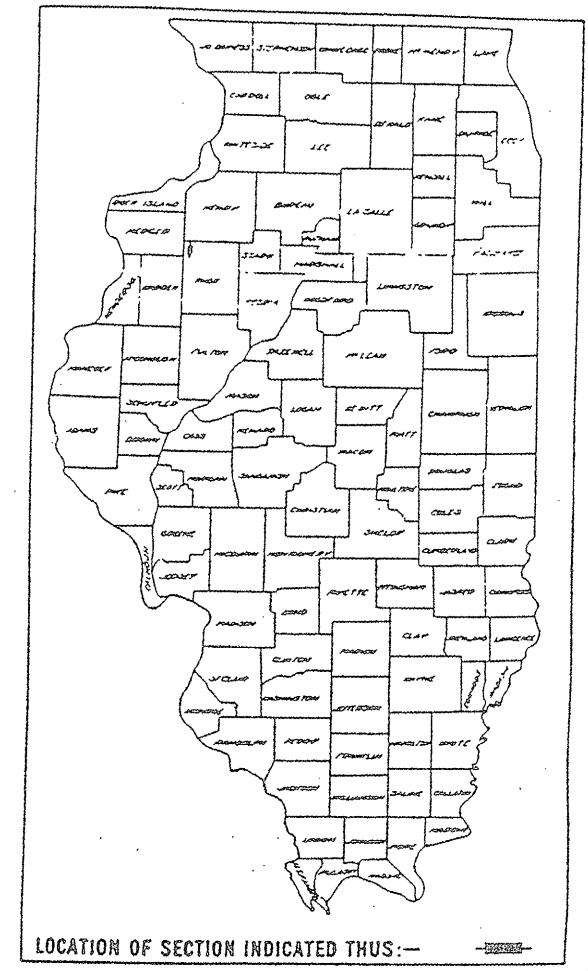
STATE OF ILLINOIS
DEPARTMENT OF PUBLIC WORKS AND BUILDINGS
DIVISION OF HIGHWAYS
PLANS FOR PROPOSED
STATE BOND ISSUE HIGHWAY

BOND ISSUE ROUTE NO.	SEC.	COUNTY	SECTION	SHEET
80	123B-R 125B-Y	KNOX	25	1
ILLINOIS PROJECT NO. FI-155(13)				

SCALES

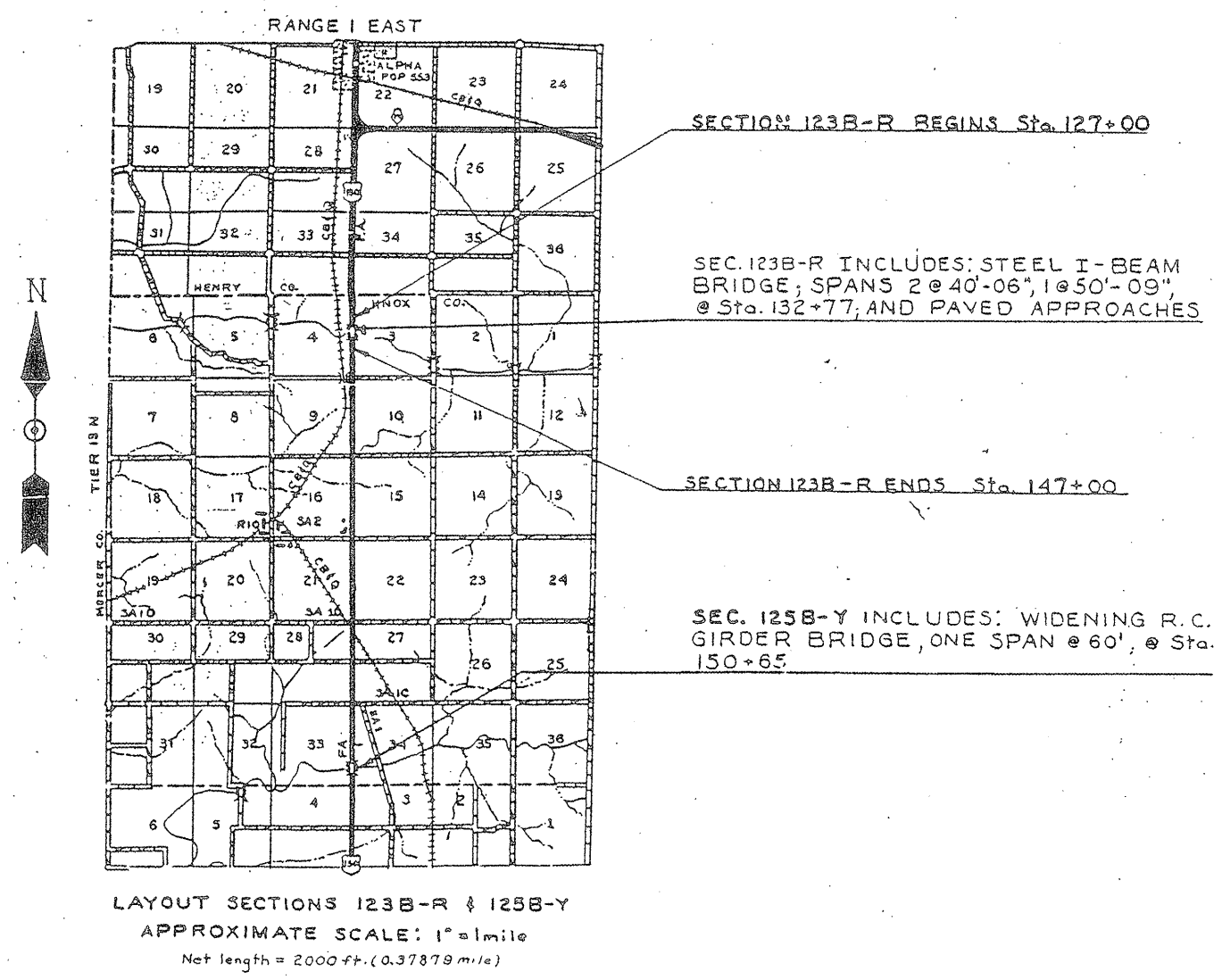
PLAN	1 INCH = 100 FT.
PROFILE HOR.	1 INCH = 100 FT.
PROFILE VERT.	1 INCH = 10 FT.
CROSS-SECTIONS	1 INCH = 5 FT.

S.B.I. ROUTE 80 SECTIONS 123B-R & 125B-Y
PROJECT FI-155(13) KNOX CO.



SUMMARY OF QUANTITIES

23,327	cu. yds.	Earth Excavation
151.6	sq. yds.	P.C.C. Pavement (16 1/2"-10 1/2"-16 1/2")
1913.7	sq. yds.	P.C.C. Pavement (9" uniform)
190	lin. ft.	Corrugated Metal Pipe, 12 inch
60	lin. ft.	Perforated Corrugated Metal Pipe, 6 inch.
5.6	cu. yds.	Handrail Concrete
589.9	cu. yds.	Class X Concrete
75,997	lbs.	Reinforcement Bars
106,960	lbs.	Structural Steel
1,020	lin. ft.	Furn. Untreated Piles Up to 30' long
536	lin. ft.	Furn. Treated Piles 20.1 to 38' long
754	lin. ft.	Furn. Precast Concrete Piles
754	lin. ft.	Driving Precast Conc. Piles 29' long
1,020	lin. ft.	Driving Piles Timber 10' long
396	lin. ft.	Driving Piles Timber 22' long
>2	each	Name Plates
>2	each	Test Piles (Concrete)
245	lin. ft.	Metal Handrail
1,170	Sq. Yds.	Slopewall
1,963	cu. yds.	Channel Excavation
3,017	cu. yds.	Compaction by Watersoaking
89	Sq. yds.	Attaching Wire Fence
298	each	Expansion Bolts "A"
14	each	Expansion Bolts "B"
14	each	Expansion Bolts "C"
x 21	cu. yds.	Concrete Removal
Lump	Sum	Detour Bridge
Lump	Sum	Removal of Detour Bridge
1	each	Removal of Existing Substructure
1,385.9	sq. yds.	Pavement Fabric
523	cu. yds.	Granular Borrow
2	cu. yds.	Porous Granular Backfill
3,411	sq. yds.	Earth Shoulders
676	lin. ft.	Concrete Gutter, Type B
873	sq. yds.	Pavement Removal
690	cu. yds.	Gravel or Crushed Stone Surface Course, Type C
4.5	tons	Calcium Chloride Applied
3.77	acres	Mulch Covering
0.17	tons	Fertilizer
4.15	acres	Seeding (temporary)
16.6	tons	Agricultural Ground Limestone
11	each	Furn. & Erecting R.O.W. Markers
776	lbs.	Cast Iron Grates
108	lin. ft.	Gutter Edge Removal
7.9	Acres	Tree Removal (Acres)



STATE OF ILLINOIS
DEPARTMENT OF PUBLIC WORKS AND BUILDINGS
DIVISION OF HIGHWAYS

DESIGNED: July 13, 1928
Checked: J. D. Mattison
4-28-1928
Approved: [Signature]
9-29-1928
Approved: [Signature]
4-29-1928
Approved: [Signature]

420

DEPARTMENT OF COMMERCE
BUREAU OF PUBLIC ROADS

RECOMMENDED FOR APPROVAL:

[Signature] DISTRICT ENGINEER [Signature] DATE

APPROVED:

[Signature] DIVISION ENGINEER [Signature] DATE

150+65