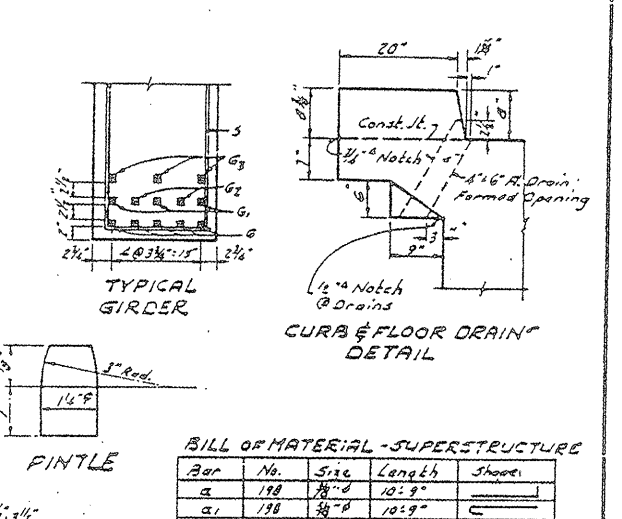
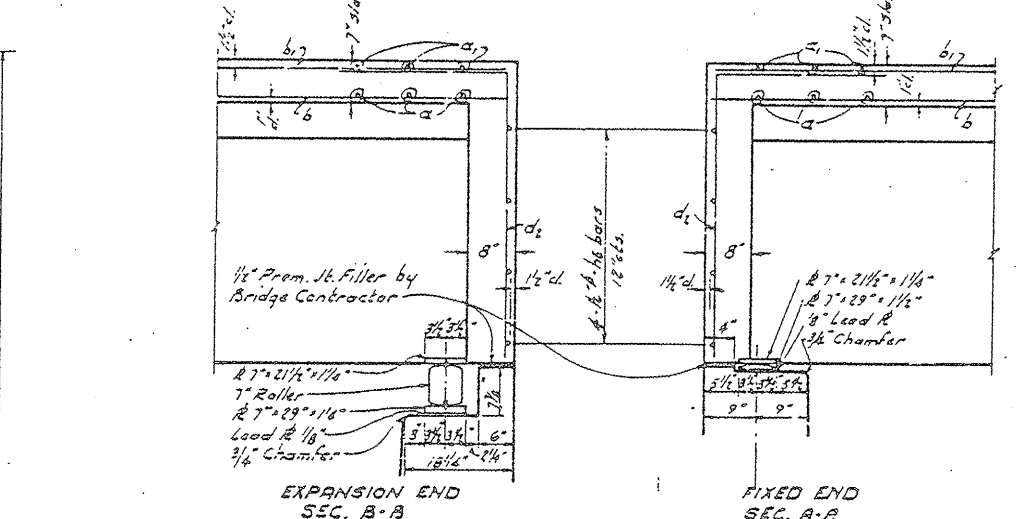
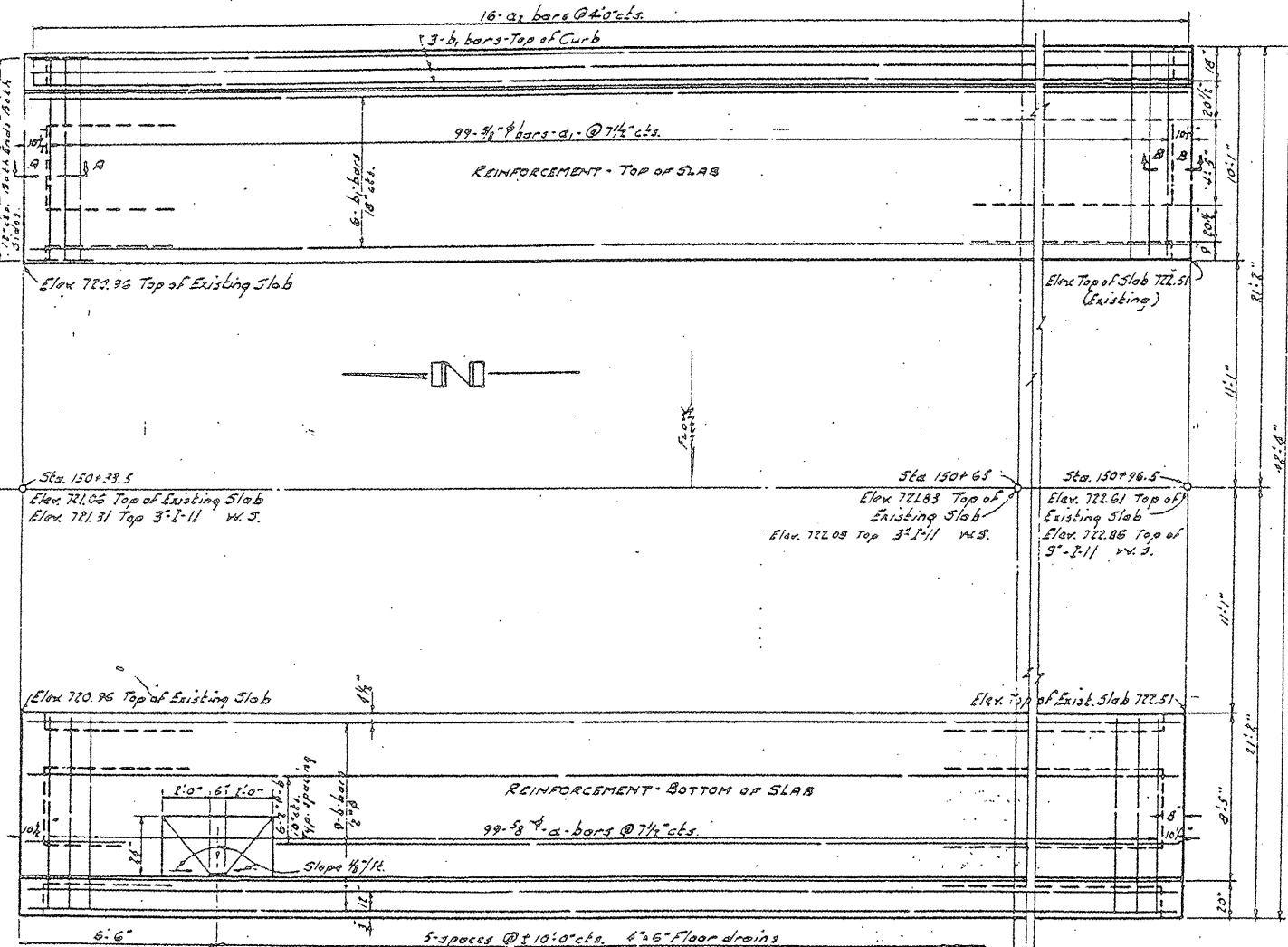
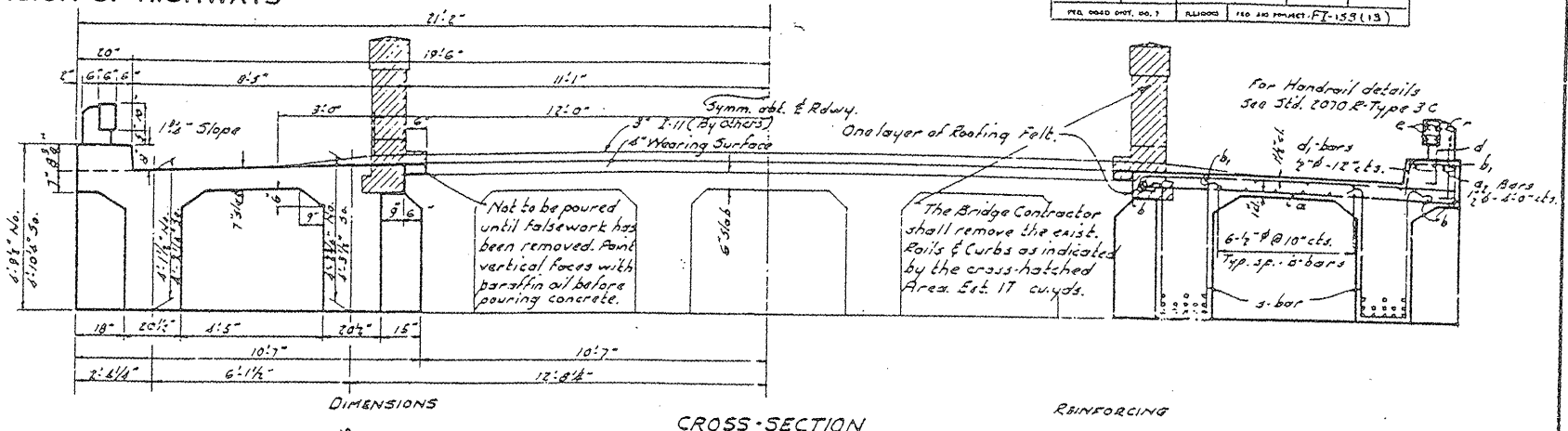
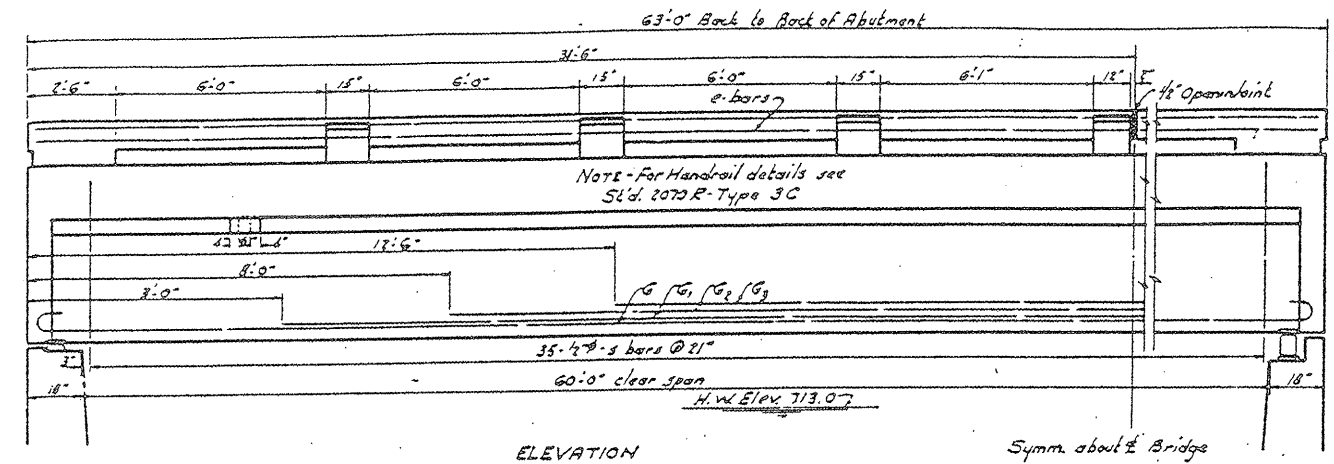


31.0' on N.E. Wing Existing Bridge Elev. 720.95

STATE OF ILLINOIS
DEPARTMENT OF PUBLIC WORKS & BUILDINGS
DIVISION OF HIGHWAYS

PROJECT NO.	SECTION	COUNTY	TOTAL SHEETS	SHEET NO.
80	125B-Y	KNOX	25	21
SHEET NO. 4 SHEETS				



GENERAL NOTES

Class X Concrete shall be used throughout except as noted.

Handrail Concrete shall be used in Rails & Posts.

Concrete Floor Slab shall be finished in accordance with Art. 61.3C of the Standard Specifications.

Handrail and Curbs shall not be poured until after falsework has been removed.

All structural steel shall receive one shop coat of red lead paint & two field coats of aluminum paint. Shop inspection by Ill. Div. of Highways course painting required.

All paint shall be furnished & applied by the Contractor.

Contract unit price each for Expansion Bolts shall include furnishing, drilling holes, and setting Expansion Bolts.

Rollers, Bearing Ris, Lead & Pintles, and Anchor Bolts shall be finished painted, and set according to Art. 54.3 (d) of the Standard Specifications, and are included for payment as structural steel.

The Bridge Contractor shall excavate the channel as shown in sketch and dispose of excavated material as directed by the Engineer.

Attaching Wire Fence contract unit price per sq. yd. shall include installing and attaching wire fence in accordance with Special Provisions.

BILL OF MATERIAL - SUPERSTRUCTURE

Bar No.	Size	Length	Shape
a	1/2"	10'-9"	—
a1	3/4"	10'-9"	—
a2	3/4"	12'-6"	—
b	3/4"	21'-9"	—
b1	3/4"	21'-9"	—
d	5/8"	2'-9"	—
d1	5/8"	15'-0"	—
d2	5/8"	7'-0"	—
e	1/2"	30'-3"	—
e1	1/2"	10'-5"	—
f	1/4"	66'-0"	—
g	1/2"	57'-0"	—
g1	1/2"	47'-0"	—
g2	1/2"	38'-0"	—
r	1/2"	2'-3"	—
s	1/2"	9'-9"	—

Cl. X Concrete	Cu. Yds.	96.6
Handrail Concrete	Cu. Yds.	3.0
Reinforcement Bars	Lbs.	23,755
Structural Steel	Lbs.	2,120
Concrete Removal	Cu. Yds.	17.0
Name Plate	Ev.	1

DESIGN STRESSES

Super Conc.	1,200
Substr. Conc.	800
Reinf. steel	20,000
Struct. steel	18,000
Loading H-20-64	

Item	Super	No. Abt.	So. Abt.	Total
Untreated Piles 10' lg.		480	540	1020
Treated Piles 22' lg.			396	396
Channel Excavation		644		644
Class X Concrete	96.6	124.1	140.8	361.5
Handrail Conc.	Cu. Yds.	3.0		3.0
Reinforcement Bars	Lbs.	23,755	6,480	30,235
Structural Steel	Lbs.	2,120		2,120
Concrete Removal	Cu. Yds.	17.0	2.00	19.0
Name Plate	Ev.	1		1
Attach. Wire Fence Sq. Yds.			59	59
Expansion Bolts "A" Ev.		150	148	298
Expansion Bolts "B" Ev.			16	16
Expansion Bolts "C" Ev.		14		14

WATERWAY DATA

Drainage Area	15,500 Acres
Required Opening	417'0"
Present Opening	382'0"
Proposed Opening	440'0"
c (Talbot's formula)	0.3

DESIGNED: [Signature]

CHECKED: [Signature]

DRAWN: [Signature]

CHECKED: [Signature]

EXAMINED: [Signature]

PASSED: [Signature]

APPROVED: [Signature]

STA. 150+65
BUILT 19 BY
STATE OF ILLINOIS
S.A.I. RTE. 80 SEC. 125-B-Y
F.A. PROJ. FI-155(13)
LOADING H-20

PROJECT FI-155(13)
S.A.I. RTE. 80 F.A. RTE. 59
SECTION 125 B-Y
KNOX CO.
STA. 150+65