

### INDEX TO SHEETS

Sheet No.	Title Page
1	Standard Cross Sections 1232, 1250
2	Standard Gutter Section and Outlet No. 1209 For Future Gutter Section
3	Plan And Profile Sta. 118+50 To Sta. 120+00
4	Sta. 120+00 To Sta. 150+00
5	Sta. 150+00 To Sta. 180+00
6	Sta. 180+00 To Sta. 210+00
7	Sta. 210+00 To Sta. 240+00
8	Sta. 240+00 To Sta. 300+00
9	Sta. 300+00 To Sta. 330+00
10	Sta. 330+00 To Sta. 356+47
11	To 34 Inclusive Cross Sections
12	Standard Culvert Design No. 828-1, 828-4
13	Sta. 126+70, 130+82
14	Special Sta. 163+65, 170+48, 175+37, 175+37
15	Sta. 191+10, 191+10, 201+90, 205+35
16	Sta. 216+54, 226+50, 244+80, 244+80
17	Sta. 252+00, 261+20, 271+80, 271+95
18	Sta. 290+43, 293+75, 322+00, 327+42
19	Bridge Sta. 150+65, Sheets 1, 2, 3, 4 of 4 sheets
20	Sta. 344+30, 1 of 1
21	Sta. 318+53, 1 of 2
22	Sta. 318+53, 2 of 2
23	Standards 1177
24	1162

## PROJECT 155, SECTIONS 125A, 125B, KNOX CO.

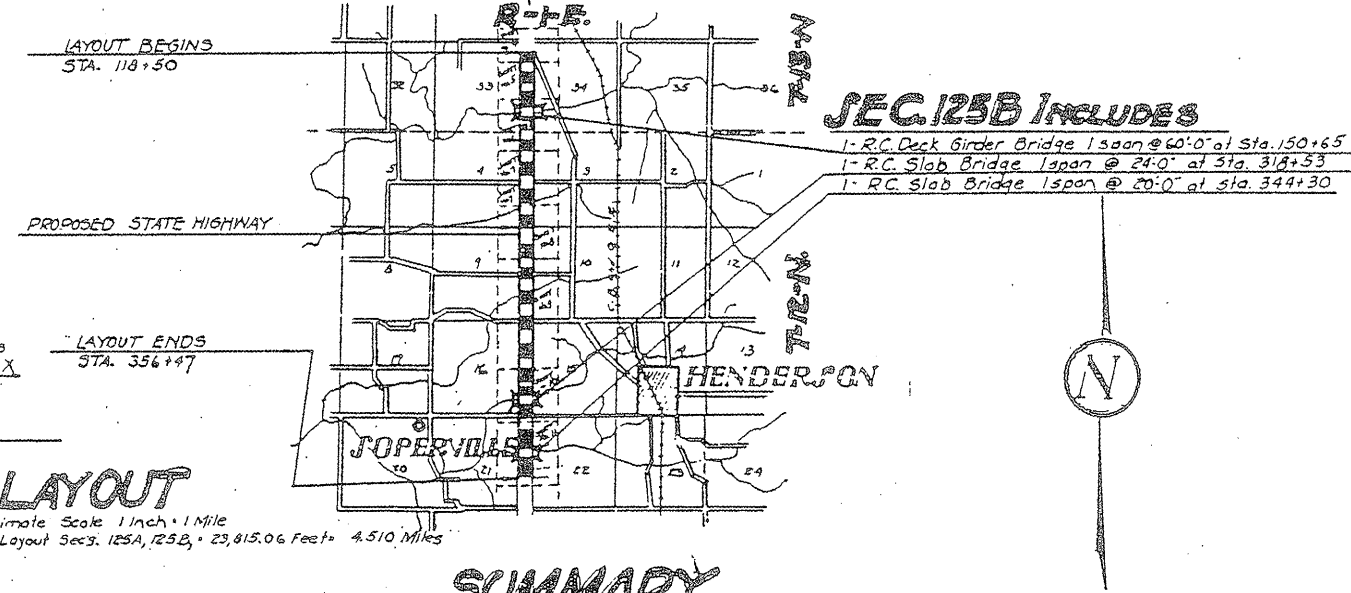
From a point near the N.E. Cor of Sec. 33, T13.N., R1E. of the 4th P.M.  
To a point near the N.E. Cor of the S.E. 1/4, of Sec. 21, T12. N. R.1.E. of the 4th P.M.  
-RIO 3 Mi.

### SUMMARY OF QUANTITIES

SEC. 125A		SEC. 125B	
67,815 Cu. Yds. Class A Excavation	9625 Cu. Yds. Class A Concrete	137 Cu. Yds. Class X Concrete	
20,000 Cu. Yds. Class B Excavation	129,340 Lbs. Reinforcing Steel		
500 Cu. Yds. Class C Excavation	1,500 Lin. Ft. Untreated Piles 10 Ton		
3,820 Cu. Yds. Class Borrow Excavation	1,440 Lin. Ft. Untreated Piles 12 Ton		
231 Rods Hedge Pulling	1,280 Lin. Ft. Untreated Piles 15 Ton		
90 Each Setting Of Right Of Way Markers	400 Lin. Ft. Untreated Piles 18 Ton		
465.9 Cu. Yds. Class A Concrete	1,646 Lbs. Rockers And Plates		
43,760 Lbs. Reinforcing Steel	3 Each Name Plates		
	199 Sq. Yds. Concrete Pavement (4')		

### SUMMARY OF CONCRETE

SEC. 125A		SEC. 125B	
Cu. Yds. Class A	Cu. Yds. Class X	Cu. Yds. Class A	Cu. Yds. Class X
14 Standard Culvert Design No. 828-1,3 26.6	19 Special Bridge Design Sta. 150+65 374.8	9.7	
Sta. 828-4,3 2.6	Sta. 318+53 241.7	4.0	
Sta. 828-1,8 2.8	Sta. 344+30 346.0		
Sta. 126+70 16.8	TOTAL 9625 137		
Sta. 130+82 14.3			
Sta. 163+65 11.5			
Sta. 170+48 4.7			
Sta. 175+37 14.2			
Sta. 175+37 2.5			
Sta. 191+10 5.5			
Sta. 191+10 5.5			
Sta. 201+90 59.9			
Sta. 205+33 11.3			
Sta. 216+54 59.6			
Sta. 226+50 12.5			
Sta. 244+80 5.5			
Sta. 244+80 7.8			
Sta. 252+00 54.7			
Sta. 261+20 19.3			
Sta. 271+80 5.5			
Sta. 271+95 6.5			
Sta. 290+43 34.6			
Sta. 293+75 15.1			
Sta. 322+00 44.0			
Sta. 327+42 12.5			
TOTAL 465.9 Cu. Yds. Class A			



**LAYOUT**  
Approximate Scale 1 Inch = 1 Mile  
Net Length of Layout Secs. 125A, 125B = 23,815.06 Feet = 4.510 Miles

### SUMMARY

Station to Station	Gross Length Along Transit Line	Corrections For Curves	Corrections For Relocations	Net Length of Layout Along Road	Omissions	Net Length to be Improved in Feet		Roadway Over Bridges			Sq. Yds. of Roadway			
						Feet	Feet	Sta.	Feet	Sta.	Feet	Sta.	Feet	Sta.
118+50 120+25	41'	175		175										
120+25 126+15	21'	590		590										
126+15 132+50	41'	635		635										
132+50 141+75	21'	125		125										
141+75 142+10	31'	35		35										
142+10 150+65	41'	823.5		823.5										
150+65 150+96.5	8'	63		63										
150+96.5 155+20	41'	423.5		423.5										
155+20 161+75	29'	655		655										
161+75 197+75	41'	3600	172+03.76 172+03.76 1281	3677.81										
197+75 200+50	21'	275		275										
200+50 203+25	41'	275		275										
203+25 215+00	21'	1175		1175										
215+00 218+10	41'	510		510										
218+10 227+00	21'	390		390										
227+00 244+80	41'	8400		8400										
244+80 244+80	21'	875		875										
244+80 244+80	41'	36.5		36.5										
244+80 318+66	8'	26		26										
318+66 327+75	41'	409.0		409										
327+75 327+75	21'	375		375										
327+75 327+75	41'	800		800										
327+75 327+75	21'	300		300										
327+75 344+150	21'	468.75		468.75										
344+150 344+150	35.5'	22.5		22.5										
344+150 344+150	35.5'	234		234										
344+150 344+150	21'	472		472										
344+150 356+47	21'	472		472										
TOTAL		23792.25		23792.25										

STATE OF ILLINOIS  
DEPARTMENT OF PUBLIC WORKS AND BUILDINGS  
DIVISION OF HIGHWAYS

SUBMITTED: Feb. 1, 1928  
THEO. PLACK

EXAMINED: March 15, 1928  
MORLEY

APPROVED: March 15, 1928  
FRANK J. SCHULTZ

APPROVED: March 15, 1928  
C. R. ...

4-27

an omission from Sec. 105A Only included in Sec. 105B