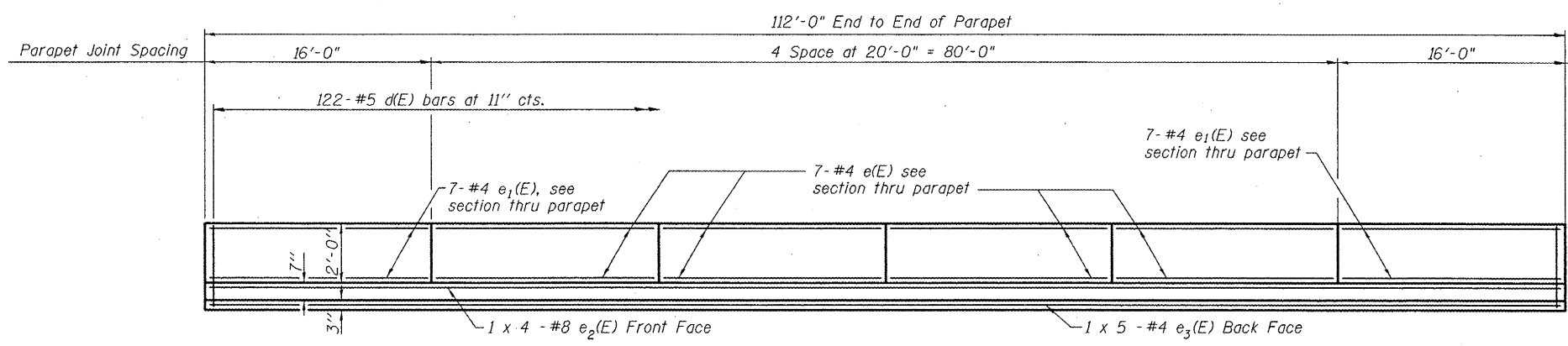


STATE OF ILLINOIS
DEPARTMENT OF TRANSPORTATION

ROUTE NO.	SECTION	COUNTY	TOTAL SHEETS	SHEET NO.	SHEET NO. 8
FAS 1190 (125BY)BR		KNOX	94	50	20 SHEETS
FED. ROAD DIST. NO. 7	ILLINOIS	FED. AID PROJECT			

Contract No. 68087



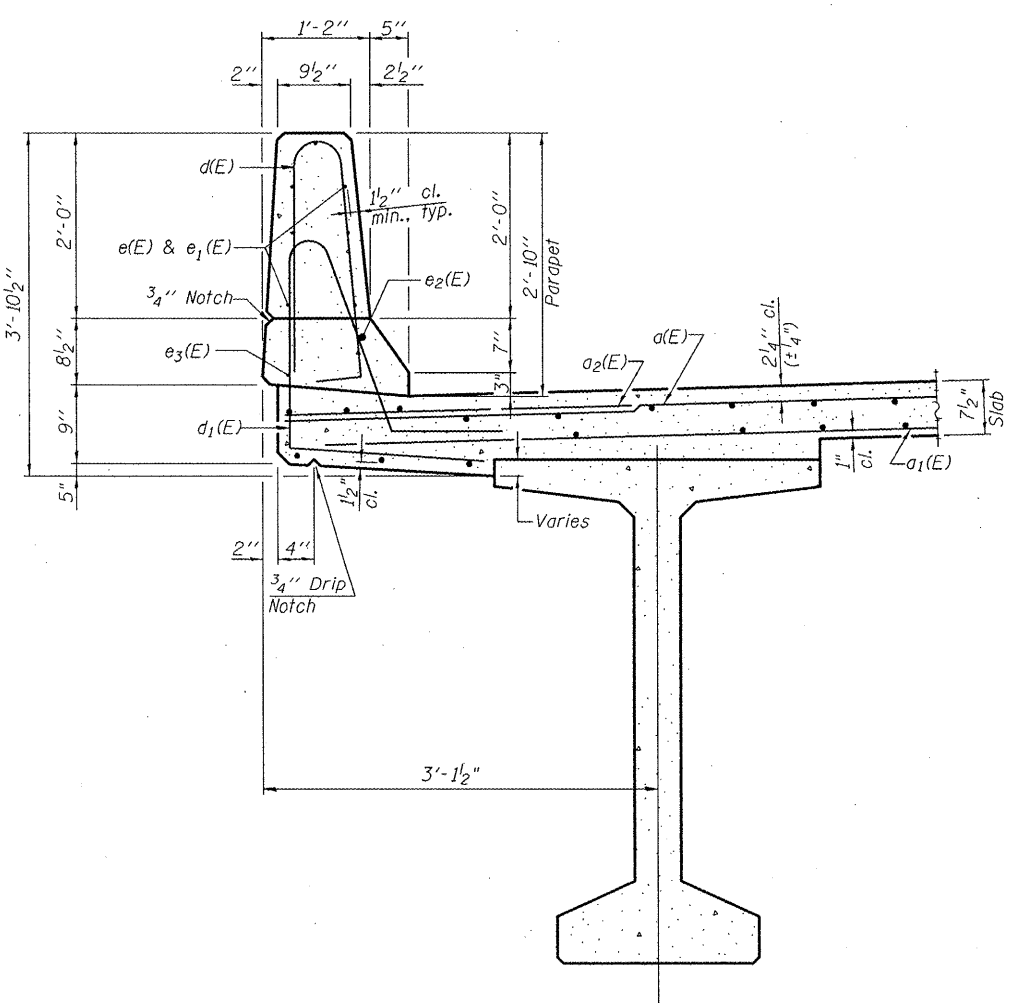
INSIDE ELEVATION OF PARAPET

MIN. BAR LAP
(Parapet)
#4 bar = 2'-0"
#8 bar = 5'-2"

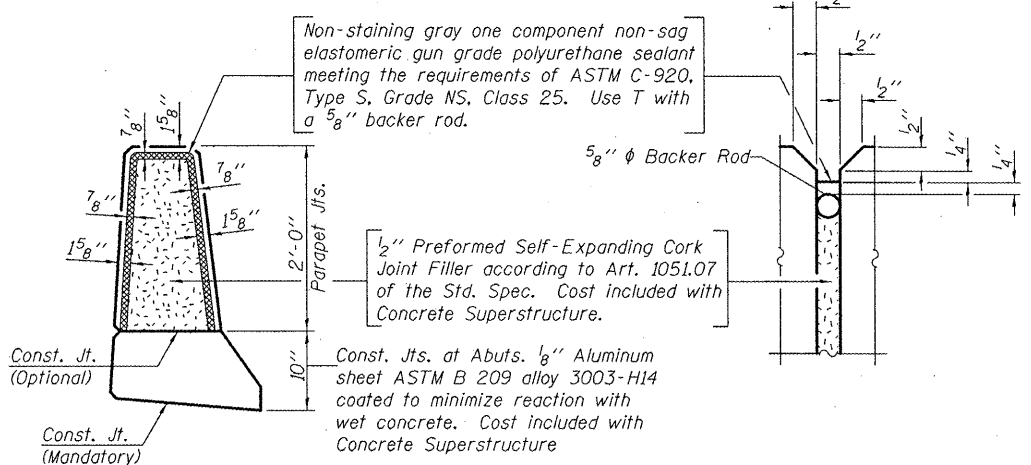
**SUPERSTRUCTURE
BILL OF MATERIAL**

Bar	No.	Size	Length	Shape
d(E)	358	#5	19'-2"	—
a1(E)	270	#5	18'-4"	—
a2(E)	180	#6	6'-6"	—
a3(E)	8	#5	18'-7"	—
b(E)	168	#5	30'-6"	—
b1(E)	170	#5	25'-0"	—
b2(E)	24	#4	20'-6"	—
d(E)	244	#5	5'-7"	—
d1(E)	244	#5	6'-8"	—
e(E)	56	#4	19'-9"	—
e1(E)	28	#4	15'-9"	—
e2(E)	8	#8	31'-10"	—
e3(E)	10	#4	24'-0"	—
m(E)	24	#6	19'-6"	—
m1(E)	24	#6	8'-3"	—
m2(E)	12	#6	10'-0"	—
m3(E)	8	#6	4'-2"	—
m4(E)	8	#6	1'-10"	—
s(E)	72	#5	6'-10"	—
s1(E)	48	#4	14'-8"	—
u(E)	252	#4	5'-4"	—
v(E)	80	#5	3'-10"	—
Reinforcement Bars, Epoxy Coated		Lbs.	32780	
Concrete Superstructure		Cu. Yds.	198.4	

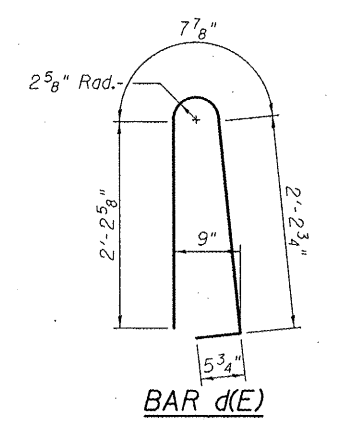
Bars indicated thus 1x4 - #8, etc., indicates 1 line of bars with 4 lengths per line.



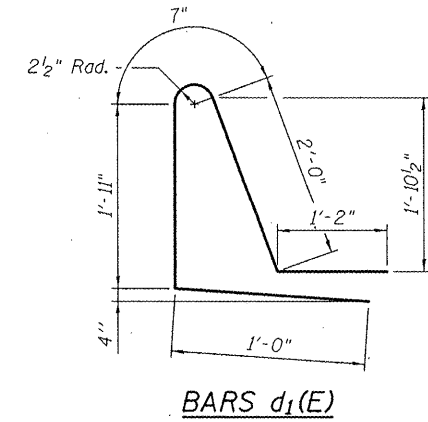
SECTION THRU PARAPET



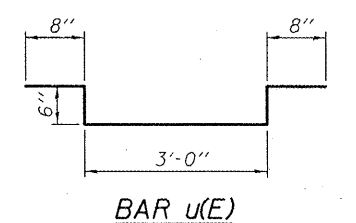
PARAPET JOINT DETAILS



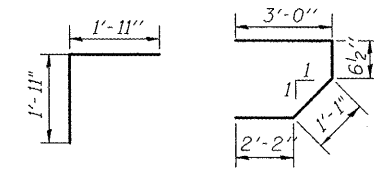
BAR d(E)



BARS d1(E)

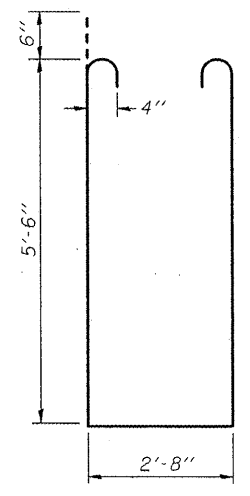


BAR u(E)



BAR v(E)

BAR s(E)



BAR s1(E)

DESIGNED	SMR
CHECKED	FT
DRAWN	JMI, DEH
CHECKED	SMR/FT

US ROUTE 150 OVER HENDERSON CREEK
F.A.S. ROUTE 1190 - SEC. (125BY)BR
KNOX COUNTY
STATION 150+71.00
STRUCTURE NO. 048-0088

SUPERSTRUCTURE DETAILS