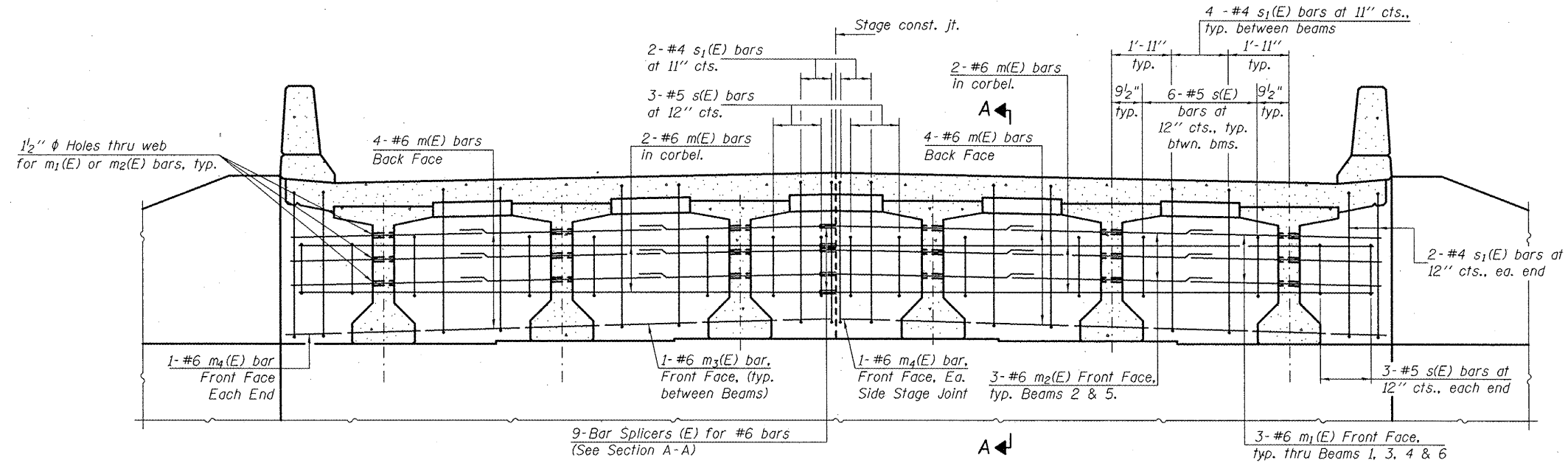


STATE OF ILLINOIS
DEPARTMENT OF TRANSPORTATION

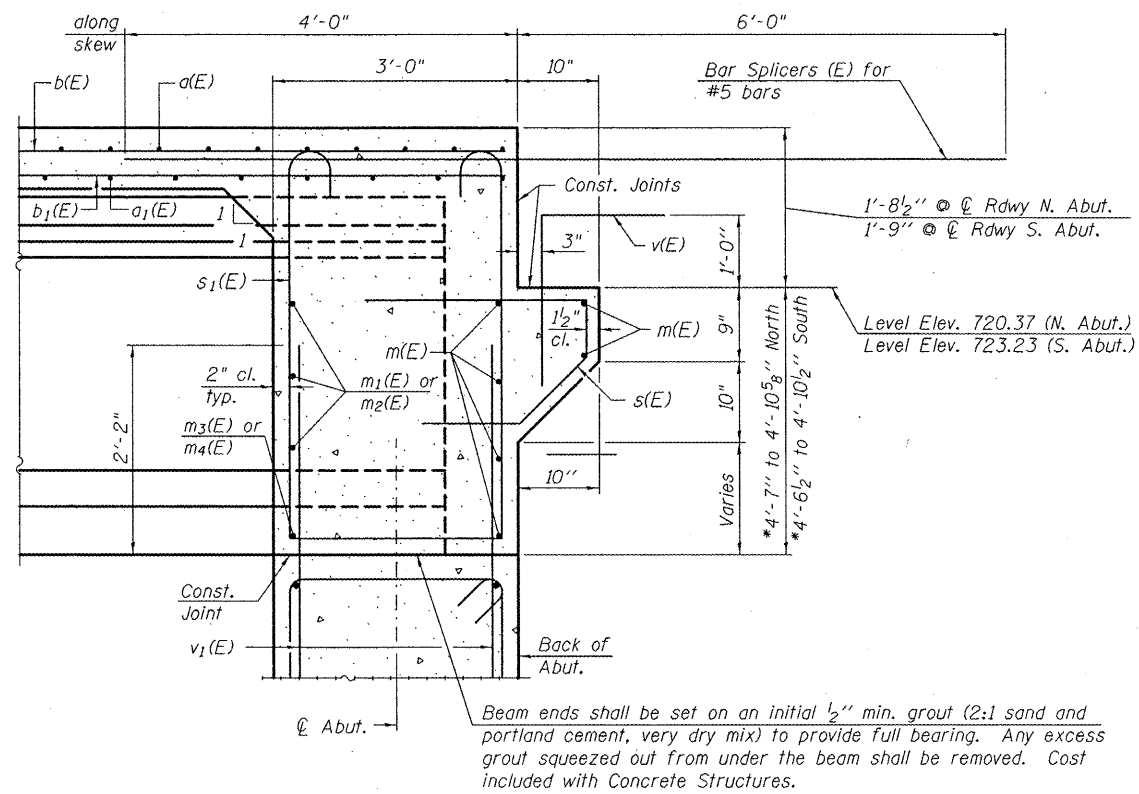
ROUTE NO.	SECTION	COUNTY	FORM SHEETS	SHEET NO.	SHEET NO. 9
FAS. 1190	(125BY)BR	KNOX	94	51	20 SHEETS
FED. ROAD DIST. NO. 7	ILLINOIS	FED. AID PROJECT			

Contract No. 68087



MIN. BAR LAP
#6 bar = 3'-4"

DIAPHRAGM ELEVATION AT ABUTMENTS



SECTION A-A

Dimensions at right angles to abutment, except as shown.
*Dimensions are given at the back of abutments.

Notes:
Work Sheets 7 thru 9 of 20 together.
Reinforcement bars in diaphragm are billed with superstructure on sheet 8 of 20.
Concrete in diaphragm is included with Concrete Superstructure on sheet 8 of 20.
For details of bars s(E), and s1(E) see sheet 8 of 20.
The s(E) and s1(E) bars shall be placed parallel to the beams.
Spacing for these bars shall be at right angles to the beams.
See sheet 13 of 20 for holes thru web for m1(E) & m2(E) bars.
For bar splicer (E) details, see sheet 18 of 20.

DESIGNED	SMR
CHECKED	FT
DRAWN	JMI, DEH
CHECKED	SMR/FT

US ROUTE 150 OVER HENDERSON CREEK
F.A.S. ROUTE 1190 - SEC. (125BY)BR
KNOX COUNTY
STATION 150+71.00
STRUCTURE NO. 048-0088

DIAPHRAGM DETAILS