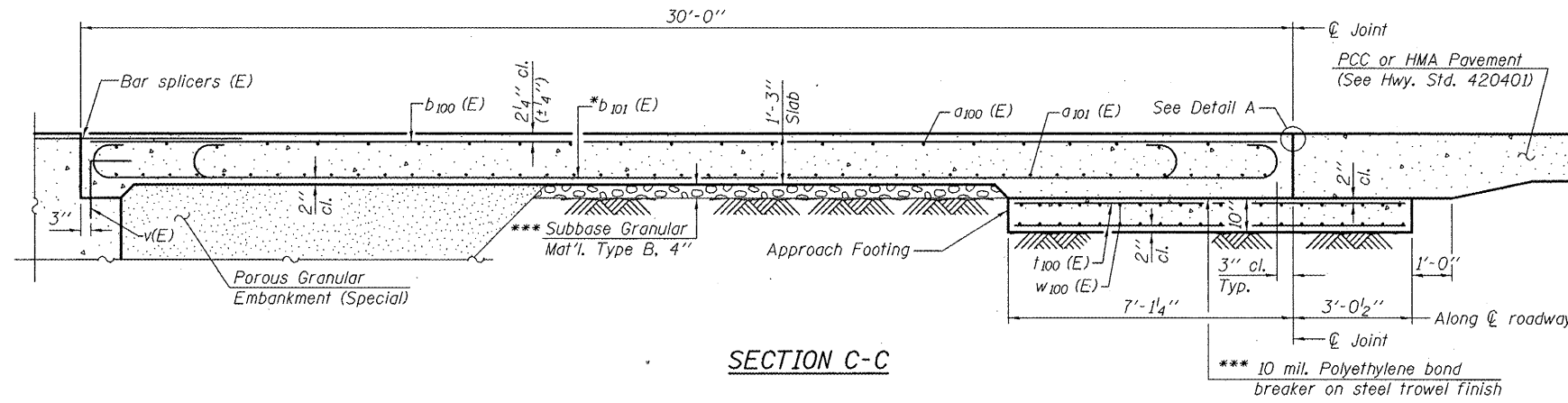


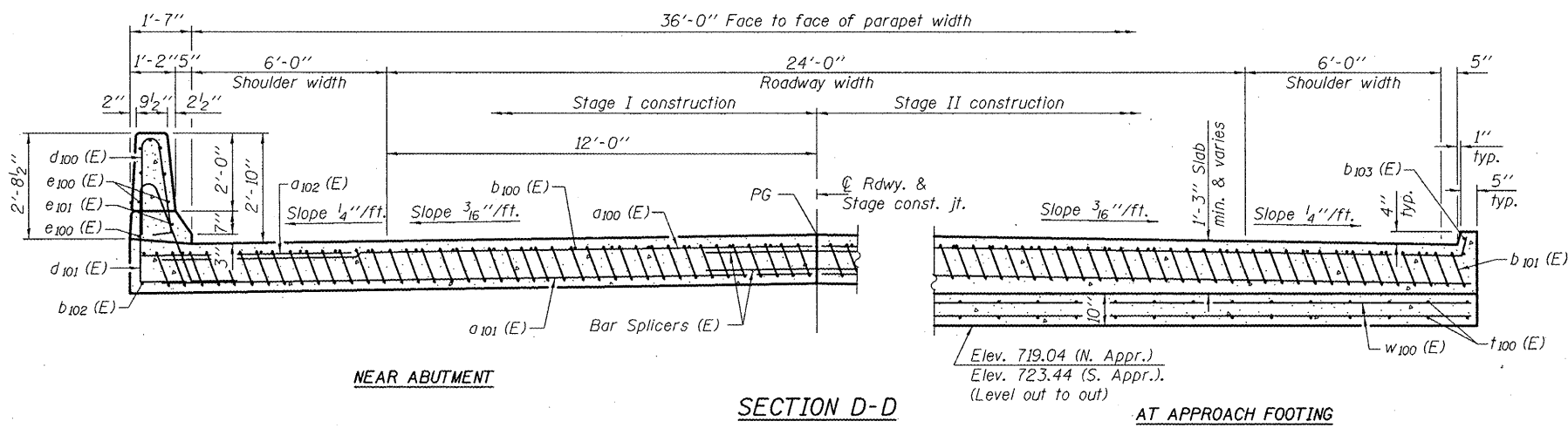
STATE OF ILLINOIS  
DEPARTMENT OF TRANSPORTATION

ROUTE NO.	SECTION	COUNTY	SHEET NO.	SHEET
FAS 1190 (125BY)BR		KNOX	94-53	20 SHEETS
FED. ROAD DIST. NO. 7	ILLINOIS	FED. AID PROJECT		

Contract No. 68087



SECTION C-C

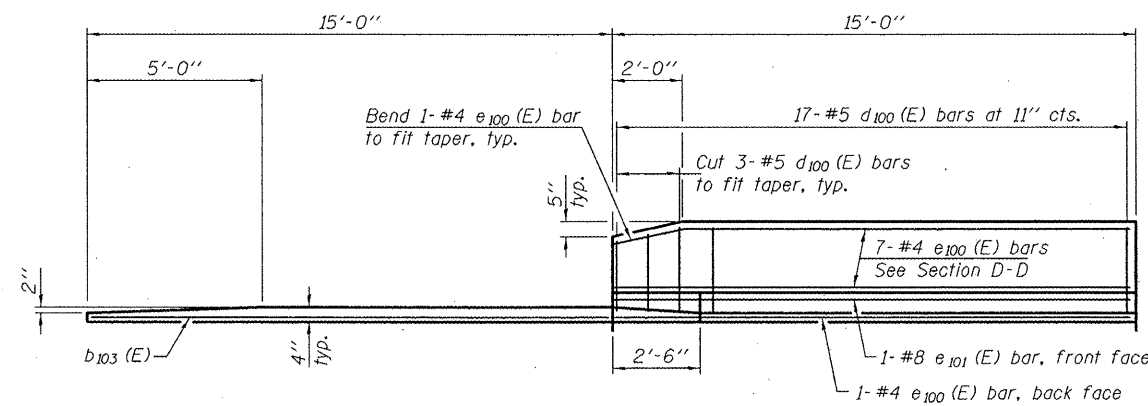


SECTION D-D

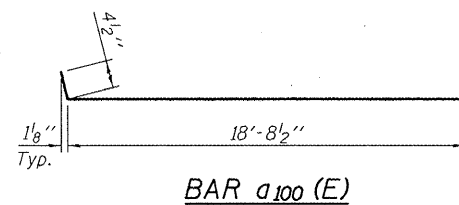
(See Plan for dimensions not shown)

NEAR ABUTMENT

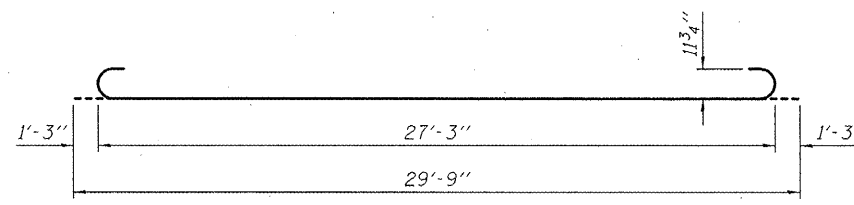
AT APPROACH FOOTING



VIEW E-E



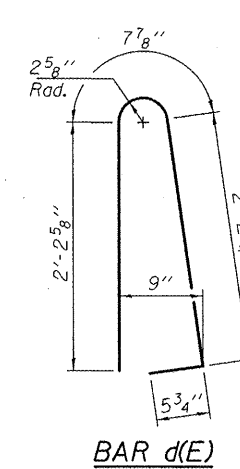
BAR a100 (E)



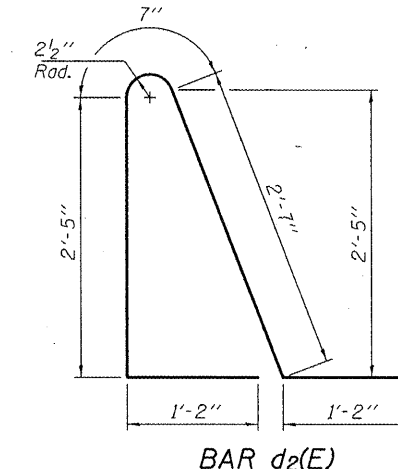
BAR b101 (E)

Notes:

- See sheet 10 of 20 for Detail A and View B-B.
- Approach slab and parapet concrete shall be paid for as Concrete Superstructure.
- Approach footing concrete shall be paid for as Concrete Structures.
- Reinforcement shall be paid for as Reinforcement Bars, Epoxy Coated.
- For v(E) bar details, see sheets 8 and 9 of 20.
- The approach footing maximum applied service bearing pressure (Qmax) = 2.0 ksf.
- For bar splicer details, see sheet 18 of 20.
- Cost of excavation for approach footing included with Concrete Structures.
- For Porous Granular Embankment (Special) and drainage treatment details, see sheet 1 of 20.
- For additional parapet details, see sheet 8 of 20.



BAR d(E)



BAR d2(E)

- \* Tilt #9 b101 (E) bars as required to maintain clearance.
- \*\*\* Cost included with Concrete Superstructure.

TWO APPROACHES  
BILL OF MATERIAL

Bar	No.	Size	Length	Shape
a100 (E)	100	#4	19'-1"	┌───┐
a101 (E)	184	#5	18'-11"	┌───┐
a102 (E)	48	#6	6'-6"	┌───┐
b100 (E)	64	#4	29'-8"	┌───┐
b101 (E)	184	#9	29'-9"	┌───┐
b102 (E)	4	#4	14'-8"	┌───┐
b103 (E)	4	#4	14'-6"	┌───┐
d100 (E)	68	#5	5'-7"	┌───┐
d101 (E)	68	#5	7'-11"	┌───┐
e100 (E)	32	#4	14'-8"	┌───┐
e101 (E)	4	#8	14'-8"	┌───┐
t100 (E)	160	#4	9'-9"	┌───┐
w100 (E)	160	#5	18'-10"	┌───┐
Concrete Superstructure		Cu. Yd.	119.9	
Concrete Structures		Cu. Yd.	23.8	
Reinforcement Bars, Epoxy Coated		Pound	30940	

(Sheet 2 of 2)

US ROUTE 150 OVER HENDERSON CREEK  
F.A.S. ROUTE 1190 - SEC. (125BY)BR  
KNOX COUNTY  
STATION 150+71.00  
STRUCTURE NO. 048-0088

BRIDGE APPROACH  
SLAB DETAILS

DESIGNED	SMR
CHECKED	FT
DRAWN	MBM
CHECKED	SMR/FT