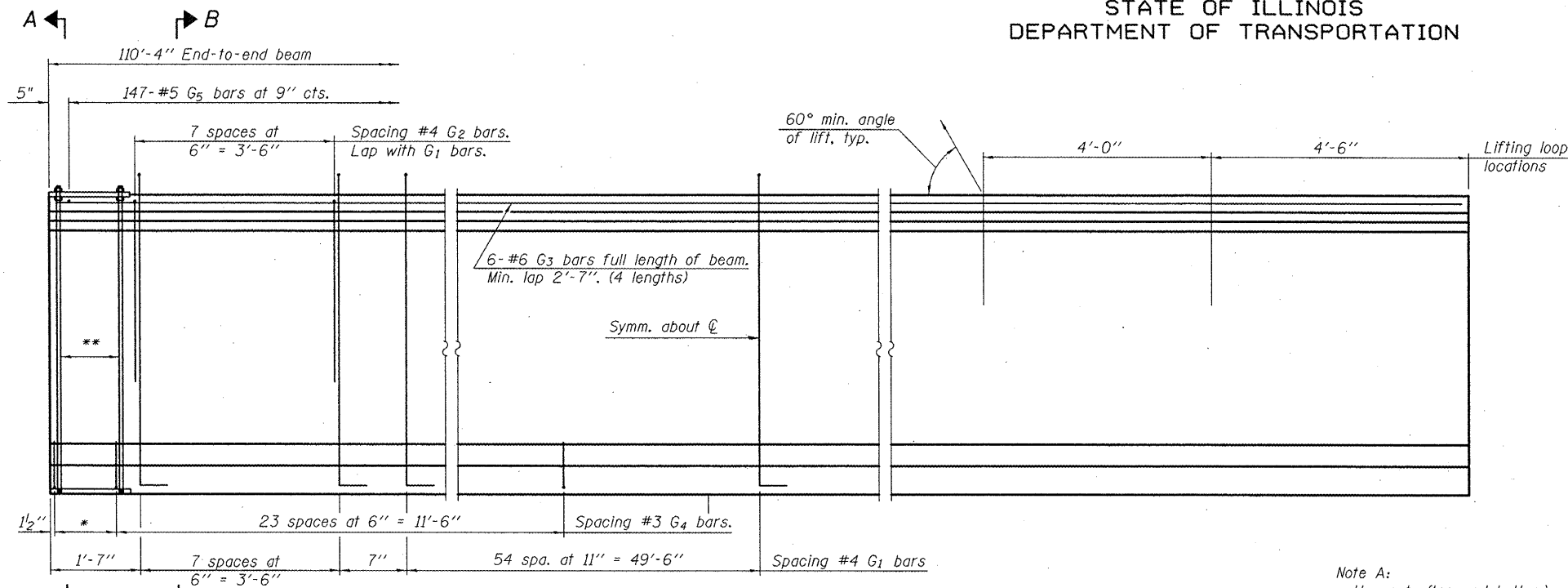


STATE OF ILLINOIS  
DEPARTMENT OF TRANSPORTATION

ROUTE NO.	SECTION	COUNTY	TOTAL SHEETS	SHEET NO.	SHEET NO. 13 20 SHEETS
FAS 1190	(125BY)BR	KNOX	94	55	
FED. ROAD DIST. NO. 7	ILLINOIS	FED. AID PROJECT-			

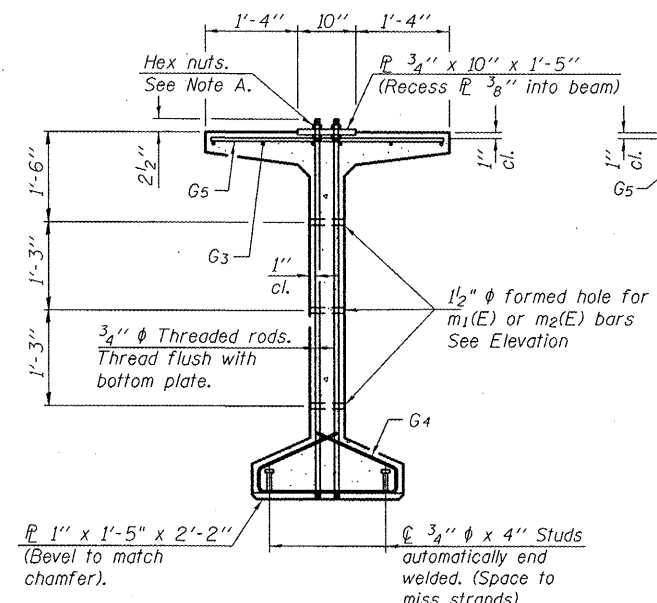
Contract No. 68087



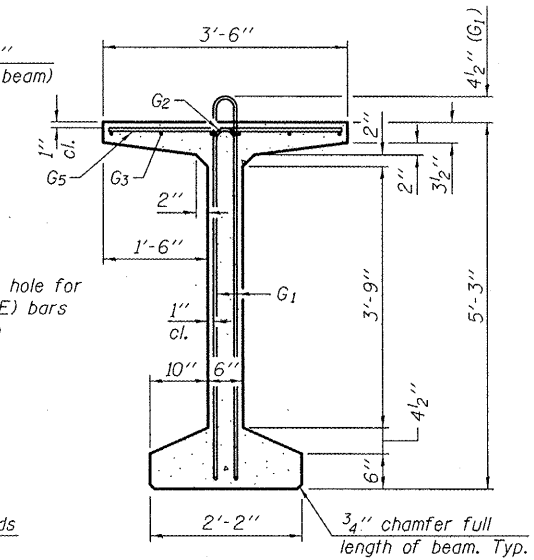
**ELEVATION OF BEAM**  
(Showing reinforcement & dimensions)

\* 4 spaces at 3/4" = 1'-1".  
\*\* 5-3/4" φ threaded rods at 3/4" cts., each face.

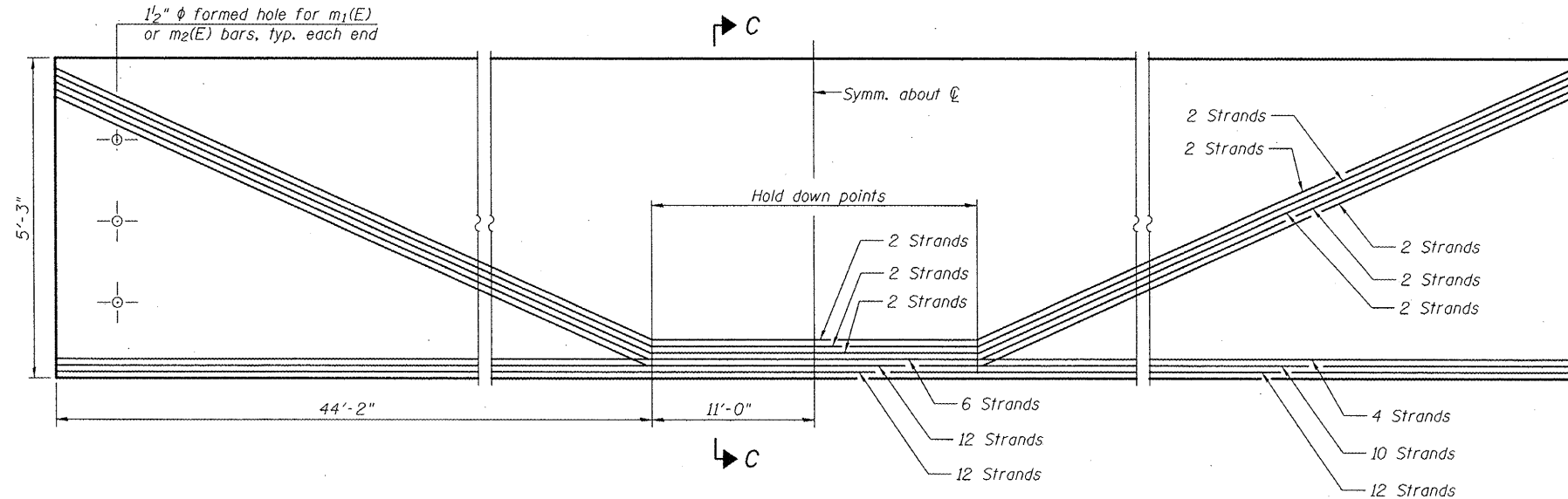
Note A:  
Hex nuts (top and bottom) with lock washers (top). Only tighten sufficiently to compress lock washers.



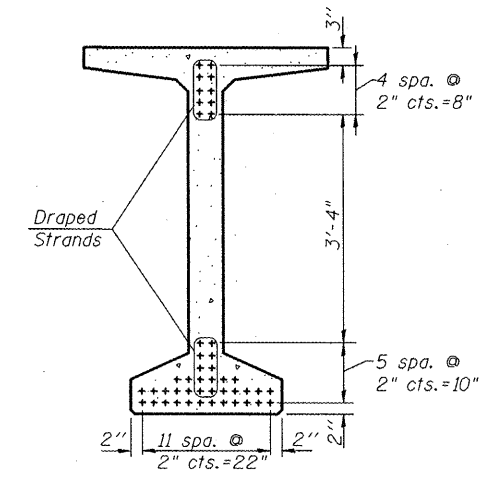
**SECTION A-A**



**SECTION B-B**



**ELEVATION OF BEAM**  
(Showing prestressing steel)



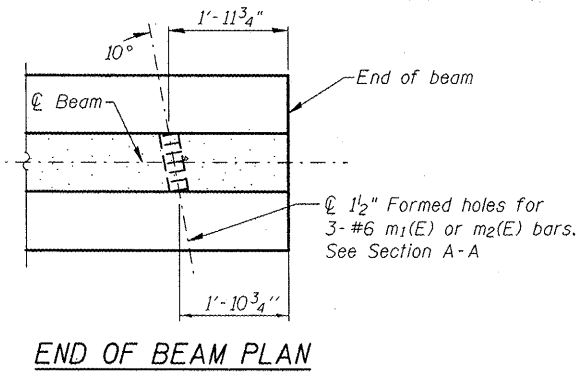
**SECTION C-C**

**BAR LIST  
ONE BEAM ONLY**

Bar	No.	Size	Length	Shape
G <sub>1</sub>	125	#4	11'-11"	⌈
G <sub>2</sub>	16	#4	10'-2"	⌈
G <sub>3</sub>	24	#6	29'-6"	⌈
G <sub>4</sub>	56	#3	4'-11"	⌈
G <sub>5</sub>	147	#5	3'-4"	⌈

Notes:  
See sheet 14 of 20 for additional details and Bill of Material.  
Required release strength, f'cl, shall be 5,000 psi.

DESIGNED	SMR
CHECKED	FT
DRAWN	JMI, DEH
CHECKED	SMR/FT



**END OF BEAM PLAN**

US ROUTE 150 OVER HENDERSON CREEK  
F.A.S. ROUTE 1190 - SEC. (125BY)BR  
KNOX COUNTY  
STATION 150+71.00  
STRUCTURE NO. 048-0088

**BEAM ELEVATIONS AND DETAILS**