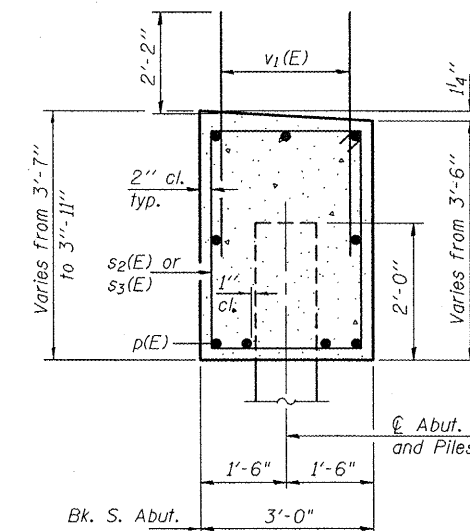
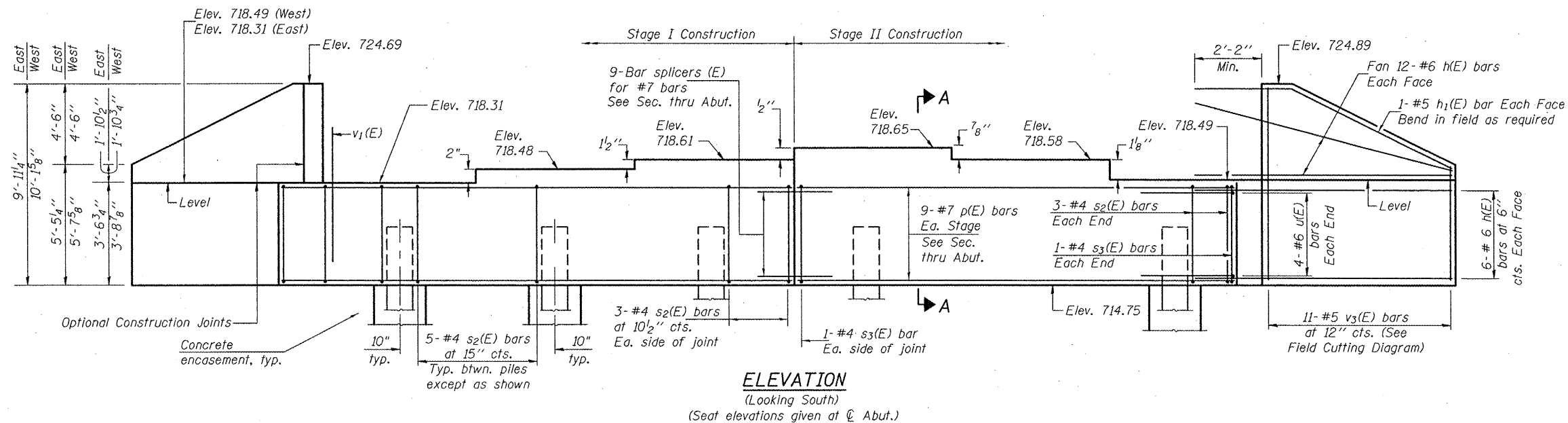


STATE OF ILLINOIS
DEPARTMENT OF TRANSPORTATION

ROUTE NO.	SECTION	COUNTY	TOTAL SHEETS	SHEET NO.
FAS 1190	(125BY)BR	KNOX	94	58
FED. ROAD DIST. NO. 7		ILLINOIS	FED. AID PROJECT	

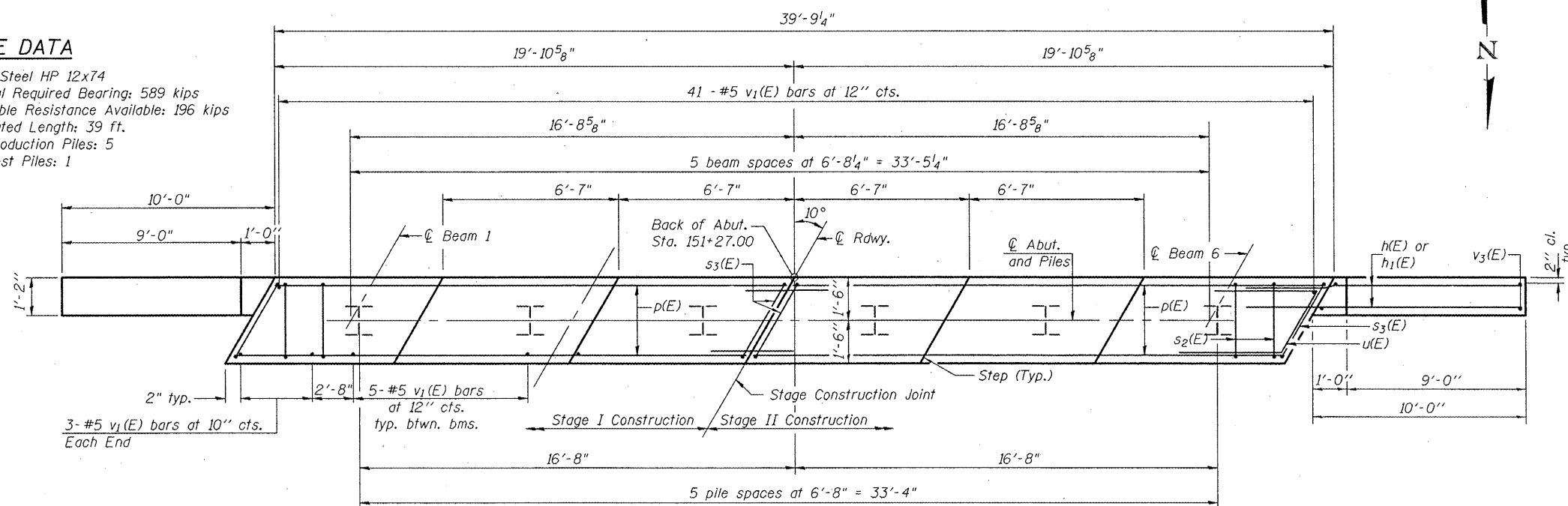
SHEET NO. 16
20 SHEETS

Contract No. 68087



PILE DATA

Type: Steel HP 12x74
Nominal Required Bearing: 589 kips
Allowable Resistance Available: 196 kips
Estimated Length: 39 ft.
No. Production Piles: 5
No. Test Piles: 1

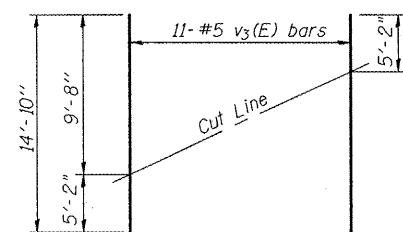


BILL OF MATERIAL

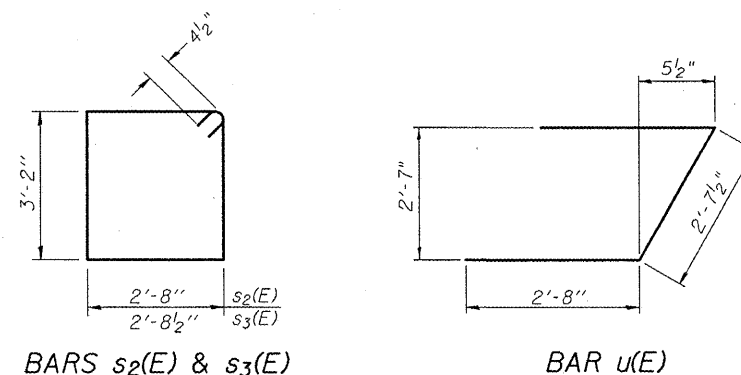
Bar	No.	Size	Length	Shape
h(E)	72	#6	12'-9"	—
h1(E)	4	#5	13'-0"	—
p(E)	18	#7	19'-6"	—
s2(E)	32	#4	12'-5"	□
s3(E)	4	#4	12'-6"	□
u(E)	8	#6	8'-0"	┘
v1(E)	72	#5	4'-4"	—
v3(E)	22	#5	14'-10"	—
Concrete Structures		Cu. Yd.	23.1	
Reinforcement Bars, Epoxy Coated		Pound	3210	
Structure Excavation		Cu. Yd.	106	
Furnishing Steel Piles, HP12x74		Foot	195	
Driving Piles		Foot	195	
Test Pile, Steel HP12x74		Each	1	
Concrete Encasement		Cu. Yd.	2.1	

Notes:
Pour steps monolithically with cap.
For details of piles and concrete encasement, see sheet 17 of 20.
For details of bar splicers, see sheet 18 of 20.

DESIGNED	SMR
CHECKED	FT
DRAWN	BWP, ALN
CHECKED	SMR/FT



Order v3(E) full length. Cut as shown and use remainder of bars in opposite face.



US ROUTE 150 OVER HENDERSON CREEK
F.A.S. ROUTE 1190 - SEC. (125BY)BR
KNOX COUNTY
STATION 150+71.00
STRUCTURE NO. 048-0088

SOUTH ABUTMENT