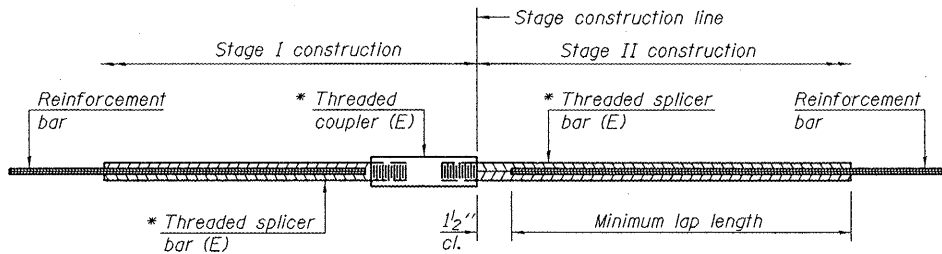


STATE OF ILLINOIS  
DEPARTMENT OF TRANSPORTATION

ROUTE NO.	SECTION	COUNTY	TOTAL SHEETS	SHEET NO.
FAS 1190	(125B)1BR	KNOX	94	60
FED. ROAD DIST. NO. 7	ILLINOIS	FED. AID PROJECT		

Contract No. 68087

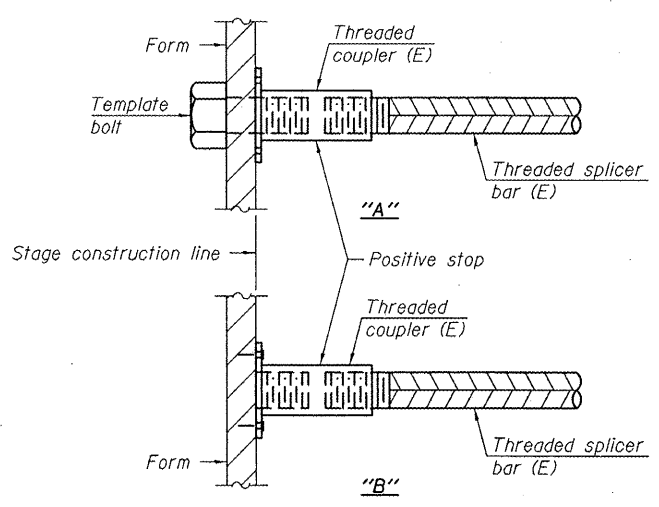


STANDARD BAR SPLICER ASSEMBLY

Bar size to be spliced	Minimum Lap Lengths				
	Table 1	Table 2	Table 3	Table 4	Table 5
3, 4	1'-5"	1'-11"	2'-1"	2'-4"	2'-3"
5	1'-9"	2'-5"	2'-7"	2'-11"	2'-10"
6	2'-1"	2'-11"	3'-1"	3'-6"	3'-4"
7	2'-9"	3'-10"	4'-2"	4'-8"	4'-6"
8	3'-8"	5'-1"	5'-5"	6'-2"	5'-10"
9	4'-7"	6'-5"	6'-10"	7'-9"	7'-5"

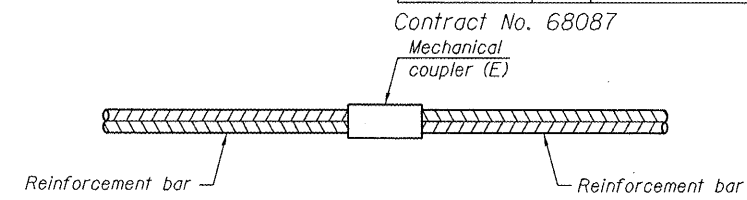
Table 1: Black bar, 0.8 Class C  
 Table 2: Black bar, Top bar lap, 0.8 Class C  
 Table 3: Epoxy bar, 0.8 Class C  
 Table 4: Epoxy bar, Top bar lap, 0.8 Class C  
 Table 5: Epoxy bar, Top bar lap, Class B  
 Threaded splicer bar length = min. lap length + 1/2" + thread length  
 Epoxy not required on Bar Splicer Assembly components used in conjunction with black bars.

Location	Bar size	No. assemblies required	Table for minimum lap length
Deck	#5	318	3
Diaphragms	#6	18	4
Abutments	#7	18	3
Approach (super.)	#4	50	4
Approach (super)	#5	92	3
Approach (sub)	#5	80	3



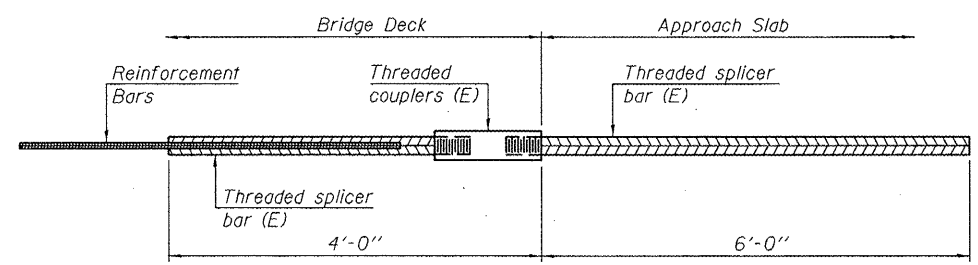
INSTALLATION AND SETTING METHODS

"A": Set bar splicer assembly by means of a template bolt.  
 "B": Set bar splicer assembly by nailing to wood forms or cementing to steel forms.  
 (E) : Indicates epoxy coating.



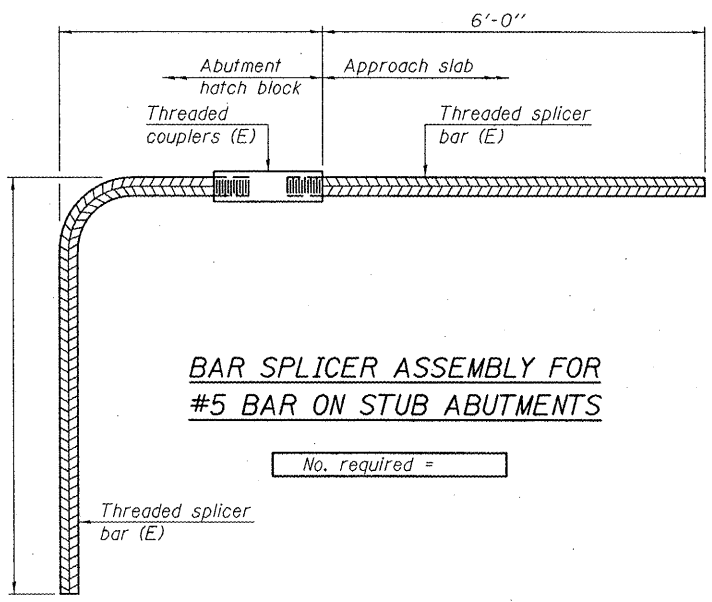
STANDARD MECHANICAL SPLICER

Location	Bar size	No. assemblies required



BAR SPLICER ASSEMBLY FOR #5 BAR ON INTEGRAL OR SEMI-INTEGRAL ABUTMENTS

No. required = 84



BAR SPLICER ASSEMBLY FOR #5 BAR ON STUB ABUTMENTS

No. required =

NOTES

Splicer bars shall be deformed with threaded ends and have a minimum 60 ksi yield strength.  
 All reinforcement shall be lapped and tied to the splicer bars.  
 Bar splicer assemblies shall be epoxy coated according to the requirements for reinforcement bars. See Section 508 of the Standard Specifications.  
 See special provision for Mechanical Splicers.  
 See approved list of bar splicer assemblies and mechanical splicers for alternatives.

DESIGNED	SMR
CHECKED	FT
DRAWN	KBF
CHECKED	SMR/FT

BSD-1 7-1-10

US ROUTE 150 OVER HENDERSON CREEK  
 F.A.S. ROUTE 1190 - SEC. (125B)1BR  
 KNOX COUNTY  
 STATION 150+71.00  
 STRUCTURE NO. 048-0088

BAR SPLICER ASSEMBLY AND MECHANICAL SPLICER DETAILS