

F.A.I. RTE.	SECTION	COUNTY	TOTAL SHEETS	SHEET NO.
57	(10-33 HB)BDR	CHAMPAIGN	27	1
		ILLINOIS	CONTRACT NO. 70924	

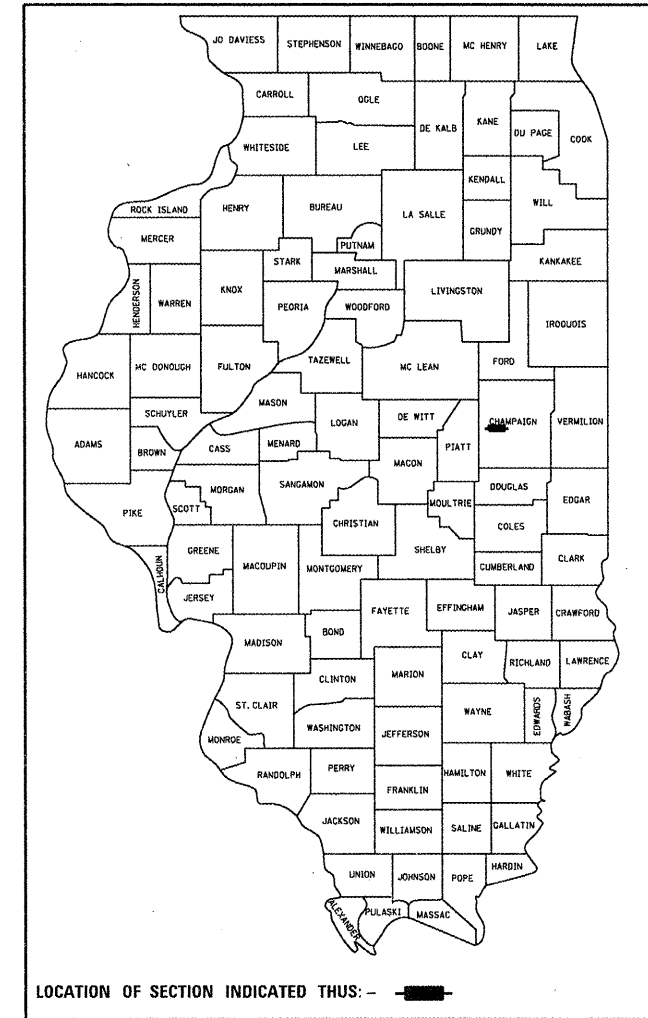
STATE OF ILLINOIS
DEPARTMENT OF TRANSPORTATION
DIVISION OF HIGHWAYS

PROPOSED HIGHWAY PLANS

F.A.I. ROUTE 57 (I-57)
SECTION (10-33 HB)BDR

BRIDGE DECK REPAIRS
KIRBY AVENUE OVER FAI 57
CHAMPAIGN COUNTY

D-95-031-11



FOR INDEX OF SHEETS, SEE SHEET NO. 2
FOR SUMMARY OF QUANTITIES, SEE SHEET NO. 3

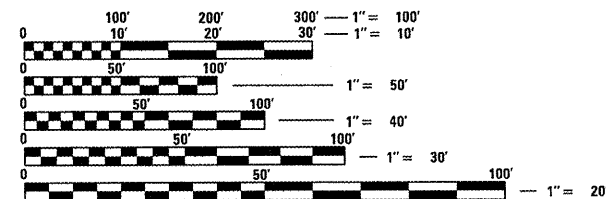
CURRENT TRAFFIC DATA

KIRBY / (FAI-57)

2011 ADT = 7,600 / (23,500)
2031 ADT = 10,900 / (32,500)
PU + PC % = 90.3 / (75.9)
SU % = 6.7 / (3.7)
MU% = 3.0 / (20.4)

DESIGN DESIGNATION

LOCAL STREET / (INTERSTATE)



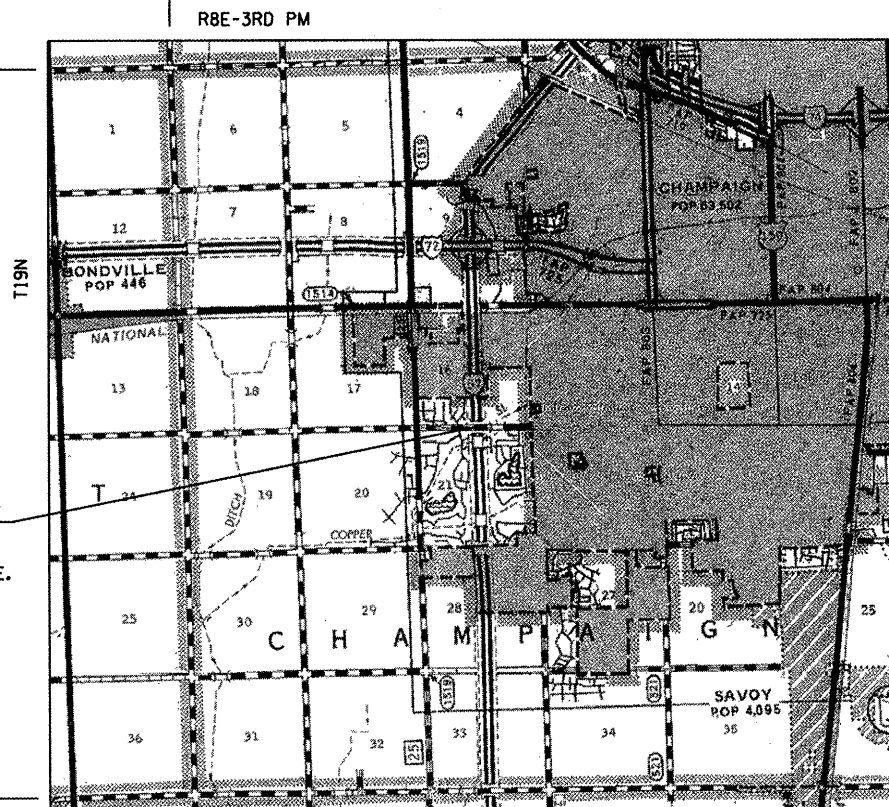
FULL SIZE PLANS HAVE BEEN PREPARED USING STANDARD ENGINEERING SCALES. REDUCED SIZED PLANS WILL NOT CONFORM TO STANDARD SCALES. IN MAKING MEASUREMENTS ON REDUCED PLANS, THE ABOVE SCALES MAY BE USED.

J.U.L.I.E.
JOINT UTILITY LOCATION INFORMATION FOR EXCAVATION
1-800-892-0123
OR 811 CHAMPAIGN TOWNSHIP

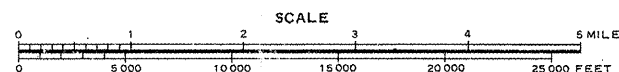
PROJECT ENGINEER: TIM BRANDENBURG
PROJECT MANAGER: TIM BRANDENBURG

CONTRACT NO. 70924

C-95-031-11



EXISTING S.N. 010-0103
KIRBY AVE. OVER FAI 57
STATION 403+34.43 @ FAI 57
24+88.29 @ KIRBY AVE.
PROPOSED STRUCTURE REPAIRS



GROSS LENGTH = 418.78 FT. = 0.079 MILE
NET LENGTH = 418.78 FT. = 0.079 MILE

STATE OF ILLINOIS
DEPARTMENT OF TRANSPORTATION
DIVISION OF HIGHWAYS

SUBMITTED 10/6 20 11
Joseph A. Rosenbaum
DEPUTY DIRECTOR OF HIGHWAYS, REGION ENGINEER
December 9 20 11
Scott E. Stitt P.E.
ACTING ENGINEER OF DESIGN AND ENVIRONMENT
December 9 20 11
William R. Fiedler
DIRECTOR OF HIGHWAYS, CHIEF ENGINEER

PRINTED BY THE AUTHORITY
OF THE STATE OF ILLINOIS