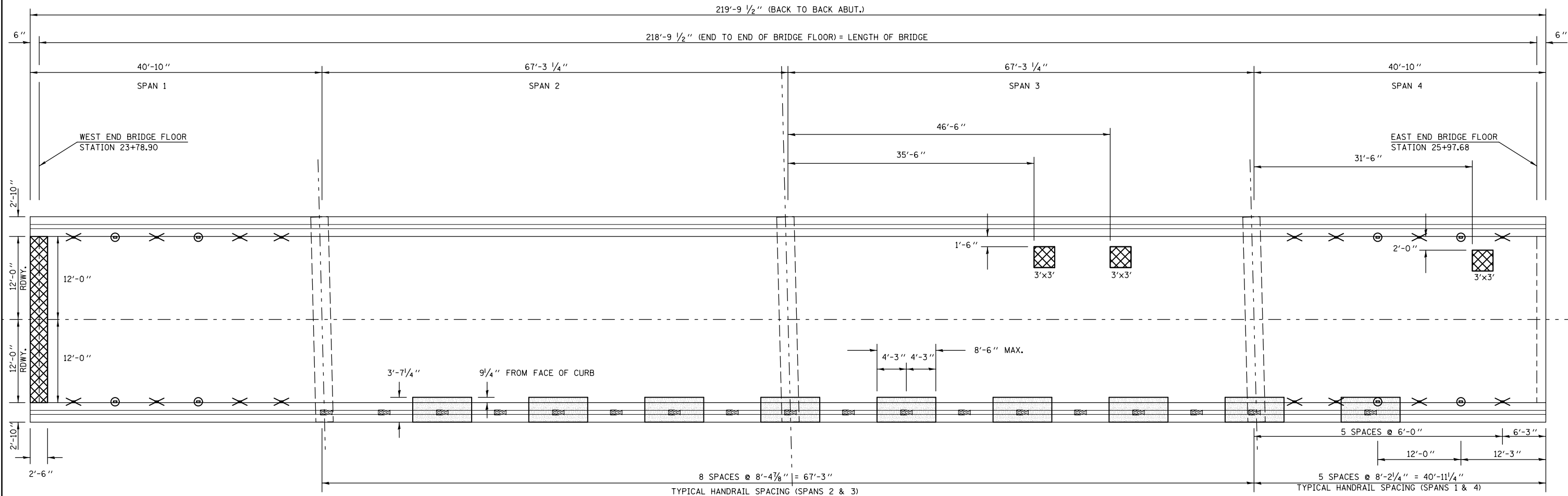


SUPERSTRUCTURE REPAIR PLAN

S.N. 010-0103



LEGEND

- CONCRETE REMOVAL & CONCRETE SUPERSTRUCTURE
- DECK SLAB REPAIR, FULL-DEPTH
- PLUG EXISTING DECK DRAINS
- DECK DRAIN EXTENSIONS

NOTE:

EXISTING BARS SHALL BE REUSED, CLEANED, STRAIGHTENED AND INCORPORATED INTO THE NEW CONSTRUCTION.

PATCH SIZES SHOWN REPRESENT CONDITIONS AT THE TIME THE PLANS WERE COMPLETED. THE ACTUAL SIZES AND LOCATIONS OF PATCHING SHALL BE DETERMINED BY THE ENGINEER.

AREAS OF CONCRETE REMOVAL AND SUPERSTRUCTURE WERE IDENTIFIED JANUARY 19, 2011. SHOULD THE ENGINEER DETERMINE ADDITIONAL AREAS FOR REPAIR ADJACENT TO PROPOSED AREAS, REMOVAL AND REPLACEMENT SHALL BE STAGGERED. THE LENGTH OF REPAIR IS LIMITED TO A 8'-6" MAXIMUM.

SEE DECK DRAIN EXTENSIONS AND PLUG EXISTING DECK DRAINS DETAILS.

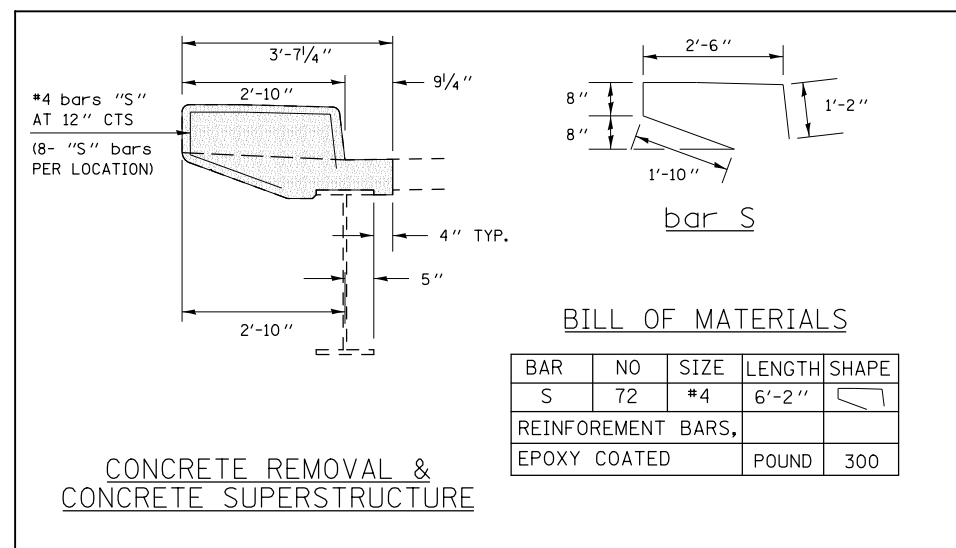
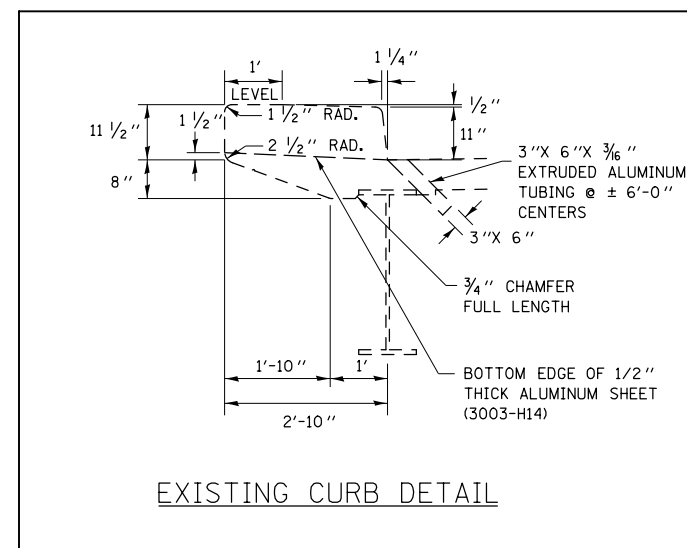
EXISTING HANDRAIL SHALL BE REMOVED AND RE-ERECTED. COST INCLUDED WITH CONCRETE REMOVAL AND CONCRETE SUPERSTRUCTURE. SEE HANDRAIL DETAILS FROM AS BUILT PLANS FOR RE-ERECTION.

BILL OF MATERIALS

BAR	NO	SIZE	LENGTH	SHAPE
S	72	#4	6'-2"	
REINFORCEMENT BARS, EPOXY COATED			POUND	300

BILL OF MATERIALS

ITEM	UNIT	TOTAL
CONCRETE REMOVAL	CU YD	12.3
CONCRETE SUPERSTRUCTURE	CU YD	12.3
DECK SLAB REPAIR (FULL-DEPTH, TY II)	SQ YD	9.7
PLUG EXISTING DECK DRAINS	EACH	16.0
DECK DRAIN EXTENSIONS	EACH	8.0
REINFORCEMENT BARS, EPOXY COATED	POUND	300.0



FILE NAME =	USER NAME = bucklesjj	DESIGNED - TJB	REVISED -
ei:\pw\work\p\dot\bucklesjj\d0265817\0570924-sht-Plan.dgn		DRAWN - JJB	REVISED -
PLOT SCALE = 48.0000' / in.		CHECKED -	REVISED -
PLOT DATE = 10/5/2011		DATE - 6/17/11	REVISED -

**STATE OF ILLINOIS
DEPARTMENT OF TRANSPORTATION**

**SUPER STRUCTURE REPAIR PLAN
S.N. 010-0103**

SCALE: SHEET NO. OF SHEETS STA. TO STA.

F.A.I. RTE.	SECTION	COUNTY	TOTAL SHEETS	SHEET NO.
57	(10-33HB)BDR	Champaign	27	10
				CONTRACT NO. 70924
ILLINOIS FED. AID PROJECT				