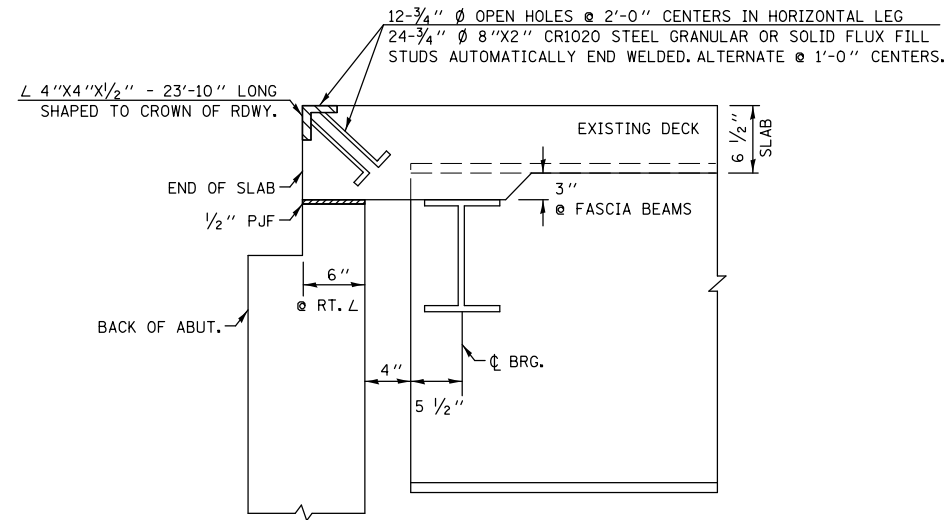
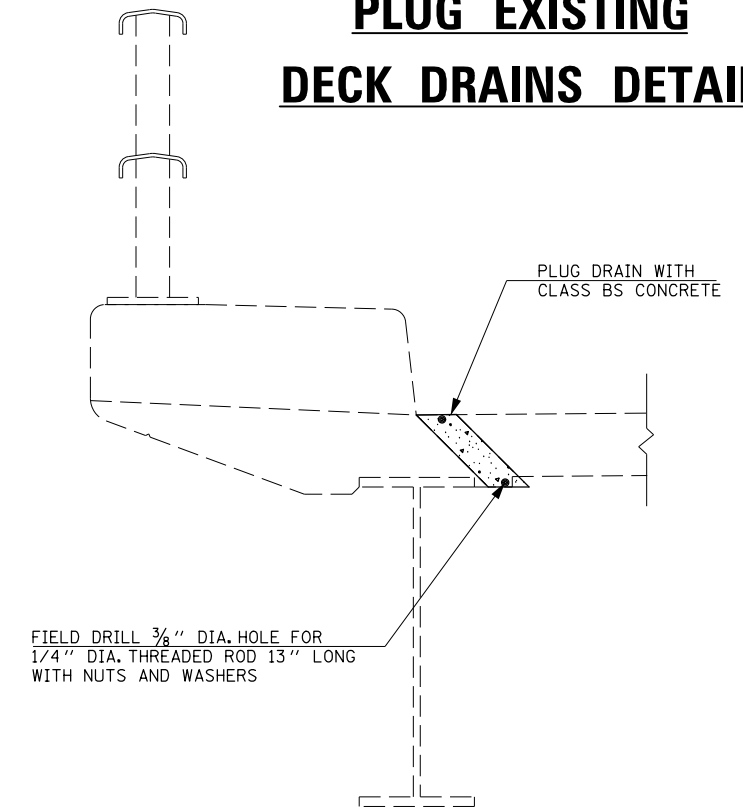


SECTION AT EXISTING JOINT

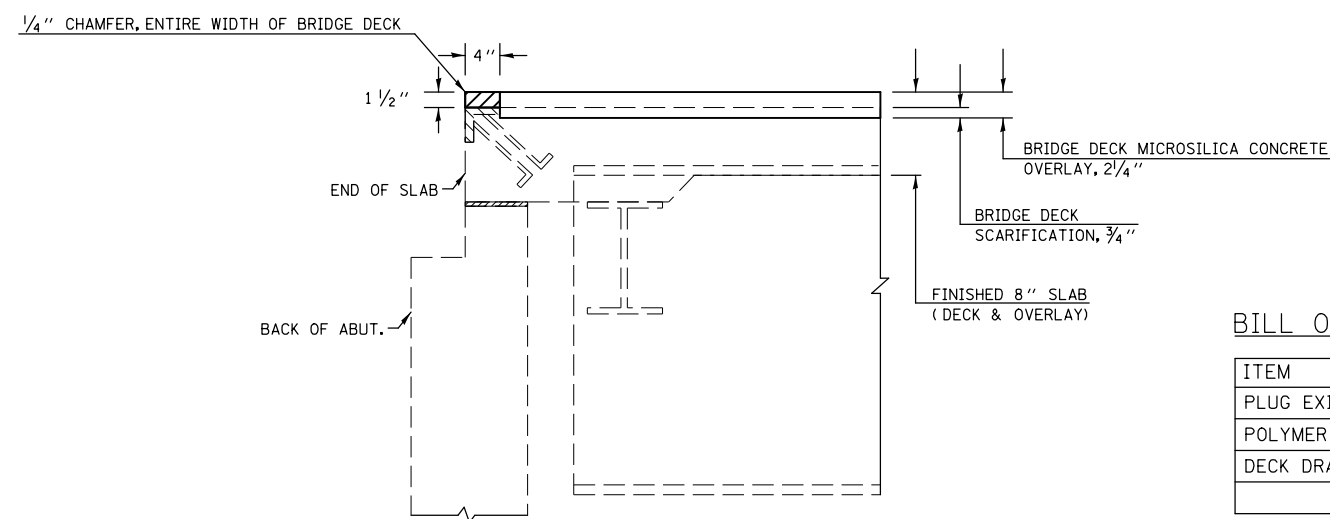



PLUG EXISTING DECK DRAINS DETAIL



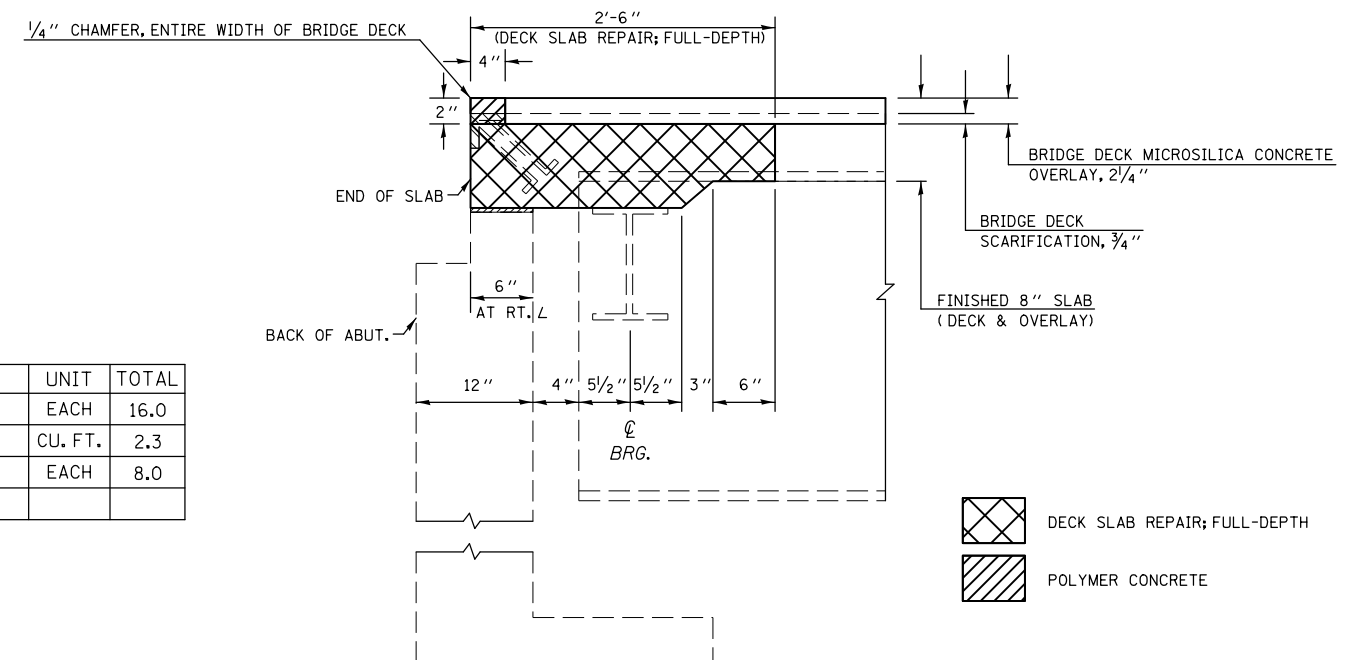
NOTE:
FOR EXISTING DECK DRAINS WITH EXTENSIONS, REMOVE THE BOTTOM PORTION OF EXISTING DRAIN. (COST INCLUDED WITH PLUG EXISTING DECK DRAINS)

SECTION AT PROPOSED JOINTS EAST ABUTMENT



 POLYMER CONCRETE

SECTION AT PROPOSED JOINTS WEST ABUTMENT



BILL OF MATERIALS

ITEM	UNIT	TOTAL
PLUG EXISTING DECK DRAINS	EACH	16.0
POLYMER CONCRETE	CU. FT.	2.3
DECK DRAIN EXTENSIONS	EACH	8.0

FILE NAME =	USER NAME = bucklesjj	DESIGNED -	REVISED -
et:\pwork\pwork\dot\bucklesjj\d0265817\0570924-sht-Details.dgn		DRAWN -	REVISED -
	PLOT SCALE = 40.0000' / in.	CHECKED -	REVISED -
	PLOT DATE = 10/5/2011	DATE -	REVISED -

STATE OF ILLINOIS
DEPARTMENT OF TRANSPORTATION

JOINT & DRAIN REPAIR DETAILS
S.N. 010-0103

SCALE: SHEET NO. OF SHEETS STA. TO STA.

F.A.I. RTE.	SECTION	COUNTY	TOTAL SHEETS	SHEET NO.
57	(10-33HB)BDR	Champaign	27	12
			CONTRACT NO. 70924	
ILLINOIS FED. AID PROJECT				