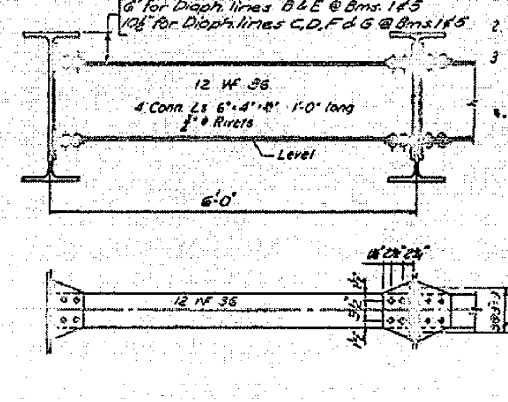
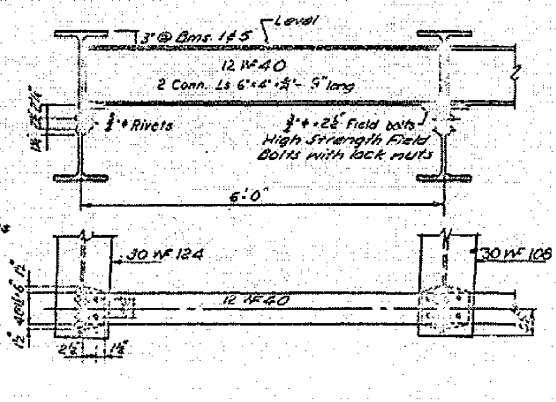
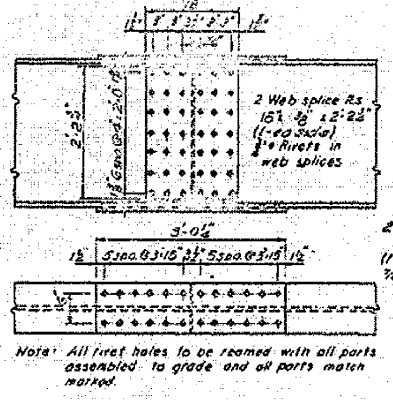
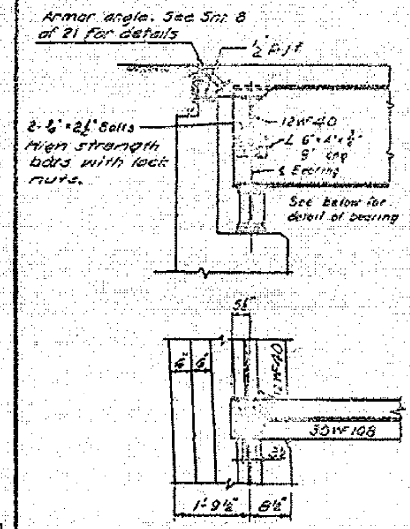


**FILL PLATES**

Beam	W. Abut	Piers 1 & 3	Pier 2	E. Abut
3	9'-3 1/2" x 1'-7"	9'-3 1/2" x 1'-7"	9'-3 1/2" x 1'-6"	9'-3 1/2" x 1'-7"

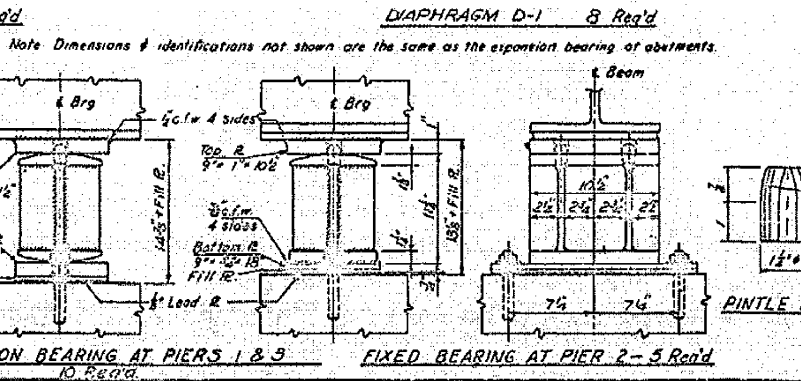
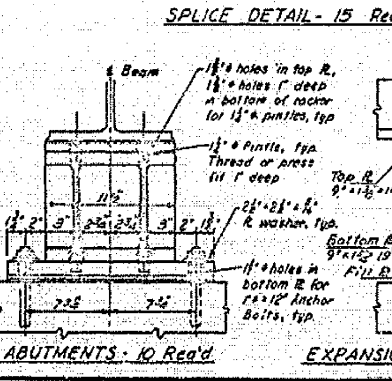
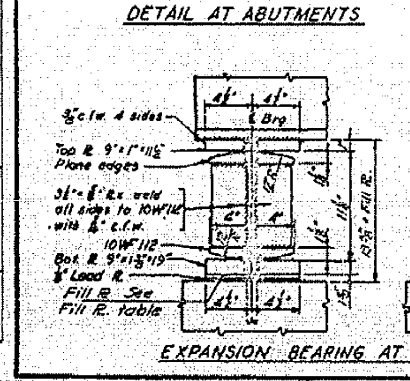
Note: No fill plates are required at other bearing locations.



- SPECIAL NOTES:**
- Beams are not to be cambered for dead load deflection but advantage of natural camber is to be taken.
  - Anchor bolts shall be set before riveting cross frames over piers and abutments. See Article 54.9 (1) for setting of masonry bearing plates and anchor bolts.
  - All rockers, bearing plates, lead plates, anchor bolts, pines and washers shall be seasoned, painted and set in accordance with Article 51.15 and are included for payment as Structural Steel.
  - High strength steel bolts may be substituted for field rivets in accordance with art. 54.9 (1) of the Standard Specifications.

**BILL OF MATERIAL**

Item	Unit	Quantity
Structural Steel in Girders	Lbs.	134,123
Structural Steel in Bearings	Lbs.	6,255
Structural Steel in Armor Angles	Lbs.	682
Structural Steel	Lbs.	141,060



**TOP OF BEAM ELEVATIONS FOR FABRICATION**

Beam	W. Abut	Pier 1	Splice 1	Splice 2	Pier 2	Splice 3	Pier 3	E. Abut
1	740.96	741.22	741.96	741.79	741.77	741.71	741.61	741.25
2	741.05	741.51	741.69	741.89	741.86	741.79	741.69	741.34
3	741.08	741.54	741.68	741.91	741.89	741.82	741.72	741.37
4	741.05	741.51	741.65	741.88	741.86	741.79	741.69	741.33
5	740.94	741.43	741.58	741.79	741.77	741.70	741.60	741.25

Note: Elevations are to top of rolled beam flange, including locations where splice plates or cover plates are present. Beams are assumed straight between splices before dead load deflection of structural steel. Dead load deflection is not included.

**STEEL FRAMING PLAN**  
F.A.I.R.T.E. 57 SEC. 10-33HD  
CHAMPAIGN COUNTY  
STA. 403+34.43