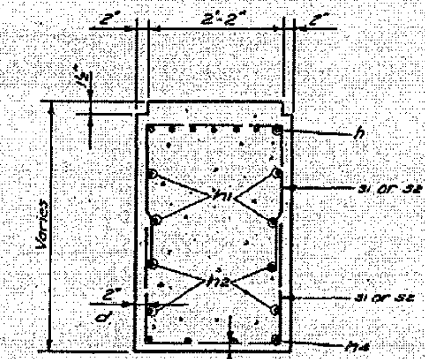
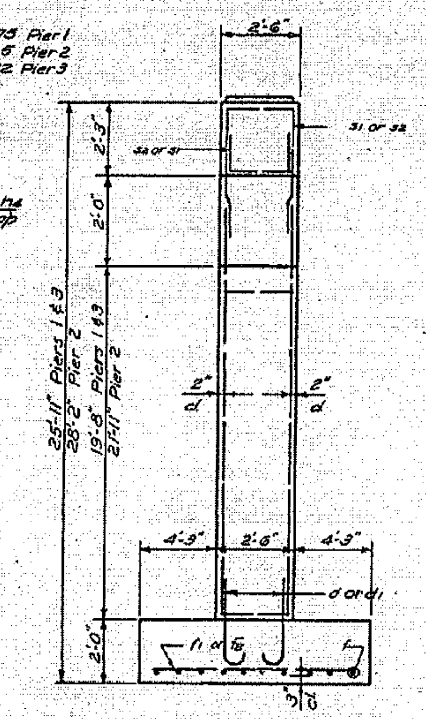
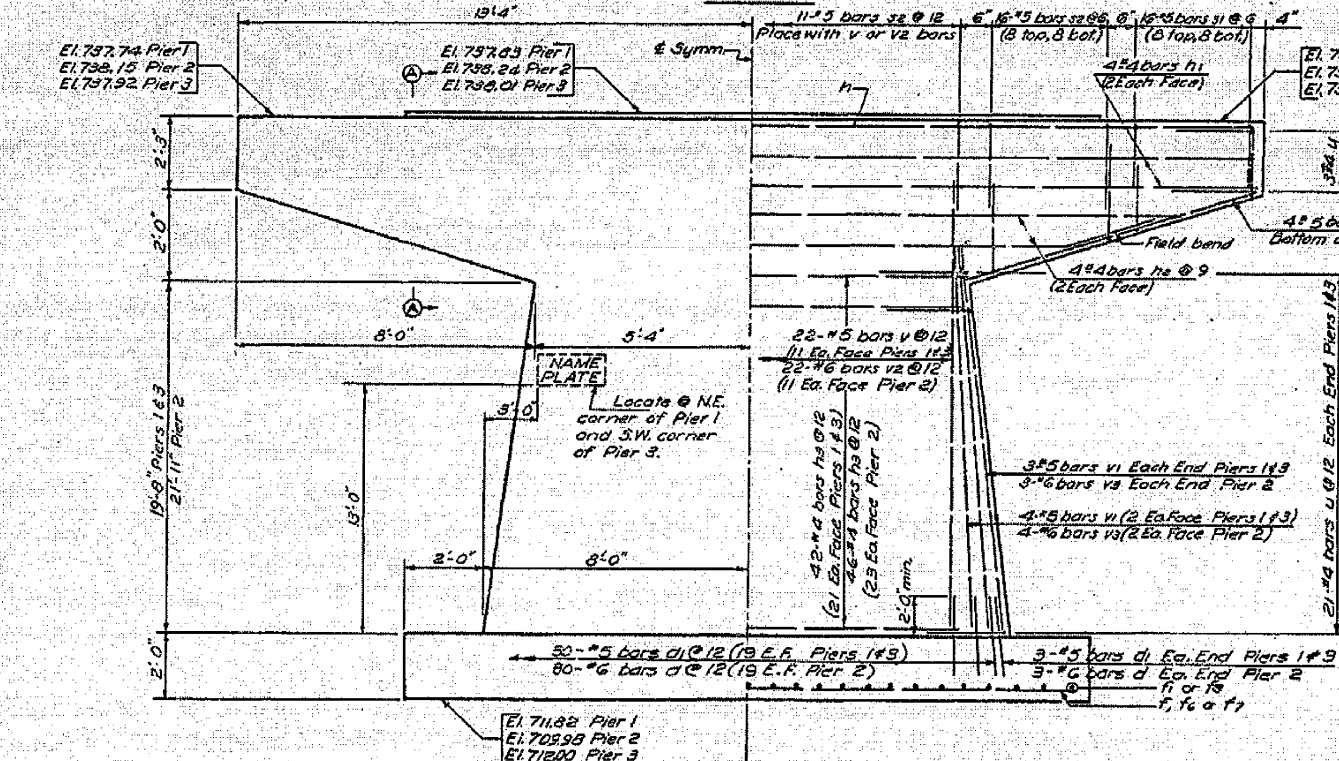


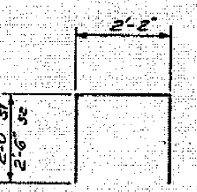
Note: See Sht. 7 for size and location of fill plates.



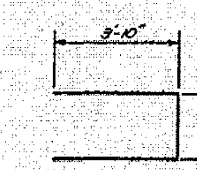
Note: All edges shall have standard 3/8" chamfers except footings.



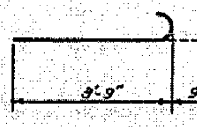
SECTION A-A



Bars h1 or h2



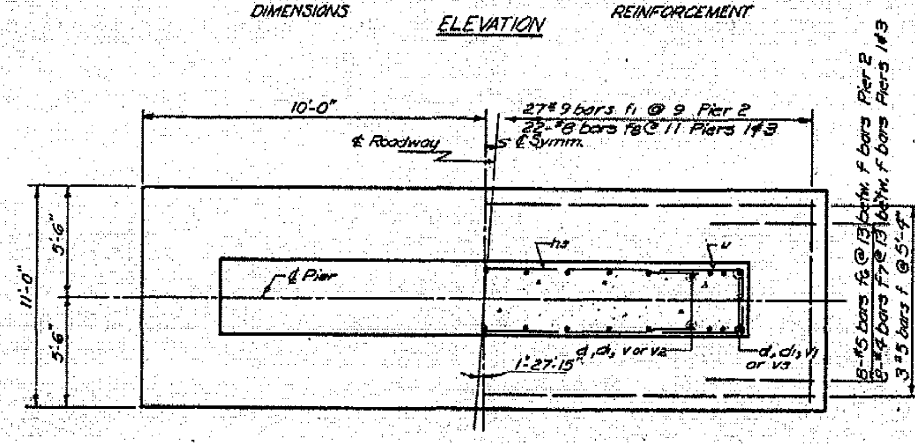
Bar u



Bar d & d1

PIERS 12 & 3
BILL OF MATERIAL

Bar	No	Size	Length	Shape
h	21	#11	26'-4"	□
h1	12	#4	26'-4"	□
h2	12	#4	22'-0"	□
h3	130	#4	10'-0"	□
h4	24	#5	6'-2"	□
v	44	#5	22'-0"	□
v1	88	#5	20'-8"	□
v2	22	#6	24'-7"	□
v3	14	#6	22'-11"	□
u	148	#4	9'-10"	□
d	30	#6	4'-6"	□
d1	72	#5	4'-6"	□
s1	96	#5	6'-2"	□
s2	129	#5	7'-2"	□
f	9	#5	19'-6"	□
f1	27	#5	10'-6"	□
f2	16	#5	5'-0"	□
f3	32	#4	5'-0"	□
f4	44	#8	10'-6"	□
Class 1 Concrete Cu Yds				1220
Reinforcement Bars				Lbs 13,002
Class A Excav for Structure Cu Yds				328
Name Plates				Each 2



Note: Design maximum soil pressure under pier footings = 4,000 p.s.f.

DESIGNED BY DATE CHECKED BY DATE IN CHARGE
 CBP 4-9-79 RWA 6-15-81 GYZ

PIERS
FAJ.RTE.57 SECIO-33HB
CHAMPAIGN COUNTY
STA.403+34.43

JOB NO. 384-V7