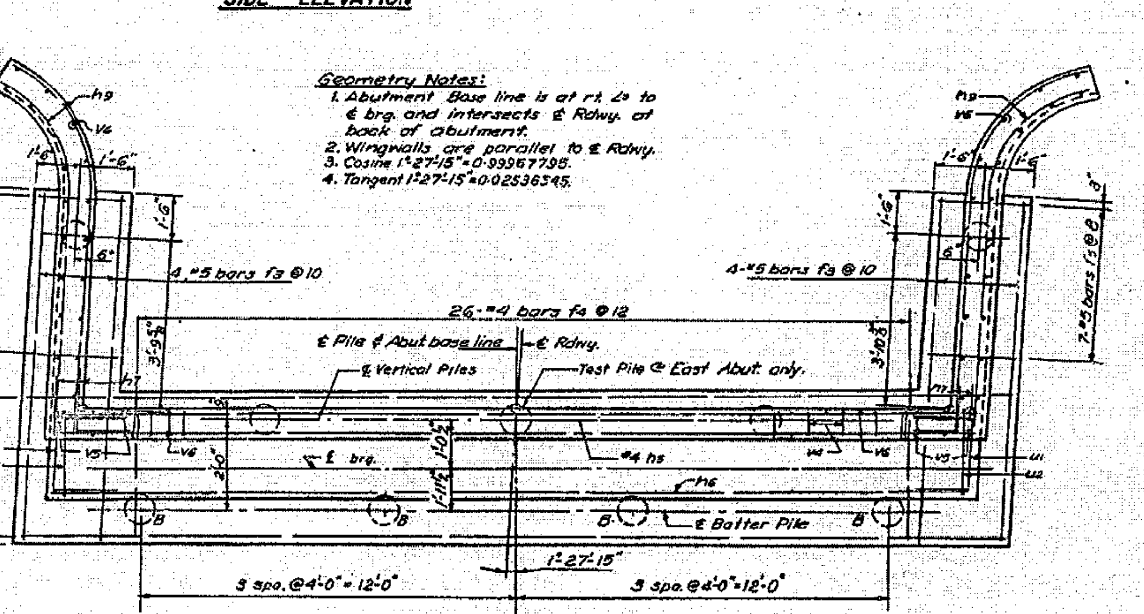
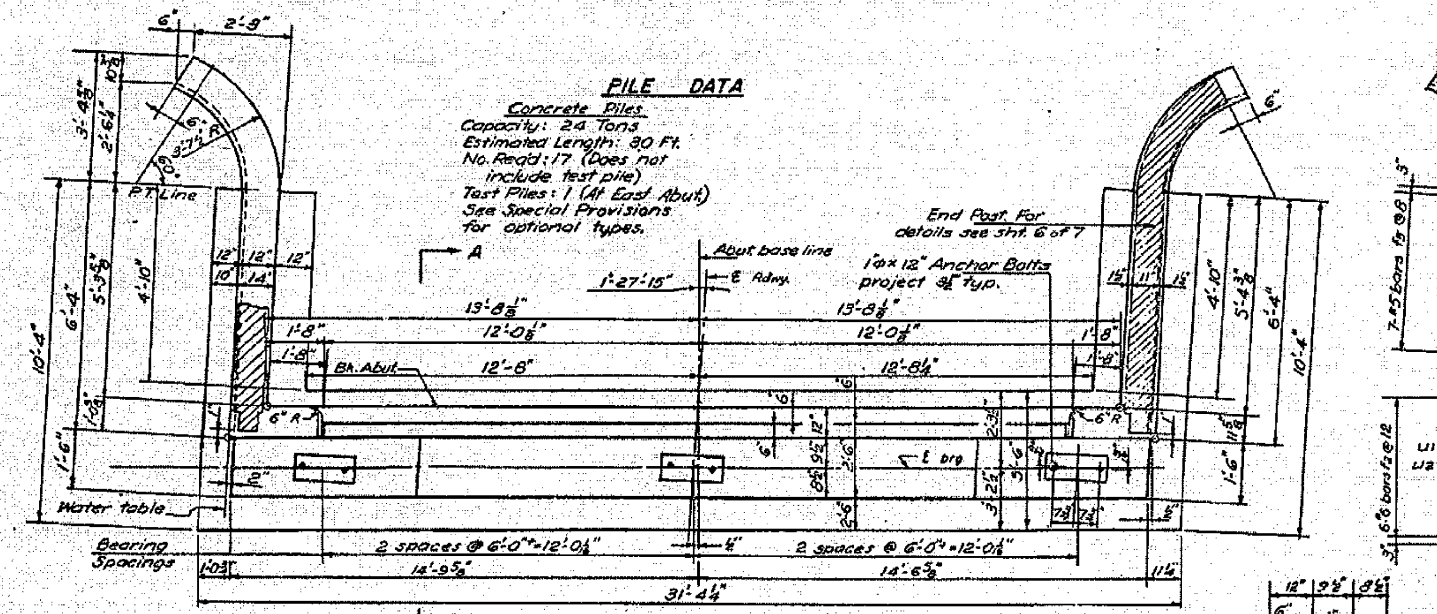
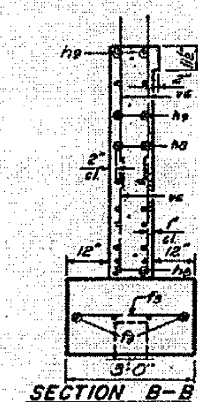
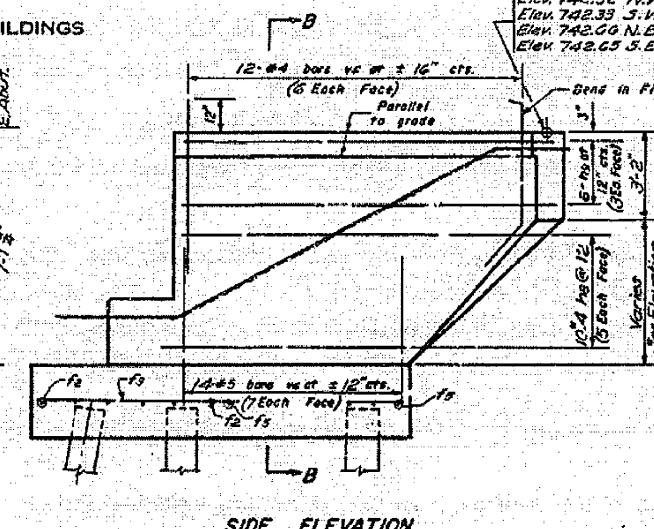
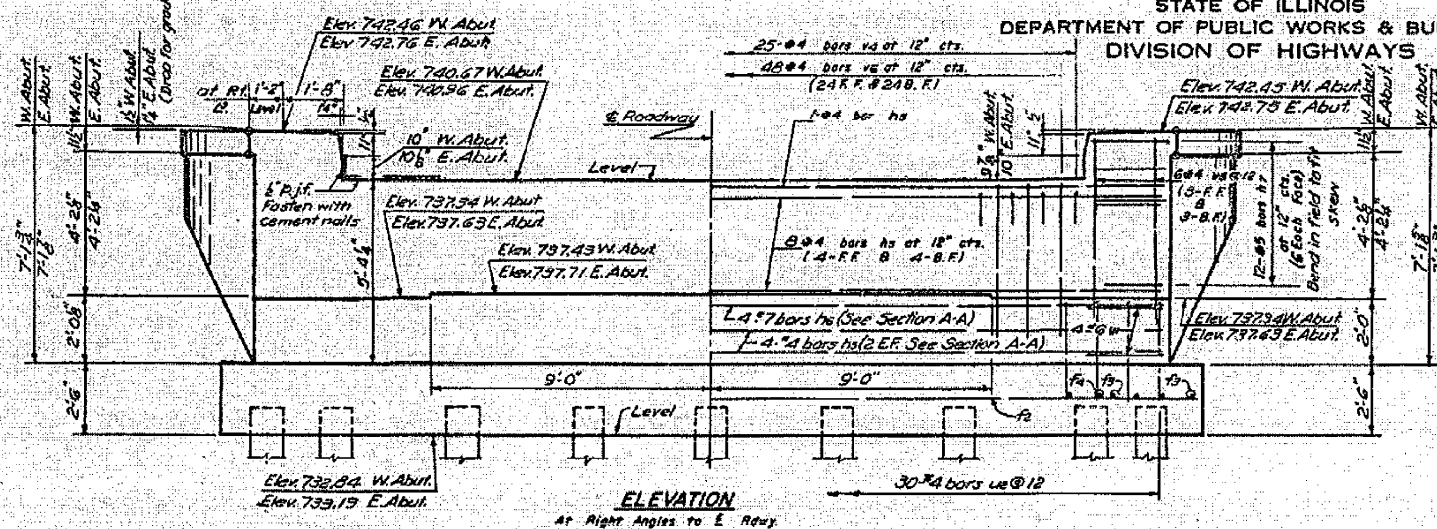


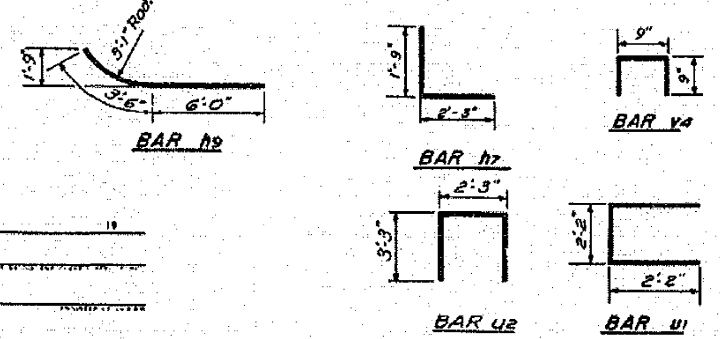
STATE OF ILLINOIS
DEPARTMENT OF PUBLIC WORKS & BUILDINGS
DIVISION OF HIGHWAYS

DATE	SECTION	COUNTY	SHEET NO.	TOTAL SHEETS
FAIR 57	10-33HB	CHAMPAIGN	19	10



FILE DATA
Concrete Piles
Capacity: 24 Tons
Estimated Length: 30 Ft.
No. Req'd: 17 (Does not include test pile)
Test Piles: 1 (At East Abut.)
See Special Provisions for optional types.

Geometry Notes:
1. Abutment Base line is at rt. to E. Rdwy. and intersects E. Rdwy. at back of abutment.
2. Wingwalls are parallel to E. Rdwy.
3. Cosine 1°27'15" = 0.99567795.
4. Tangent 1°27'15" = 0.02536345.



BILL OF REINFORCEMENT (2 Abut.)

Bar	No.	Size	Length	Shape	Bar	No.	Size	Length	Shape
h9	26	#4	29'-0"	—	f2	12	#6	31'-0"	—
h8	8	#7	29'-0"	—	f3	18	#5	10'-0"	—
h7	48	#3	4'-0"	L	f4	52	#4	5'-0"	—
h6	40	#4	6'-6"	—	f5	28	#5	2'-6"	—
h5	24	#5	9'-6"	—	u4	50	#4	2'-9"	□
					u5	24	#4	6'-2"	—
					u6	200	#8	4'-8"	—
u1	16	#6	6'-6"	□					
u2	60	#4	8'-9"	□					

BILL OF MATERIAL (2 ABUT.)

Item	Unit	Quantity
Class X Concrete	Cu. Yd.	61.2
Reinforcement Bars	Lb.	3667
Concrete Piles	Lb. Ft.	510
Test Piles (Concrete)	Each	1

DESIGNED CBP
CHECKED RHA
DRAWN CBP 6-15-59
CHECKED RHA 8-23-59

ABUTMENTS
FAIRTE 57 SEC. 10-33HB
CHAMPAIGN COUNTY
STA. 403+34.43

A-3 Drawn 5-21-58 Rev. 9-26-58

LOG NO. 394-V7